

ARG30331 NLRP3 Inflammasome Antibody Panel

Package: 1 kit
Store at: -20°C

Component

Cat. No.	Component Name	Host clonality	Reactivity	Application	Package
ARG40539	anti-NALP3 / Cryopyrin antibody	Rabbit pAb	Hu, Ms, Rat	ICC/IF, IHC-P, WB	20 µl
ARG66211	anti-ASC / TMS1 antibody	Rabbit pAb	Hu, Ms	WB	20 µl
ARG57293	anti-Caspase 1 antibody	Rabbit pAb	Hu, Ms	ICC/IF, IHC-P, IP, WB	20 µl
ARG10112	anti-GAPDH antibody [6C5]	Mouse mAb	AGMK, Bb, Cat, Chk, Dog, Fsh, Hm, Hu, Mk, Ms, Pig, Rb, Rat, Xenopus laevis, Zfsh	ELISA, ICC/IF, IHC-Fr, WB	20 µg

Summary

Product Description NLRP3 Inflammasome Antibody Panel is an all-in-one solution to make the research of NLRP3 inflammasome easy and economic. This antibody panel comprises antibodies against the key components of NLRP3 inflammasome including NLRP3, ASC, and Caspase-1. Moreover, a loading control antibody against GAPDH is also included. This panel is the best solution for studying NLRP3 Inflammasome.

Related news:

[Inflammasome & Pyroptosis Antibody Panels are released](#)

[Exploring Antiviral Immune Response](#)

[RIP1 activation and pathogenesis of NASH](#)

[AMPK signaling regulates NLRP3 inflammation and pyroptosis](#)

Target Name NLRP3 Inflammasome

Alternate Names NLRP3 Inflammasome antibody; GAPDH antibody; NALP3 / Cryopyrin antibody; Caspase 1 antibody; ASC / TMS1 antibody

Properties

Storage instruction For continuous use, store undiluted antibody at 2-8°C for up to a week. For long-term storage, aliquot and store at -20°C or below. Storage in frost free freezers is not recommended. Avoid repeated freeze/thaw cycles. Suggest spin the vial prior to opening. The antibody solution should be gently mixed before use.

Note For laboratory research only, not for drug, diagnostic or other use.

Bioinformation

Gene Full Name Antibody Panel for NLRP3 Inflammasome

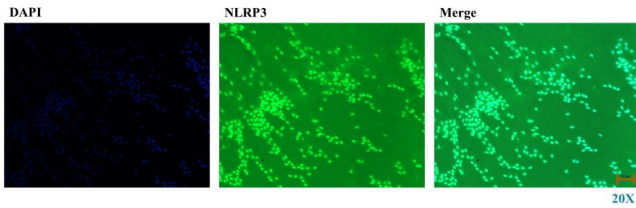
Highlight Related Product:
[anti-NALP3 / Cryopyrin antibody](#)

[anti-ASC / TMS1 antibody:](#)

[anti-Caspase 1 antibody:](#)

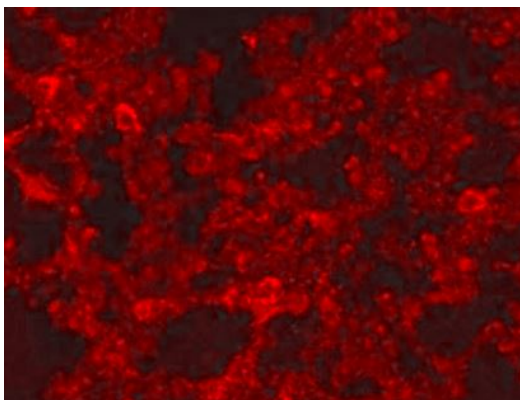
[anti-GAPDH antibody:](#)

Images



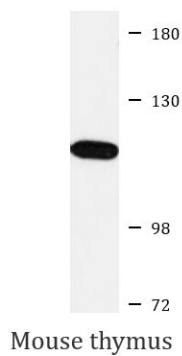
ARG40539 anti-NALP3 / Cryopyrin antibody ICC/IF image
(Customer's Feedback)

Immunofluorescence: Human conjunctiva stained with ARG40539 anti-NALP3 / Cryopyrin antibody at 1:200 dilution and [ARG54745](#) Goat anti-Rabbit IgG (H+L) antibody (FITC) at 1:500 dilution.



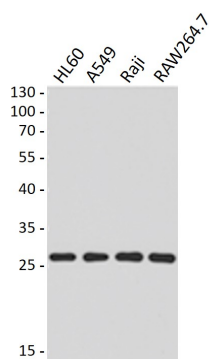
ARG40539 anti-NALP3 / Cryopyrin antibody IHC-P image

Immunohistochemistry: Paraffin-embedded Mouse lung stained with ARG40539 anti-NALP3 / Cryopyrin antibody at 1:100 dilution.



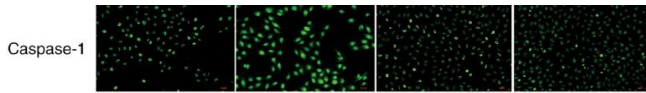
ARG40539 anti-NALP3 / Cryopyrin antibody WB image

Western blot: 25 µg of Mouse thymus lysate stained with ARG40539 anti-NALP3 / Cryopyrin antibody at 1:1000 dilution.



ARG66211 anti-ASC / TMS1 antibody WB image

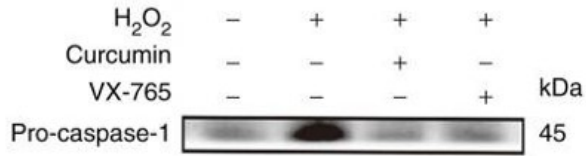
Western blot: 40 µg of HL60, A549, Raji and RAW264.7 cell lysates stained with ARG66211 anti-ASC / TMS1 antibody at 1:500 dilution.



ARG57293 anti-Caspase 1 antibody ICC/IF image

Immunofluorescence: HUVECs stained with ARG57293 anti-Caspase 1 antibody.

From Yuan Y et al. Mol Med Rep (2022), [doi: 10.3892/mmr.2022.12730](https://doi.org/10.3892/mmr.2022.12730), Fig. 3B.



ARG57293 anti-Caspase 1 antibody WB image

Western blot: HUVECs stained with ARG57293 anti-Caspase 1 antibody at 1:1000 dilution.

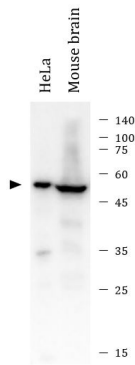
From Yulin Yuan et al. Mol Med Rep. (2022), [doi: 10.3892/mmr.2022.12730](https://doi.org/10.3892/mmr.2022.12730), Fig. 3.(A).



ARG57293 anti-Caspase 1 antibody WB image

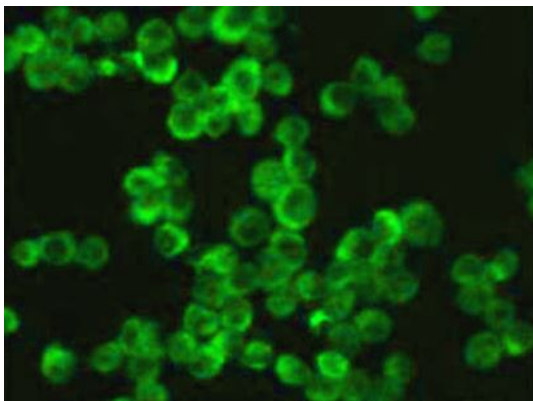
Western blot: Mouse liver stained with ARG57293 anti-Caspase 1 antibody.

From Zhao Y et al. Preprint- (2021), [doi: 10.1038/s41598-021-00071-6](https://doi.org/10.1038/s41598-021-00071-6), Fig. 4F.



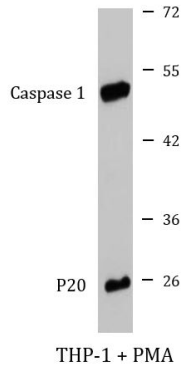
ARG57293 anti-Caspase 1 antibody WB image

Western blot: 10 µg of HeLa and 20 µg of Mouse brain lysates stained with ARG57293 anti-Caspase 1 antibody at 1:1000 dilution.



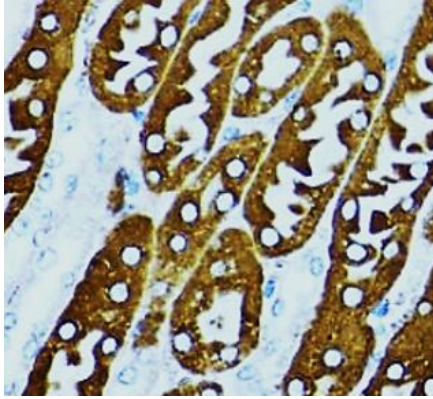
ARG57293 anti-Caspase 1 antibody ICC/IF image

Immunofluorescence: Raw264.7 cells stained with ARG57293 anti-Caspase 1 antibody at 1:100 dilution.



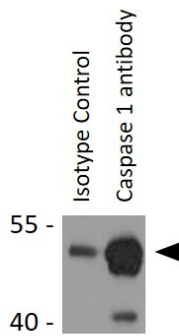
ARG57293 anti-Caspase 1 antibody WB image

Western blot: 25 µg of cell lysate from PMA treated THP-1 cells were stained with ARG57293 anti-Caspase 1 antibody at 1:1000 dilution.



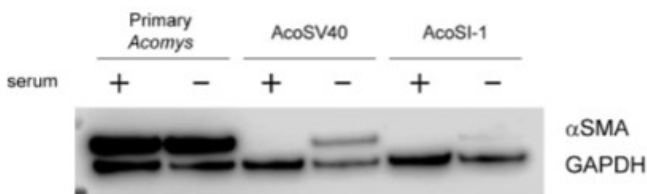
ARG57293 anti-Caspase 1 antibody IHC-P image

Immunohistochemistry: Paraffin-embedded Mouse kidney tissue stained with ARG57293 anti-Caspase 1 antibody at 1:100 dilution.



ARG57293 anti-Caspase 1 antibody IP image

Immunoprecipitation: 200 µg extracts of THP-1 cells immunoprecipitated and stained with ARG57293 anti-Caspase 1 antibody at 1:1000 dilution.



ARG10112 anti-GAPDH antibody [6C5] WB image

Western blot: pAFs, AcoSV40, and AcoSI-1 stained with ARG10112 anti-GAPDH antibody [6C5] at 1:5000 dilution.

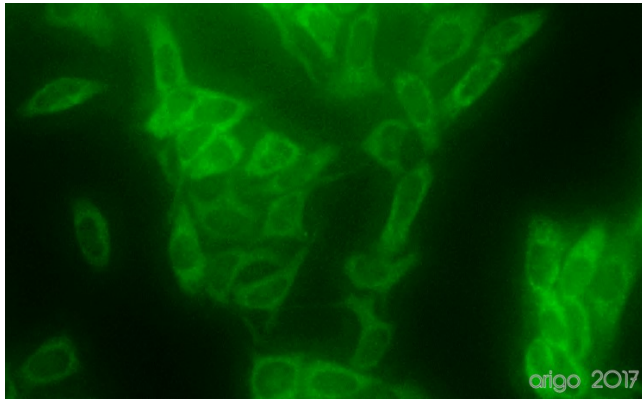
From Michele N Dill et al. PLoS One. (2023), [doi: 10.3389/fcell.2022.899869](https://doi.org/10.3389/fcell.2022.899869), Fig. 2. C.



ARG10112 anti-GAPDH antibody [6C5] WB image

Western blot: Porcine kidney stained with ARG10112 anti-GAPDH antibody [6C5].

From Gianni Huang et al. Front Cell Dev Biol (2022), [doi: 10.3389/fcell.2022.899869](https://doi.org/10.3389/fcell.2022.899869), Fig. 2. E.



ARG10112 anti-GAPDH antibody [6C5] ICC/IF image

Immunofluorescence: 100% Methanol fixed (RT, 10 min) HeLa cells stained with ARG10112 anti-GAPDH antibody [6C5] (green) at 1:200 dilution.

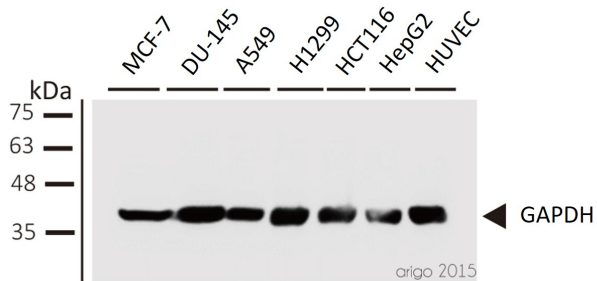
Secondary antibody: [ARG55393](https://arigo.bio/antibodies/ARG55393) Goat anti-Mouse IgG (H+L) antibody (FITC)



ARG10112 anti-GAPDH antibody [6C5] WB image

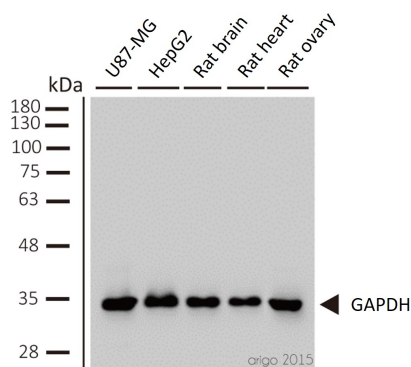
Western blot: Mouse samples stained with ARG10112 anti-GAPDH antibody [6C5] at 1:1000 dilution.

From Yun-Yun Li et al. Int J Biol Sci (2022), [doi: 10.7150/ijbs.68224](https://doi.org/10.7150/ijbs.68224), Fig. 5. C.



ARG10112 anti-GAPDH antibody [6C5] WB image

Western blot: 1) MCF-7 2) DU-145 3) A549 4) H1299 5) HCT116 6) HepG2 7) HUVEC stained with ARG10112 anti-GAPDH antibody [6C5] at 1:1000 dilution.



ARG10112 anti-GAPDH antibody [6C5] WB image

Western blot: 1) U87-MG 2) HepG2 3) rat brain 4) rat heart 5) rat ovary stained with ARG10112 anti-GAPDH antibody [6C5] at 1:2000 dilution.

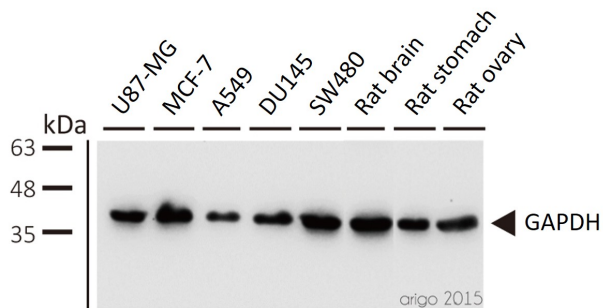
GAPDH



ARG10112 anti-GAPDH antibody [6C5] WB image

Western blot: HUVEC stained with ARG10112 anti-GAPDH antibody [6C5].

From Bingzheng Lu et al. *Oxid Med Cell Longev* (2020), [doi: 10.1155/2020/2048210](https://doi.org/10.1155/2020/2048210), Fig. 5. B.



ARG10112 anti-GAPDH antibody [6C5] WB image

Western blot: 1) U87-MG 2) MCF-7 3) A549 4) DU145 5) SW480 6) rat brain 7) rat stomach 8) rat ovary stained with ARG10112 anti-GAPDH antibody [6C5] at 1:5000 dilution.