

ARG30321 Autophagy Antibody Panel

Package: 1 kit
Store at: -20°C

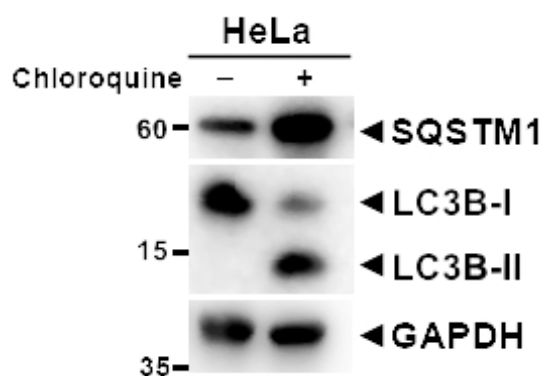
Component

Cat. No.	Component Name	Host clonality	Reactivity	Application	Package
ARG55799	anti-LC3B antibody	Rabbit pAb	Hu, Ms, Rat	ICC/IF, IHC-P, WB	20 µl
ARG55040	anti-SQSTM1 / p62 antibody	Rabbit pAb	Hu, Ms, Rat	ICC/IF, IHC-P, WB	20 µl
ARG58688	anti-Beclin 1 antibody	Rabbit pAb	Hu, Ms, Rat	ICC/IF, IHC-P, WB	20 µl
ARG66330	anti-GAPDH antibody [SQab1878]	Rabbit mAb	Hu, Ms, Rat, AGMK, Bov, Chk, Pig, Xenopus laevis, Zfsh	FACS, ICC/IF, IHC-P, IP, WB	20 µl
ARG65351	Goat anti-Rabbit IgG antibody (HRP)	Goat pAb	Rb	ELISA, IHC-P, WB	50 µl

Summary

Product Description

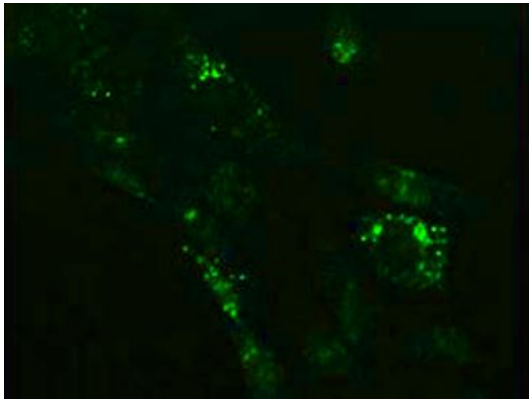
Images



ARG55799 anti-LC3B antibody WB image (Customer's Feedback)

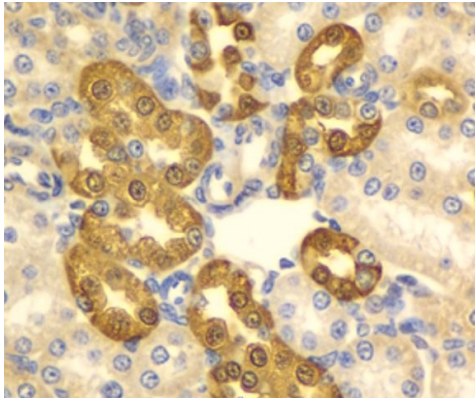
Western blot: HeLa cells untreated or treated with Chloroquine. 20 µg of cell lysates stained with [ARG55040](#) anti-SQSTM1 / p62 antibody and ARG55799 anti-LC3B antibody at 1:1000 dilution.

An anti-GAPDH antibody used as a positive control.



ARG55799 anti-LC3B antibody ICC/IF image

Immunofluorescence: NIH/3T3 cells treated with Chloroquine (50 μ M, 37°C for 20 hours). Cells were stained with ARG55799 anti-LC3B antibody at 1:100 dilution.



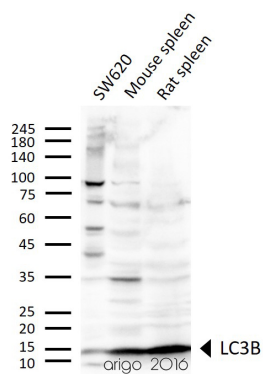
ARG55799 anti-LC3B antibody IHC-P image

Immunohistochemistry: Paraffin-embedded Rat kidney stained with ARG55799 anti-LC3B antibody at 1:100 dilution.



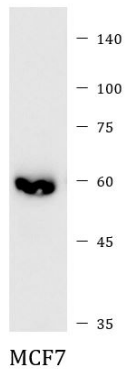
ARG55799 anti-LC3B antibody WB image

Western blot: 30 μ g of HeLa untreated or treated with Chloroquine at 50 μ M, 100 μ M (18 hr). The bolts stained with ARG55799 anti-LC3B antibody at 1:1000 dilution.



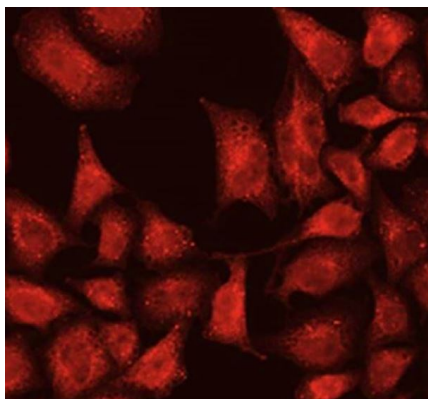
ARG55799 anti-LC3B antibody WB image

Western blot: 30 μ g of SW620, Mouse spleen, and Rat spleen lysates stained with ARG55799 anti-LC3B antibody at 1:1000 dilution.



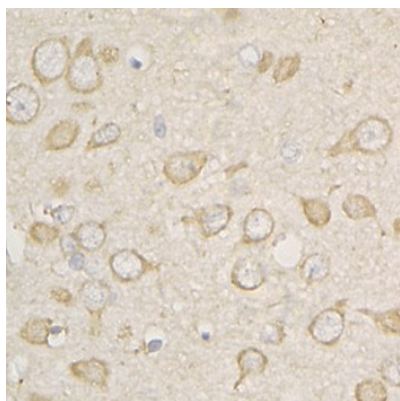
ARG55040 anti-SQSTM1 / p62 antibody WB image

Western blot: 20 µg of MCF7 cell lysate stained with ARG55040 anti-SQSTM1 / p62 antibody at 1:1000 dilution.



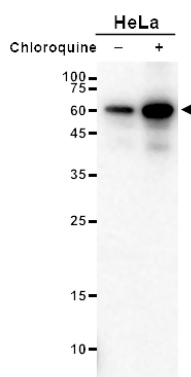
ARG55040 anti-SQSTM1 / p62 antibody ICC/IF image

Immunofluorescence: U2OS cells stained with ARG55040 anti-SQSTM1 / p62 antibody at 1:100 dilution.



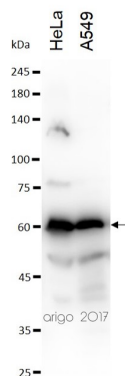
ARG55040 anti-SQSTM1 / p62 antibody IHC-P image

Immunohistochemistry: Paraffin-embedded Rat brain stained with ARG55040 anti-SQSTM1 / p62 antibody at 1:100 dilution.



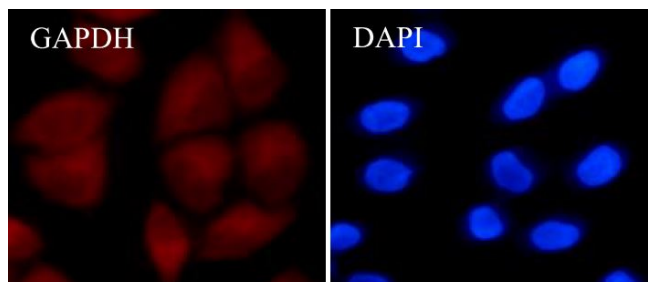
ARG55040 anti-SQSTM1 / p62 antibody WB image

Western blot: HeLa cells untreated or treated with Chloroquine. 20 µg of cell lysates stained with ARG55040 anti-SQSTM1 / p62 antibody at 1:1000 dilution.



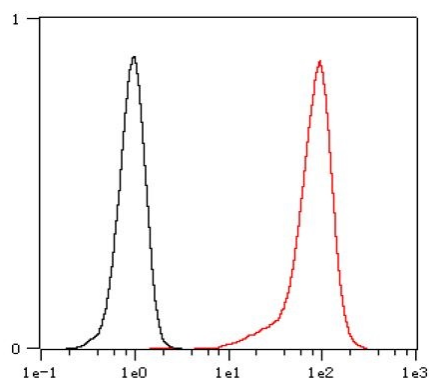
ARG55040 anti-SQSTM1 / p62 antibody WB image

Western blot: 30 µg of HeLa and A549 cell lysates stained with ARG55040 anti-SQSTM1 / p62 antibody at 1:500 dilution.



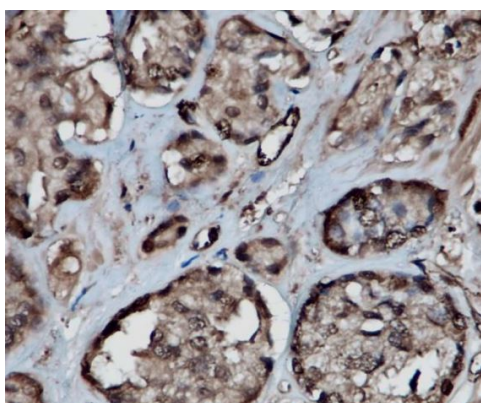
ARG66330 anti-GAPDH antibody [SQab1878] ICC/IF image

Immunofluorescence: HeLa cells were fixed with 4% paraformaldehyde for 30 min at RT, permeabilized with 0.1% Triton X-100 for 10 min at RT then blocked with 10% goat serum for 30 min at RT. Cells were stained with ARG66330 anti-GAPDH antibody [SQab1878] (red) at 4°C. DAPI (blue) was used as the nuclear counter stain.



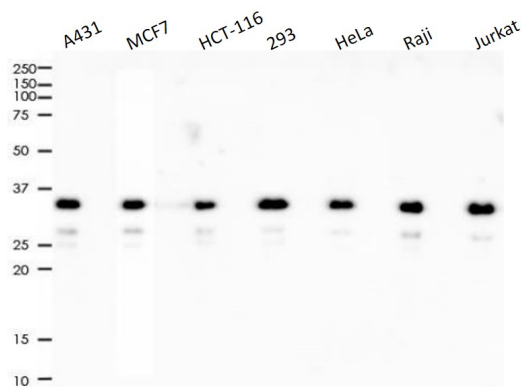
ARG66330 anti-GAPDH antibody [SQab1878] FACS image

Flow Cytometry: HeLa cells were fixed with 4% paraformaldehyde (10 min) and then permeabilized with 0.1% TritonX-100 for 15 min. The were stained with ARG66330 anti-GAPDH antibody [SQab1878] (red) in 1x PBS/1% BSA for 30 min at RT, followed by Alexa Fluor® 488 labelled secondary antibody. Unlabelled sample (black) was used as a control. .



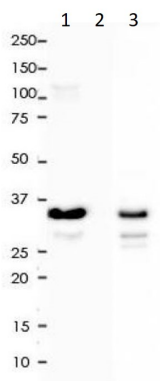
ARG66330 anti-GAPDH antibody [SQab1878] IHC-P image

Immunohistochemistry: Formalin-fixed and paraffin-embedded prostate cancer tissue stained with ARG66330 anti-GAPDH antibody [SQab1878]. Antigen Retrieval: Heat mediated was performed using Tris/EDTA buffer pH 9.0.



ARG66330 anti-GAPDH antibody [SQab1878] WB image

Western blot: 2 µg of A431, MCF7, HCT-116, 293, HeLa, Raji and Jurkat cell lysates stained with ARG66330 anti-GAPDH antibody [SQab1878].



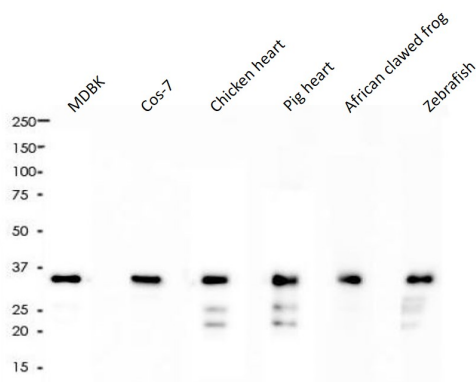
ARG66330 anti-GAPDH antibody [SQab1878] IP image

Immunoprecipitation: 0.1 mg of HeLa whole cell lysate immunoprecipitated and stained with ARG66330 anti-GAPDH antibody [SQab1878]. 1) ARG66330 IP in HeLa whole cell lysate, 2) PBS instead of ARG66330 in HeLa whole cell lysate, and 3) HeLa whole cell lysate, 2 µg (input).



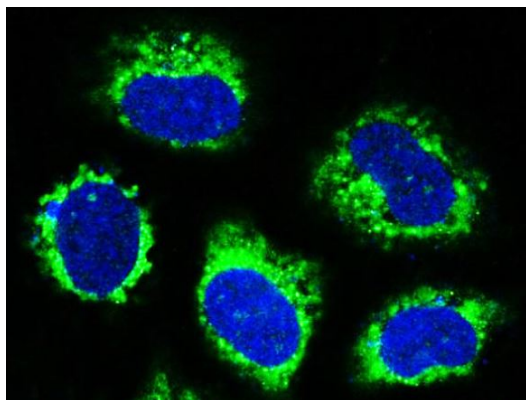
ARG66330 anti-GAPDH antibody [SQab1878] WB image

Western blot: 2 µg of Mouse brain, Mouse heart, Mouse kidney, Mouse liver, Rat brain, Rat heart, Rat kidney and Rat liver lysates stained with ARG66330 anti-GAPDH antibody [SQab1878].



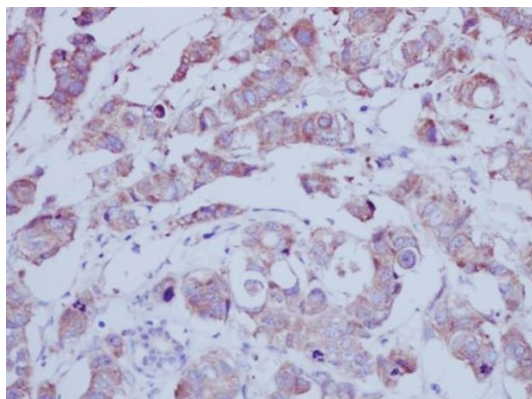
ARG66330 anti-GAPDH antibody [SQab1878] WB image

Western blot: 2 µg of MDBK, Cos-7, Chicken heart, Pig heart, African clawed frog and Zebrafish lysates stained with ARG66330 anti-GAPDH antibody [SQab1878].



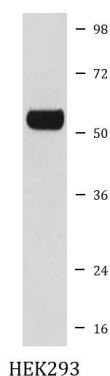
ARG58688 anti-Beclin 1 antibody ICC/IF image

Immunofluorescence: HeLa cells stained with ARG58688 anti-Beclin 1 antibody (green). Nuclear staining (blue).



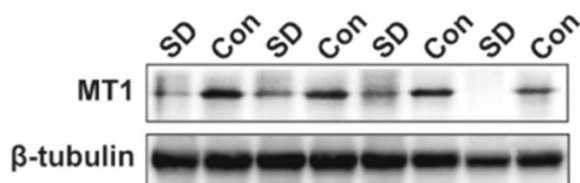
ARG58688 anti-Beclin 1 antibody IHC-P image

Immunohistochemistry: Paraffin-embedded Human breast cancer tissue stained with ARG58688 anti-Beclin 1 antibody.



ARG58688 anti-Beclin 1 antibody WB image

Western blot: HEK293 cell lysate stained with ARG58688 anti-Beclin 1 antibody.

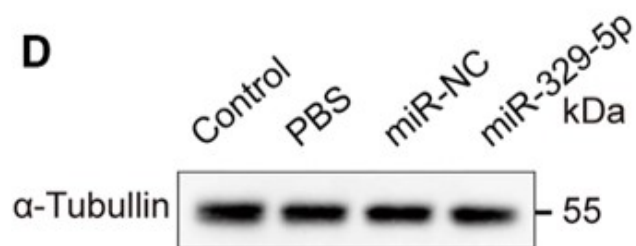


ARG65351 Goat anti-Rabbit IgG antibody (HRP) WB image

Western blot: Rat placental stained with [ARG57589 anti-MTNR1A antibody](#) at 1:1000 dilution, ARG65351 Goat anti-Rabbit IgG antibody (HRP) at 1:5000 dilution.

From Jinzhi Li et al. J Reprod Immunol. (2023), [doi: 10.1016/j.jri.2023.104166](#), Fig. 2.B.

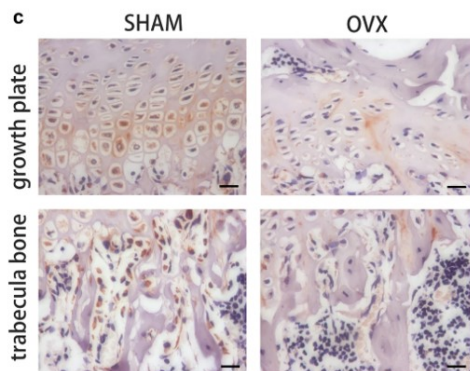
D



ARG65351 Goat anti-Rabbit IgG antibody (HRP) WB image

Western blot: Mouse retina stained with [ARG65693 anti-alpha Tubulin antibody](#) and ARG65351 Goat anti-Rabbit IgG antibody (HRP)

From Xiaoyuan Ye et al. Mol Ther Nucleic Acids. (2024), [doi: 10.1016/j.omtn.2024.102209](#), Fig. 5.D.



ARG65351 Goat anti-Rabbit IgG antibody (HRP) IHC-P image

From Yu-Qian Song et al. J Mol Med (Berl) (2022), [doi: 10.1007/s00109-021-02165-0](#), Fig. 5.c.