

ARG30293 Smooth Muscle Marker

Package: 1 pair
Store at: -20°C

Component

Cat. No.	Component Name	Host clonality	Reactivity	Application	Package
ARG63416	anti-SM22 alpha / Transgelin antibody	Goat pAb	Hu	IHC-P, WB	50 µg
ARG52485	anti-alpha smooth muscle Actin antibody [1A4]	Mouse mAb	Hu, Ms, Pig, Rb, Rat, Sheep	ELISA, ICC/IF, IHC-P, IHC-Fr, WB	50 µl

Summary

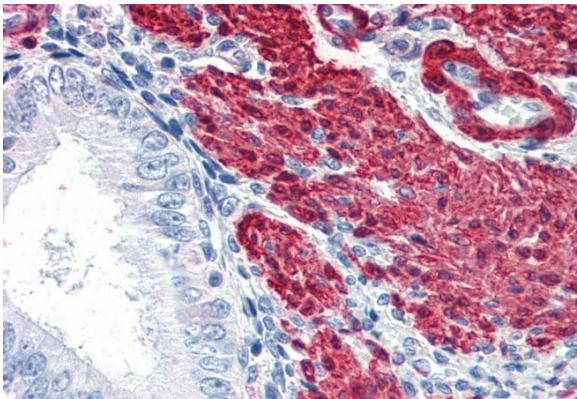
Target Name	Smooth Muscle Marker
Alternate Names	Smooth Muscle Marker; alpha smooth muscle Actin antibody; SM22 alpha / Transgelin antibody

Properties

Storage instruction	For continuous use, store undiluted antibody at 2-8°C for up to a week. For long-term storage, aliquot and store at -20°C or below. Storage in frost free freezers is not recommended. Avoid repeated freeze/thaw cycles. Suggest spin the vial prior to opening. The antibody solution should be gently mixed before use.
Note	For laboratory research only, not for drug, diagnostic or other use.

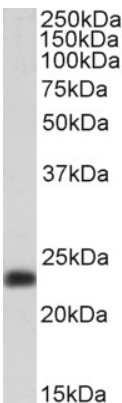
Bioinformation

Gene Full Name	Smooth Muscle Marker
Highlight	Related Product: anti-SM22 alpha / Transgelin antibody; anti-alpha smooth muscle Actin antibody;



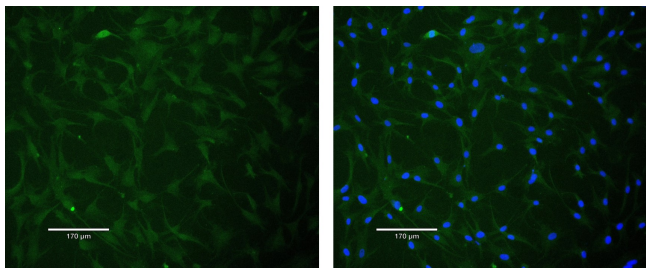
ARG63416 anti-SM22 alpha / Transgelin antibody IHC-P image

Immunohistochemistry: Paraffin-embedded Human uterus tissue. Antigen Retrieval: Steam tissue section in Citrate buffer (pH 6.0). The tissue section was stained with ARG63416 anti-SM22 alpha / Transgelin antibody at 5 µg/ml dilution followed by AP-staining.



ARG63416 anti-SM22 alpha / Transgelin antibody WB image

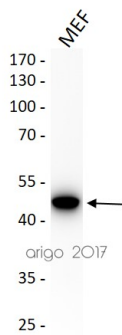
Western blot: 35 µg of Human testis lysate (in RIPA buffer) stained with ARG63416 anti-SM22 alpha / Transgelin antibody at 0.3 µg/ml dilution and incubated at RT for 1 hour.



ARG52485 anti-alpha smooth muscle Actin antibody [1A4] ICC/IF image

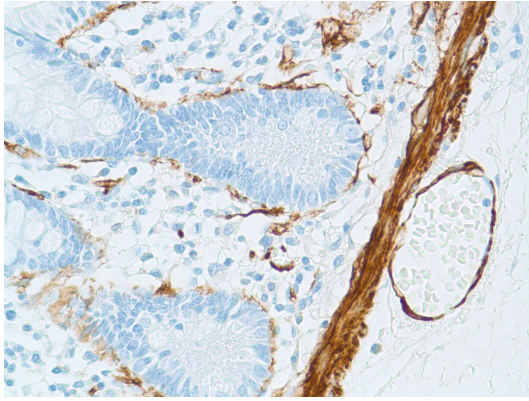
Immunofluorescence: Rabbit skeletal muscle stained with ARG52485 anti-alpha smooth muscle Actin antibody [1A4] at 1:100 dilution.

Secondary antibody: [ARG23757 Goat anti-Mouse IgG \(H+L\) antibody \(FITC\), pre-adsorbed](#)



ARG52485 anti-alpha smooth muscle Actin antibody [1A4] WB image

Western blot: 30 µg of MEF cell lysate stained with anti-alpha smooth muscle Actin antibody [1A4] at 1:200 dilution.



ARG52485 anti-Actin-Smooth Muscle antibody [1A4] IHC-P image

Immunohistochemistry: Human Small Intestine stained with Actin-Smooth Muscle antibody [1A4] (ARG52485)