

ARG30274 SOD1 and SOD2 Antibody Duo

Package: 1 pair
Store at: -20°C

Component

Cat. No.	Component Name	Host clonality	Reactivity	Application	Package
ARG64241	anti-SOD1 antibody	Goat pAb	Hu, Ms	ICC/IF, WB	50 µg
ARG54937	anti-SOD2 antibody	Rabbit pAb	Hu, Ms, Rat	ICC/IF, IHC-P, WB	50 µl

Summary

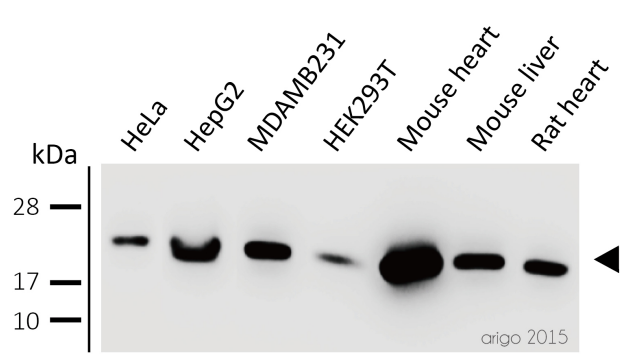
Product Description	<p>Superoxide Dismutases (SODs, including SOD1 and SOD2) are enzymes that alternately catalyzes the dismutation of superoxide radicals into less damaging molecular oxygen or hydrogen peroxide. The overproduction of superoxide radicals can cause severe tissue and cell damages. SOD enzymes deal with the superoxide radical by alternately adding or removing an electron from the superoxide molecules it encounters, thus changing the O₂⁻ into one of two less damaging species: either molecular oxygen (O₂) or hydrogen peroxide (H₂O₂). SOD1 and SOD2 became the most important antioxidant defense systems in almost all living things exposed to oxygen.</p> <p>Fukui and Bao. 2010. Free Rad Biol and Med 6: 821-830 Nojima et al. 2015. Plos One 25(10)</p>
Target Name	SOD1 and SOD2
Alternate Names	SOD1 and SOD2 antibody; Superoxide dismutase 1 and Superoxide dismutase 2 antibody; SOD2 antibody; SOD1 antibody

Properties

Storage instruction	For continuous use, store undiluted antibody at 2-8°C for up to a week. For long-term storage, aliquot and store at -20°C or below. Storage in frost free freezers is not recommended. Avoid repeated freeze/thaw cycles. Suggest spin the vial prior to opening. The antibody solution should be gently mixed before use.
Note	For laboratory research only, not for drug, diagnostic or other use.

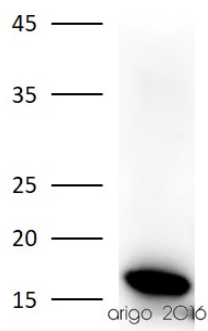
Bioinformation

Gene Full Name	Superoxide dismutase 1 (SOD1) and Superoxide dismutase 2 (SOD2) Antibody Duo
Highlight	<p>Related Product:</p> <p>anti-SOD1 antibody;</p> <p>anti-SOD2 antibody;</p>



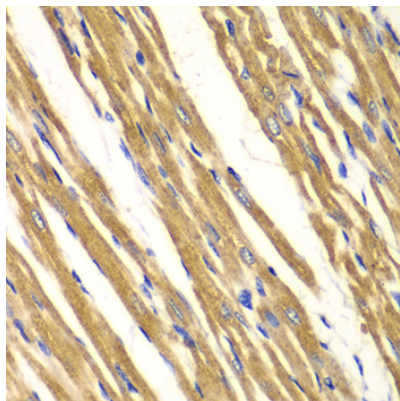
ARG54937 anti-SOD2 antibody WB image

Western blot: 30 µg of HeLa, HepG2, MDAMB231, HEK293T, Mouse heart, Mouse liver, and Rat heart lysates stained with ARG54937 anti-SOD2 antibody at 1:500 dilution.



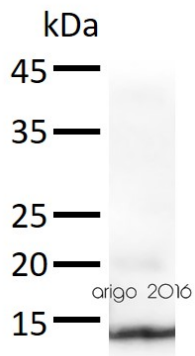
ARG64241 anti-SOD1 antibody WB image

Western blot: 30 µg of HeLa cell lysate stained with ARG64241 anti-SOD1 antibody at 1:2000 dilution.



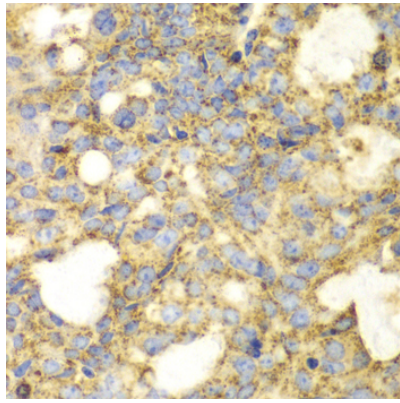
ARG54937 anti-SOD2 antibody IHC-P image

Immunohistochemistry: paraffin-embedded Rat heart stained with ARG54937 anti-SOD2 antibody at 1:100 dilution (400x lens).



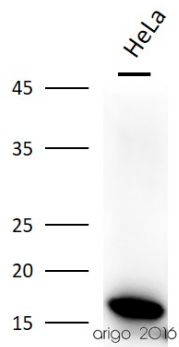
ARG64241 anti-SOD1 antibody WB image

Western blot: 30 µg of Mouse brain lysate stained with ARG64241 anti-SOD1 antibody at 1:2000 dilution.



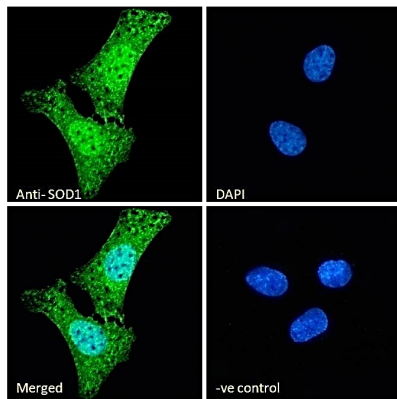
ARG54937 anti-SOD2 antibody IHC-P image

Immunohistochemistry: paraffin-embedded Human oophoroma stained with ARG54937 anti-SOD2 antibody at 1:100 dilution (400x lens).



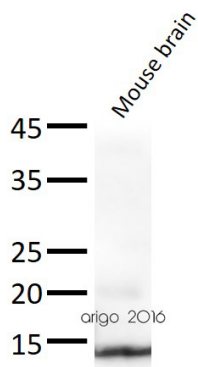
ARG64241 anti-SOD1 antibody WB image

Western blot: 30 µg of HeLa cell lysate stained with ARG64241 anti-SOD1 antibody at 1:2000 dilution.



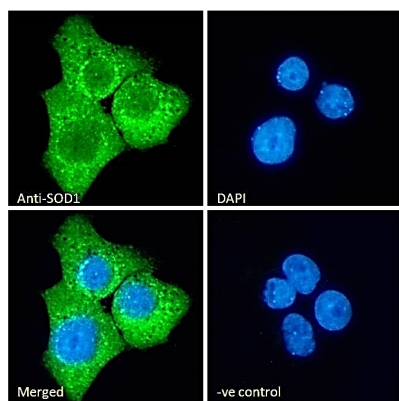
ARG64241 anti-SOD1 antibody ICC/IF image

Immunofluorescence: Paraformaldehyde-fixed U2OS cells, permeabilized with 0.15% Triton. Cells were stained with ARG64241 anti-SOD1 antibody (green) at 10 µg/ml dilution for 1 hour. DAPI (blue) for nuclear staining. Negative control: Unimmunized Goat IgG (green) at 10 µg/ml dilution.



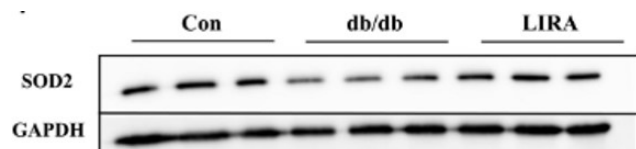
ARG64241 anti-SOD1 antibody WB image

Western blot: 30 µg of Mouse brain lysate stained with ARG64241 anti-SOD1 antibody at 1:2000 dilution.



ARG64241 anti-SOD1 antibody ICC/IF image

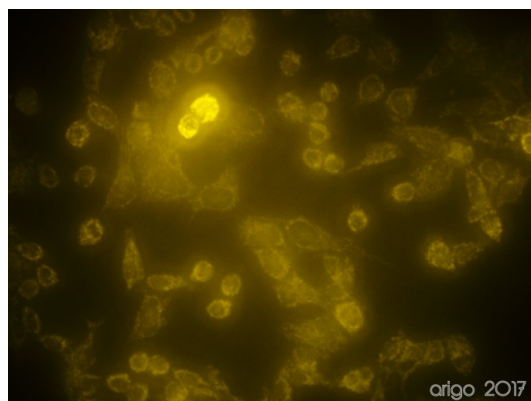
Immunofluorescence: Paraformaldehyde-fixed A431 cells, permeabilized with 0.15% Triton. Cells were stained with ARG64241 anti-SOD1 antibody (green) at 10 µg/ml dilution for 1 hour. DAPI (blue) for nuclear staining. Negative control: Unimmunized Goat IgG (green) at 10 µg/ml dilution.



ARG54937 anti-SOD2 antibody WB image

Western blot: Mouse hippocampal stained with ARG54937 anti-SOD2 antibody.

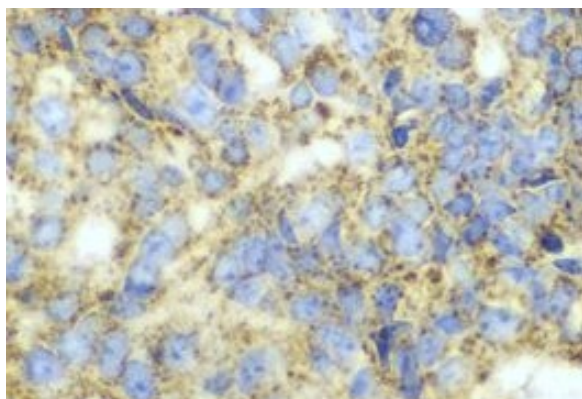
From Ji-Ren An et al. Front Cell Neurosci. (2023), [doi: 10.3389/fncel.2023.1136070](https://doi.org/10.3389/fncel.2023.1136070), Fig. 7F.



ARG54937 anti-SOD2 antibody ICC/IF image

Immunofluorescence: 100% Methanol fixed (RT, 10 min) HeLa cells stained with ARG54937 anti-SOD2 antibody (orange) at 1:10 dilution.

Secondary antibody: [ARG21917](#) Goat anti-Rabbit IgG antibody (TRITC)



ARG54937 anti-SOD2 antibody IHC-P image

Immunohistochemistry: Paraffin-embedded Human oophoroma stained with ARG54937 anti-SOD2 antibody at 1:100 dilution (400x lens).