

ARG30272 Phospho p38 MAPK Antibody Duo (Total, pThr180 / Tyr182)

Package: 1 pair
Store at: -20°C

Component

Cat. No.	Component Name	Host clonality	Reactivity	Application	Package
ARG55258	anti-p38 MAPK antibody	Rabbit pAb	Hu, Ms, Rat	ICC/IF, WB	50 µl
ARG51850	anti-p38 MAPK phospho (Thr180 / Tyr182) antibody	Rabbit pAb	Hu, Ms, Rat	WB	50 µl

Summary

Product Description p38 MAP kinase (MAPK), also called RK or CSBP, is the mammalian orthologue of the yeast HOG kinase that participates in a signaling cascade controlling cellular responses to cytokines and stress. Four isoforms of p38 MAPK, p38 α , β , γ (also known as Erk6 or SAPK3), and δ (also known as SAPK4) have been identified. p38 MAPK is activated by a variety of cellular stresses including osmotic shock, inflammatory cytokines, lipopolysaccharide (LPS), UV light, and growth factors. MKK3, MKK6, and SEK activate p38 MAPK by phosphorylation at Thr180 and Tyr182. Activated p38 MAPK has been shown to phosphorylate and activate MAPKAP kinase 2 and to phosphorylate the transcription factors ATF-2, Max, and MEF2.

Rouse, J. et al. (1994) Cell 78, 1027-37.
Han, J. et al. (1994) Science 265, 808-11.
Lee, J.C. et al. (1994) Nature 372, 739-46.
Freshney, N.W. et al. (1994) Cell 78, 1039-49.
Raingeaud, J. et al. (1995) J Biol Chem 270, 7420-6.
Zervos, A.S. et al. (1995) Proc Natl Acad Sci U S A 92, 10531-4.
Yang, S.H. et al. (1999) Mol Cell Biol 19, 4028-38

Target Name p38 MAPK

Alternate Names Phospho p38 MAPK antibody; Phospho Mitogen-activated protein kinase 14 antibody; p38 MAPK phospho (Thr180 / Tyr182) antibody; p38 MAPK antibody

Properties

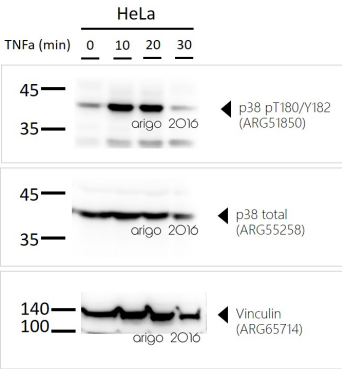
Storage instruction For continuous use, store undiluted antibody at 2-8°C for up to a week. For long-term storage, aliquot and store at -20°C or below. Storage in frost free freezers is not recommended. Avoid repeated freeze/thaw cycles. Suggest spin the vial prior to opening. The antibody solution should be gently mixed before use.

Note For laboratory research only, not for drug, diagnostic or other use.

Bioinformation

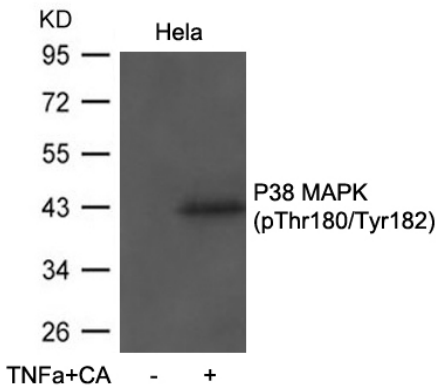
Gene Full Name Phospho Mitogen-activated protein kinase 14 (p38 MAPK) Antibody Duo (Total, pThr180/Tyr182)

Highlight Related Product:
[anti-p38 MAPK antibody](#)



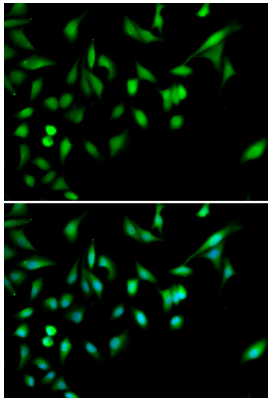
ARG30272 Phospho-p38 MAPK Ab Duo (Total, pThr180/Tyr182) WB image

Western blot: 30 µg of HeLa treated with TNFa at 0, 10, 20, and 30 min. The blots stained with [ARG51850](#) anti-P38 MAPK phospho (Thr180/Tyr182) antibody, [ARG55258](#) anti-p38 MAPK antibody, and [ARG65714](#) anti-Vinculin antibody.



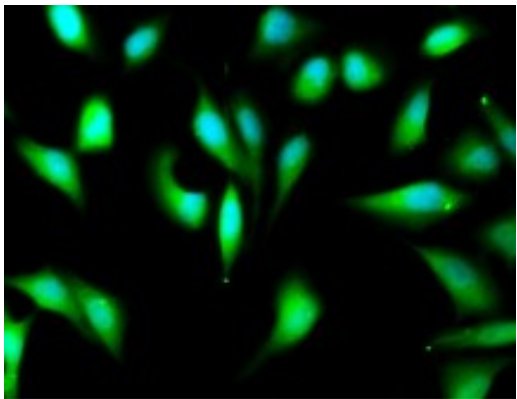
ARG51850 anti-P38 MAPK phospho (Thr180/Tyr182) antibody WB image

Western Blot: extracts from HeLa cells untreated or treated with TNFa+CA stained with anti-P38 MAPK (phospho Thr180/Tyr182) antibody ARG51850.



ARG55258 anti-p38 / MAPK14 antibody ICC/IF image

Immunofluorescence: A549 cell stained with ARG55258 anti-p38 / MAPK14 antibody. Blue: DAPI for nuclear staining.



ARG55258 anti-p38 MAPK antibody ICC/IF image

Immunofluorescence: A549 cell stained with ARG55258 anti-p38 MAPK antibody. Blue: DAPI for nuclear staining.

ARG55258 anti-p38 MAPK antibody WB image

Western blot: 30 µg of HeLa, and Mouse liver lysate stained with ARG55258 anti-p38 MAPK antibody at 1:2000 dilution.

