

ARG30231 Phospho Ezrin Antibody Duo (Total, pT567)

Package: 1 pair
Store at: -20°C

Component

Cat. No.	Component Name	Host clonality	Reactivity	Application	Package
ARG51694	anti-Ezrin phospho (Thr567) antibody	Rabbit pAb	Hu, Ms, Rat	WB	50 µl
ARG63968	anti-Ezrin antibody	Goat pAb	Hu	IHC-P, WB	50 µg

Summary

Product Description Ezrin, also known as cytovillin or villin-2, belongs to ERM protein family that serves as intermediate between the plasma membrane and the actin cytoskeleton. It plays a key role in cell surface structure adhesion, migration, and organization. Phosphorylation of Ezrin has been functionally linked to acid secretion and vesicle recruitment to the apical secretory membrane in gastric parietal cells. Phosphorylation of the conserved T567 residue of ezrin has been shown to alter the N/C oligomerization of Ezrin and promote the formation of actin-rich surface projections in other cells. Zhu et al. 2007. Am J Physiol Cell Physiol 283(3): 874 Zhou et al. 2005. J Cell Sci 118: 4381

Target Name Ezrin

Alternate Names Phospho Ezrin antibody; Ezrin phospho (Thr567) antibody; Ezrin antibody

Properties

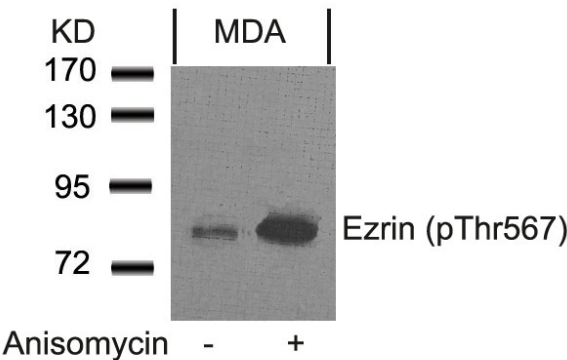
Storage instruction For continuous use, store undiluted antibody at 2-8°C for up to a week. For long-term storage, aliquot and store at -20°C or below. Storage in frost free freezers is not recommended. Avoid repeated freeze/thaw cycles. Suggest spin the vial prior to opening. The antibody solution should be gently mixed before use.

Note For laboratory research only, not for drug, diagnostic or other use.

Bioinformation

Gene Full Name Phospho Ezrin Antibody Duo (Total, pT567)

Research Area Cancer antibody; Signaling Transduction antibody



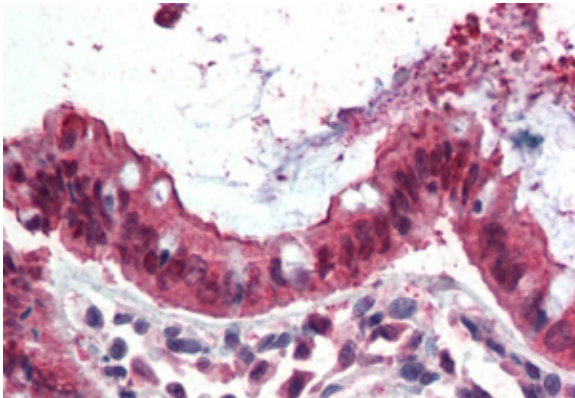
ARG51694 anti-Ezrin phospho (Thr567) antibody WB image

Western Blot: extracts from MDA cells untreated or treated with anisomycin stained with anti-Ezrin (phospho Thr567) antibody ARG51694.



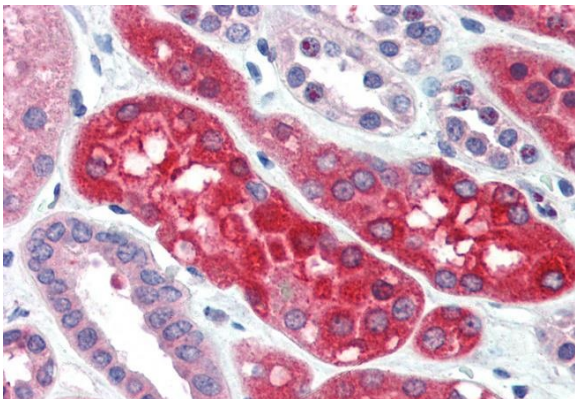
ARG63968 anti-Ezrin / villin 2 antibody WB image

Western Blot: Human Placenta lysate (35 µg protein in RIPA buffer) stained with ARG63968 anti-Ezrin / villin 2 antibody at 1 µg/ml dilution.



ARG63968 anti-Ezrin / villin 2 antibody IHC-P image

Immunohistochemistry: paraffin embedded Human Small Intestine. (Steamed antigen retrieval with citrate buffer pH 6) stained with ARG63968 anti-Ezrin / villin 2 antibody at 3.8 µg/ml dilution followed by AP-staining.



ARG63968 anti-Ezrin antibody IHC-P image

Immunohistochemistry: Paraffin-embedded Human kidney tissue. Antigen Retrieval: Steam tissue section in Citrate buffer (pH 6.0). The tissue section was stained with ARG63968 anti-Ezrin antibody at 3.75 µg/ml dilution followed by AP-staining.