

## ARG30220 Phospho Raf1 Antibody Duo (Total, pS259)

Package: 1 pair  
Store at: -20°C

### Component

Cat. No.	Component Name	Host clonality	Reactivity	Application	Package
ARG51510	anti-Raf1 phospho (Ser259) antibody	Rabbit pAb	Hu, Ms, Rat	IHC-P, WB	50 µl
ARG10060	anti-Raf1 antibody [410]	Mouse mAb	Hu	WB	50 µg

### Summary

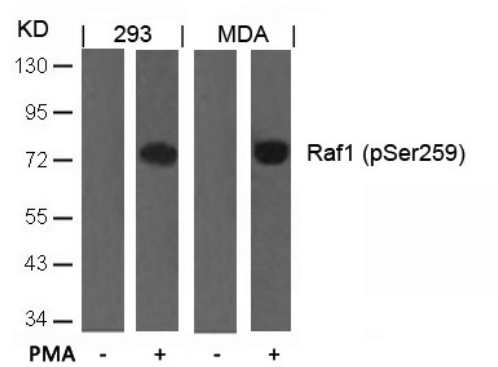
Product Description	c-RAF, or RAF1 is a Serine/threonine-protein kinase that acts as a regulatory link between the membrane-associated Ras GTPases and the MAPK/ERK cascade, and this critical regulatory link functions as a switch determining cell fate decisions including proliferation, differentiation, apoptosis, survival and oncogenic transformation. RAF1 can be deactivated through the phosphorylation by cyclic AMP-dependent protein Kinase (PKA) at various residues. Serine 43 phosphorylation decreased the binding to Ras in serum-starved cells. Mutation of Ser259 and Ser338 increased the basal Raf-1 activity. Dhillon et al. 2002. Mol Cell Biol 22(10):3237-46 Kubicek et al. 2002. J Biol Chem 277(10): 7913
Target Name	Raf1
Alternate Names	Phospho Raf1 antibody; Raf1 antibody; Raf1 phospho (Ser259) antibody

### Properties

Storage instruction	For continuous use, store undiluted antibody at 2-8°C for up to a week. For long-term storage, aliquot and store at -20°C or below. Storage in frost free freezers is not recommended. Avoid repeated freeze/thaw cycles. Suggest spin the vial prior to opening. The antibody solution should be gently mixed before use.
Note	For laboratory research only, not for drug, diagnostic or other use.

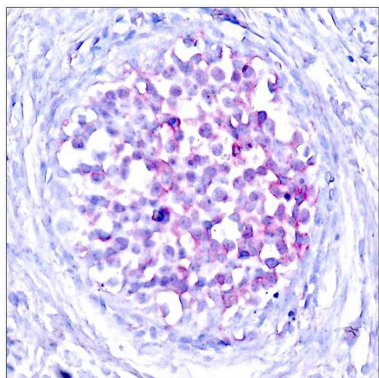
### Bioinformation

Gene Full Name	Phospho Raf1 Antibody Duo (Total, pS259)
Highlight	Related Product: <a href="#">anti-Raf1 antibody;</a>
Research Area	Cancer antibody; Cell Biology and Cellular Response antibody; Cell Death antibody; Metabolism antibody; Signaling Transduction antibody



ARG51510 anti-Raf1 phospho (Ser259) antibody WB image

Western Blot: extracts from 293 and MDA cells untreated or treated with PMA stained with anti-Raf1 (phospho Ser259) antibody ARG51510.



ARG51510 anti-Raf1 phospho (Ser259) antibody IHC-P image

Immunohistochemistry: paraffin-embedded human breast carcinoma tissue stained with anti-Raf1 (phospho Ser259) antibody ARG51510.