

ARG30211 Phospho Tau Antibody Panel (Total, pS396, pS404)

Package: 1 kit
Store at: -20°C

Component

Cat. No.	Component Name	Host clonality	Reactivity	Application	Package
ARG51614	anti-Tau phospho (Ser404) antibody	Rabbit pAb	Hu, Ms, Rat	ICC/IF, IHC-P, WB	50 µl
ARG51604	anti-Tau phospho (Ser396) antibody	Rabbit pAb	Hu, Ms, Rat	IHC-P, WB	50 µl
ARG51094	anti-Tau antibody	Rabbit pAb	Hu, Ms, Rat	IHC-P, WB	50 µl
ARG65351	Goat anti-Rabbit IgG antibody (HRP)	Goat pAb	Rb	ELISA, IHC-P, WB	50 µl

Summary

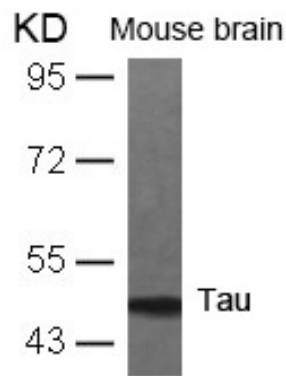
Product Description	Tau is a group of neuronal microtubule-associated proteins that are formed by alternative mRNA splicing and accumulate in neurofibrillary tangles in Alzheimer's disease (AD) brain. Tau plays a key role in regulating microtubule dynamics, axonal transport and neurite outgrowth, and all these functions of tau are modulated by site-specific phosphorylation. Phosphorylation of Tau (Isoform Tau-F) at Ser296 and Ser404 sites by Tau Protein Kinase II is responsible for the functional loss of tau-mediated tubulin polymerization in AD. Evans et al. 2000. J Biol Chem 275(32): 24977-83 Stoothoff and Johnson. 2005. Biochem Biophys Acta 1739(2-3): 280-97
Target Name	Tau
Alternate Names	Phospho Tau antibody; Tau antibody; Tau phospho (Ser396) antibody; Tau phospho (Ser404) antibody

Properties

Storage instruction	For continuous use, store undiluted antibody at 2-8°C for up to a week. For long-term storage, aliquot and store at -20°C or below. Storage in frost free freezers is not recommended. Avoid repeated freeze/thaw cycles. Suggest spin the vial prior to opening. The antibody solution should be gently mixed before use.
Note	For laboratory research only, not for drug, diagnostic or other use.

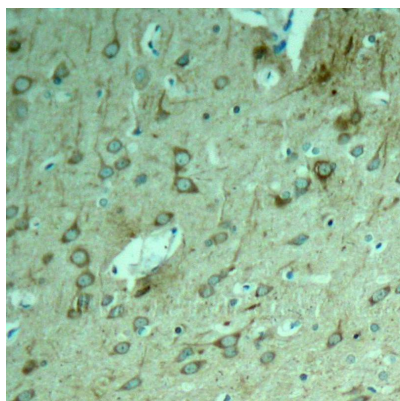
Bioinformation

Gene Full Name	Antibody Panel for Phospho Tau (Total, pS396, pS404)
Highlight	Related Product: anti-Tau antibody;
Research Area	Immune System antibody; Neuroscience antibody; Signaling Transduction antibody



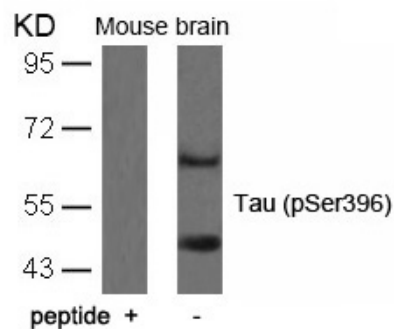
ARG51094 anti-Tau antibody WB image

Western Blot: extracts from mouse brain tissue stained with anti-Tau antibody ARG51094.



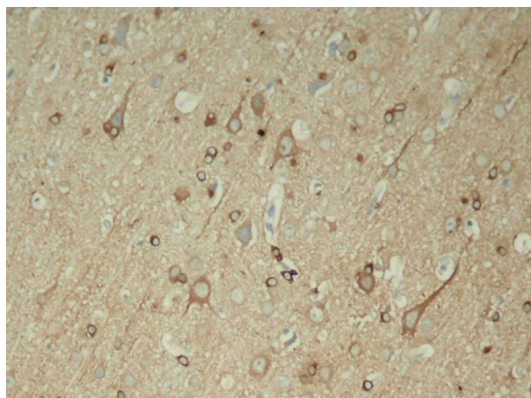
ARG51094 anti-Tau antibody IHC-P image

Immunohistochemistry: paraffin-embedded rat hippocampal region tissue from a model with Alzheimer stained with anti-Tau antibody ARG51094



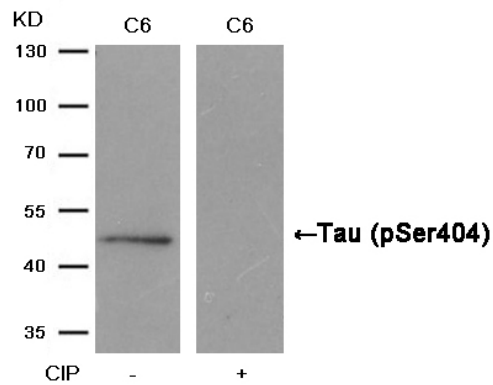
ARG51604 anti-Tau phospho (Ser396) Antibody WB image

Western Blot: extracts from mouse brain tissue stained with anti-Hsp90 antibody [D7 alpha] ARG51604 and the same antibody preincubated with blocking peptide.



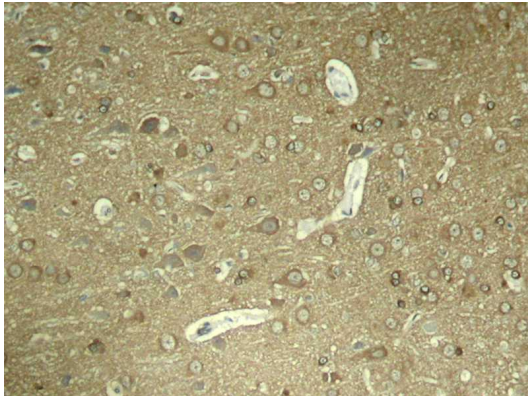
ARG51604 anti-Tau phospho (Ser396) Antibody IHC-P image

Immunohistochemistry: paraffin-embedded rat hippocampal region tissue from a model with Alzheimer stained with anti-Hsp90 antibody [D7 alpha] ARG51604



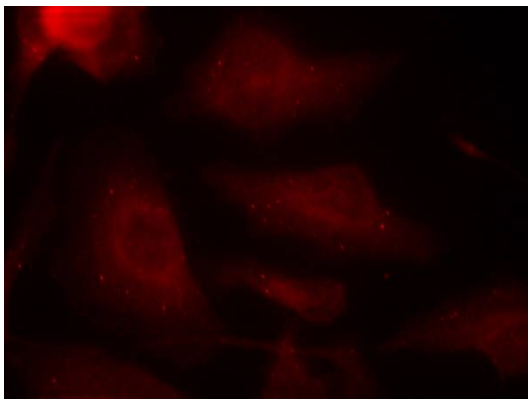
ARG51614 anti-Tau phospho (Ser404) antibody WB image

Western Blot: extracts from C6 cells, treated with calf intestinal phosphatase (CIP), stained with anti-Tau (phospho Ser404) antibody ARG51614.



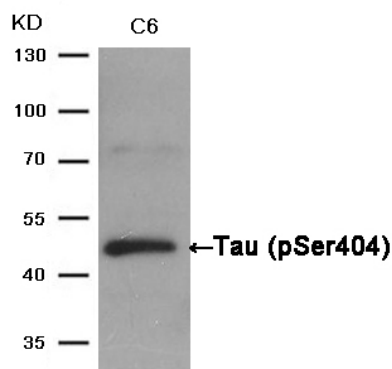
ARG51614 anti-Tau phospho (Ser404) antibody IHC-P image

Immunohistochemistry: paraffin-embedded rat hippocampal region tissue from a model with Alzheimer stained with anti-Tau (phospho Ser404) antibody ARG51614



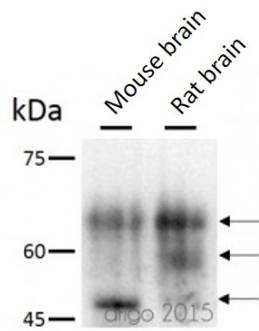
ARG51614 anti-Tau phospho (Ser404) antibody ICC/IF image

Immunofluorescence: methanol-fixed HeLa cells stained with anti-Tau (phospho Ser404) antibody ARG51614.



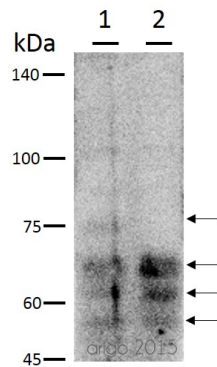
ARG51614 anti-Tau phospho (Ser404) antibody WB image

Western Blot: extracts from C6 cells stained with anti-Tau (phospho Ser404) antibody ARG51614.



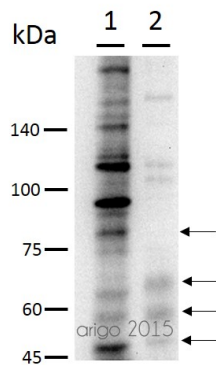
ARG51614 anti-Tau phospho (Ser404) antibody WB image

Western blot: 30 µg of Mouse brain and Rat brain tissue lysates stained with ARG51614 anti-Tau phospho (Ser404) antibody at 1:500 dilution.



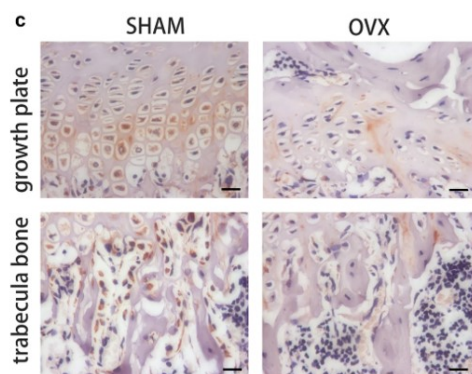
ARG51604 anti-Tau phospho (Ser396) antibody WB image

Western blot: 30 µg of 1) Mouse brain and 2) Rat brain tissue lysate stained with ARG51604 anti-Tau phospho (Ser396) antibody at 1:500 dilution.



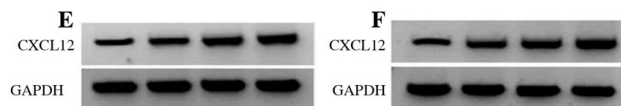
ARG51094 anti-Tau antibody WB image

Western blot: 30 µg of 1) Mouse brain and 2) Rat brain tissue lysate stained with ARG51094 anti-Tau antibody at 1:500 dilution.



ARG65351 Goat anti-Rabbit IgG antibody (HRP) IHC-P image

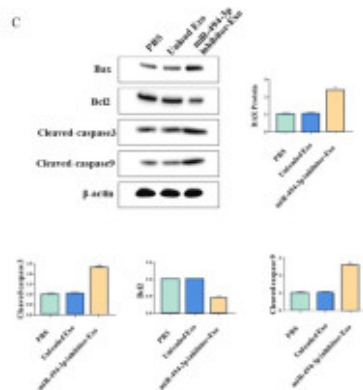
From Yu-Qian Song et al. J Mol Med (Berl) (2022), [doi: 10.1007/s00109-021-02165-0](https://doi.org/10.1007/s00109-021-02165-0), Fig. 5.c.



ARG65351 Goat anti-Rabbit IgG antibody (HRP) WB image

Western blot: HK2 stained with [ARG66421 anti-CXCL12 / SDF1 antibody \[SQab18123\]](#) and [ARG10112 anti-GAPDH antibody \[6C5\]](#) and secondary antibody used ARG65351 Goat anti-Rabbit IgG antibody (HRP).

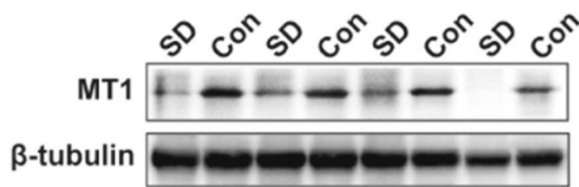
From Zhou Y et al. Central European Journal of Immunology (2022), [doi: 10.5114/ceji.2022.115628](#), Fig. 2. E.



ARG65351 Goat anti-Rabbit IgG antibody (HRP) WB image

Western blot: Gastric cancer cells stained with [ARG66247 anti-Bax antibody](#), [ARG55188 anti-Bcl 2 antibody](#), [ARG57512 anti-Caspase 3 \(cleaved\) antibody](#) and [ARG62346 anti-beta Actin antibody \[BA3R\]](#). Secondary Antibody stained with ARG65351 Goat anti-Rabbit IgG antibody (HRP).

From Limin Zhang et al. Heliyon (2024), [doi: 10.1016/j.heliyon.2024.e30803](#), Fig. 4. C.



ARG65351 Goat anti-Rabbit IgG antibody (HRP) WB image

Western blot: Rat placental stained with [ARG57589 anti-MTNR1A antibody](#) at 1:1000 dilution, ARG65351 Goat anti-Rabbit IgG antibody (HRP) at 1:5000 dilution.

From Jinzhi Li et al. J Reprod Immunol. (2023), [doi: 10.1016/j.jri.2023.104166](#), Fig. 2.B.