

## ARG30203 Phospho FAK Antibody Panel

Package: 1 kit  
Store at: -20°C

### Component

Cat. No.	Component Name	Host clonality	Reactivity	Application	Package
ARG51136	anti-FAK antibody	Rabbit pAb	Hu, Ms, Rat	ICC/IF, IHC-P, WB	50 µl
ARG51706	anti-FAK phospho (Tyr397) antibody	Rabbit pAb	Hu, Ms, Rat	IHC-P, WB	50 µl
ARG51831	anti-FAK phospho (Tyr576 / Tyr577) antibody	Rabbit pAb	Hu, Ms, Rat	ICC/IF, WB	50 µl
ARG51624	anti-FAK phospho (Tyr925) antibody	Rabbit pAb	Hu, Ms, Rat	ICC/IF, WB	50 µl
ARG65351	Goat anti-Rabbit IgG antibody (HRP)	Goat pAb	Rb	ELISA, IHC-P, WB	50 µl

### Summary

Product Description	Focal adhesion kinase (FAK) is a widely expressed cytoplasmic protein tyrosine kinase involved in integrin-mediated signal transduction. It plays an important role in the control of several biological processes, including cell spreading, migration, and survival. Activation of FAK by integrin clustering leads to autophosphorylation at Tyr397, which is a binding site for the Src family kinases PI3K and PLCγ. Recruitment of Src family kinases results in the phosphorylation of Tyr407, Tyr576, and Tyr577 in the catalytic domain, and Tyr871 and Tyr925 in the carboxy-terminal region of FAK. Schaller, M.D. et al. (1994) Mol Cell Biol 14, 1680-8. Cobb, B.S. et al. (1994) Mol Cell Biol 14, 147-55. Parsons, J.T. et al. (2000) Oncogene 19, 5606-13. Schlaepfer, D.D. et al. (1994) Nature 372, 786-791.
Target Name	FAK
Alternate Names	Phospho FAK antibody; Phospho Focal adhesion kinase antibody; FAK antibody; FAK phospho (Tyr925) antibody; FAK phospho (Tyr397) antibody; FAK phospho (Tyr576 / Tyr577) antibody

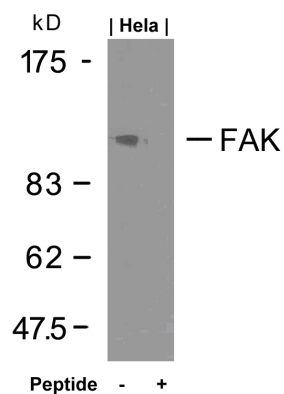
### Properties

Storage instruction	For continuous use, store undiluted antibody at 2-8°C for up to a week. For long-term storage, aliquot and store at -20°C or below. Storage in frost free freezers is not recommended. Avoid repeated freeze/thaw cycles. Suggest spin the vial prior to opening. The antibody solution should be gently mixed before use.
Note	For laboratory research only, not for drug, diagnostic or other use.

### Bioinformation

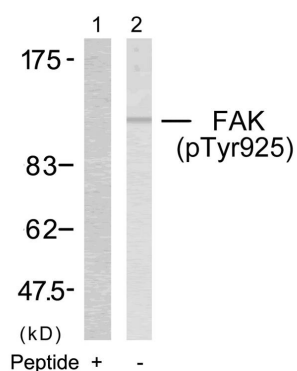
Gene Full Name	Phospho Focal adhesion kinase (FAK) Antibody Panel
Highlight	Related Product: <a href="#">anti-FAK antibody</a> ;
Research Area	Cancer antibody; Cell Biology and Cellular Response antibody; Immune System antibody; Signaling

## Images



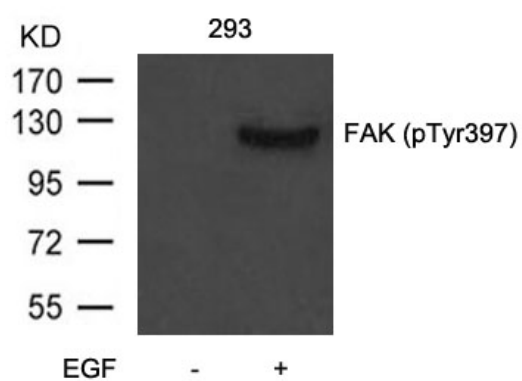
ARG51136 anti-FAK antibody WB image

Western Blot: extracts from HeLa cells stained with anti-FAK antibody ARG51136 and the same antibody preincubated with blocking peptide.



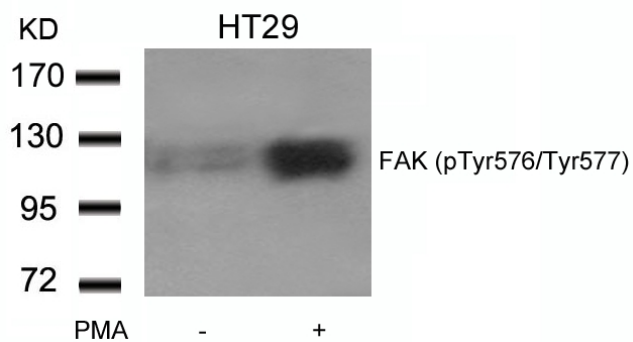
ARG51624 anti-FAK phospho (Tyr925) antibody WB image

Western Blot: extracts from 293 cells stained with anti-FAK (phospho Tyr925) antibody ARG51624 (Lane 2) and the same antibody preincubated with blocking peptide (Lane1).



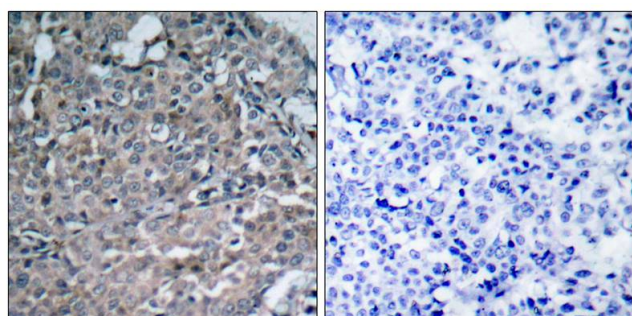
ARG51706 anti-FAK phospho (Tyr397) antibody WB image

Western Blot: extract from 293 cells untreated or treated with EGF stained with anti-FAK (phospho Tyr397) antibody ARG51706



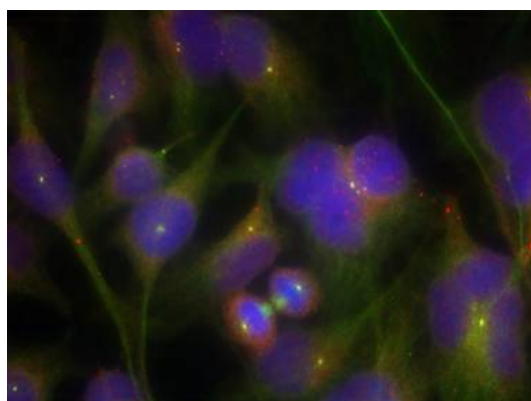
ARG51831 anti-FAK phospho (Tyr576 Tyr577) antibody WB image

Western Blot: extracts from HT29 cells untreated or treated with PMA stained with anti-FAK (phospho Tyr576 Tyr577) antibody ARG51831.



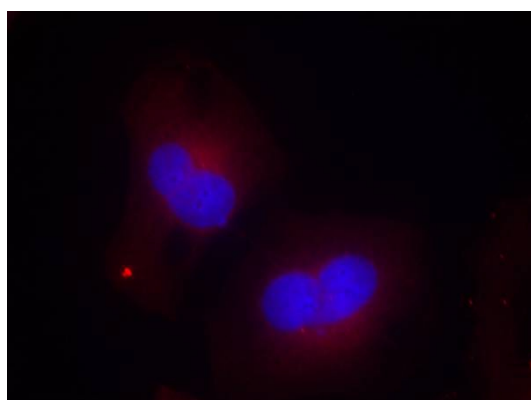
ARG51136 anti-FAK antibody IHC-P image

Immunohistochemistry: paraffin-embedded human breast carcinoma tissue stained with anti-FAK antibody ARG51136 (left) or the same antibody preincubated with blocking peptide (right).



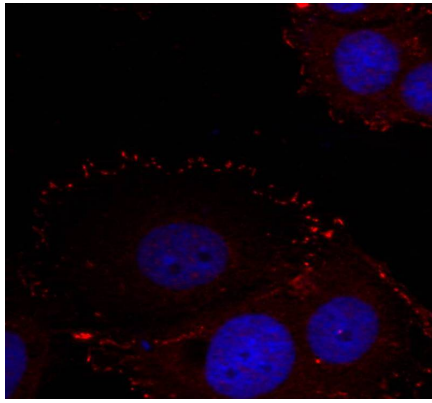
ARG51136 anti-FAK antibody ICC/IF image

Immunofluorescence: methanol-fixed HeLa cells stained with anti-FAK antibody ARG51136.



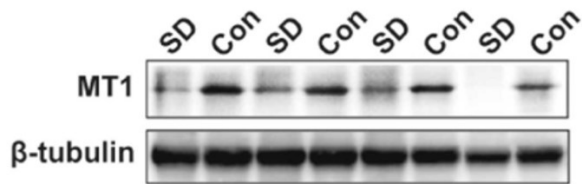
ARG51624 anti-FAK phospho (Tyr925) antibody ICC/IF image

Immunofluorescence: methanol-fixed HeLa cells stained with anti-FAK (phospho Tyr925) antibody ARG51624.



ARG51831 anti-FAK phospho (Tyr576 Tyr577) antibody ICC/IF image

Immunofluorescence: methanol-fixed HeLa cells stained with anti-FAK (phospho Tyr576 Tyr577) antibody ARG51831.



ARG65351 Goat anti-Rabbit IgG antibody (HRP) WB image

Western blot: Rat placental stained with [ARG57589 anti-MTNR1A antibody](#) at 1:1000 dilution, ARG65351 Goat anti-Rabbit IgG antibody (HRP) at 1:5000 dilution.

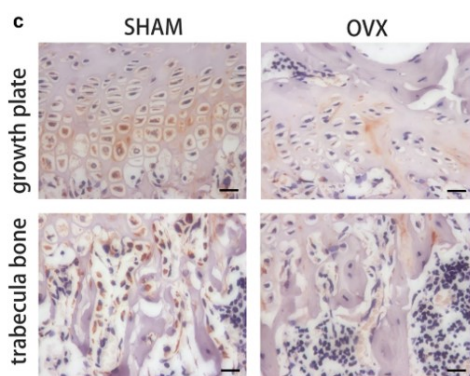
From Jinzhi Li et al. J Reprod Immunol. (2023), [doi: 10.1016/j.jri.2023.104166](#), Fig. 2.B.



ARG65351 Goat anti-Rabbit IgG antibody (HRP) WB image

Western blot: Mouse retina stained with [ARG65693 anti-alpha Tubulin antibody](#) and ARG65351 Goat anti-Rabbit IgG antibody (HRP)

From Xiaoyuan Ye et al. Mol Ther Nucleic Acids. (2024), [doi: 10.1016/j.omtn.2024.102209](#), Fig. 5.D.



ARG65351 Goat anti-Rabbit IgG antibody (HRP) IHC-P image

From Yu-Qian Song et al. J Mol Med (Berl) (2022), [doi: 10.1007/s00109-021-02165-0](#), Fig. 5.c.