

ARG30144

Phospho beta Catenin Antibody Panel (Total, pS33, pS37, pT41 / pS45)

Package: 1 kit
Store at: -20°C

Component

Cat. No.	Component Name	Host clonality	Reactivity	Application	Package
ARG52651	anti-beta Catenin antibody	Rabbit pAb	Hu, Ms, Rat	ICC/IF, IHC-P, IHC-Fr, IP, WB	50 µl
ARG51709	anti-beta Catenin phospho (Ser33) antibody	Rabbit pAb	Hu, Ms, Rat	IHC-P, WB	50 µl
ARG51710	anti-beta Catenin phospho (Ser37) antibody	Rabbit pAb	Hu, Ms, Rat	IHC-P, WB	50 µl
ARG51618	anti-beta Catenin phospho (Thr41 / Ser45) antibody	Rabbit pAb	Hu, Ms, Rat	WB	50 µl
ARG65351	Goat anti-Rabbit IgG antibody (HRP)	Goat pAb	Rb	ELISA, IHC-P, WB	50 µl

Summary

Product Description	<p>β-Catenin is a key downstream effector in the Wnt signaling pathway. It is implicated in two major biological processes in vertebrates: early embryonic development and tumorigenesis. CK1 phosphorylates β-catenin at Ser45. This phosphorylation event primes β-catenin for subsequent phosphorylation by GSK-3β. GSK-3β destabilizes β-catenin by phosphorylating it at Ser33, Ser37, and Thr41. Both Akt and PKA were shown to phosphorylate β-catenin at Ser552 and Ser675. Phosphorylation at Ser552 and Ser675 induces β-catenin accumulation in the nucleus and increases its transcriptional activity. This antibody panel investigates different processes through the phosphorylation on multiple site of β-Catenin.</p> <p>Cadigan, K.M. and Nusse, R. (1997) Genes Dev 11, 3286-305. Amit, S. et al. (2002) Genes Dev 16, 1066-76. Liu, C. et al. (2002) Cell 108, 837-47. Yanagawa, S. et al. (2002) EMBO J 21, 1733-42. Yost, C. et al. (1996) Genes Dev 10, 1443-54. Fang D et al. (2007) J Biol Chem 282, 11221-9. He, X.C. et al. (2007) Nat. Genet. 39, 189-198.</p>
Target Name	beta Catenin
Alternate Names	Phospho beta Catenin antibody; beta Catenin phospho (Thr41 / Ser45) antibody; beta Catenin phospho (Ser33) antibody; beta Catenin phospho (Ser37) antibody; beta Catenin antibody

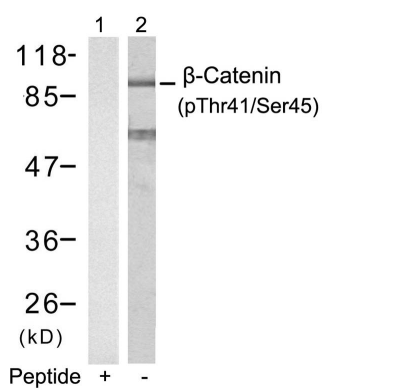
Properties

Storage instruction	For continuous use, store undiluted antibody at 2-8°C for up to a week. For long-term storage, aliquot and store at -20°C or below. Storage in frost free freezers is not recommended. Avoid repeated freeze/thaw cycles. Suggest spin the vial prior to opening. The antibody solution should be gently mixed before use.
Note	For laboratory research only, not for drug, diagnostic or other use.

Bioinformation

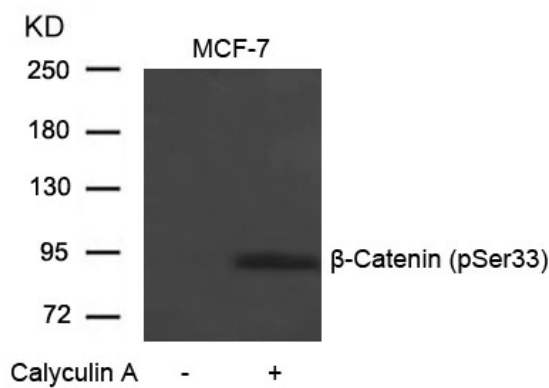
Gene Full Name	Antibody Panel for Phospho beta Catenin (Total, pS33, pS37, pT41/pS45)
Highlight	Related Product: anti-beta Catenin antibody ;
Research Area	Cancer antibody; Cell Biology and Cellular Response antibody; Developmental Biology antibody; Immune System antibody; Neuroscience antibody; Signaling Transduction antibody

Images



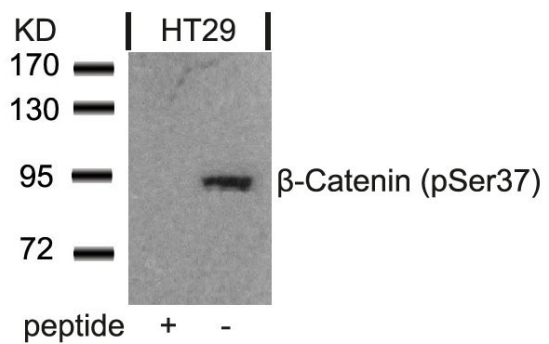
ARG51618 anti-beta Catenin phospho (Thr41/Ser45) antibody WB image

Western Blot: extracts from SW626 cells stained with anti-beta Catenin (phospho Thr41/Ser45) antibody ARG51618 (Lane 2) and the same antibody preincubated with blocking peptide (Lane1).



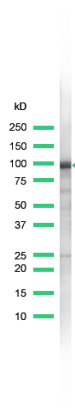
ARG51709 anti-beta Catenin phospho (Ser33) antibody WB image

Western Blot: extracts from MCF-7 cells untreated or treated with Calyculin A stained with anti-beta Catenin (phospho Ser33) antibody ARG51709.



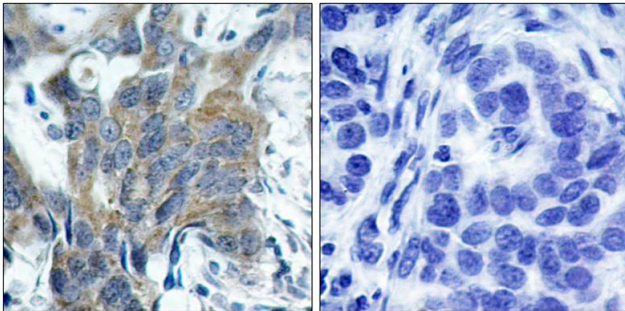
ARG51710 anti-beta Catenin phospho (Ser37) antibody WB image

Western Blot: extracts from HT29 cells stained with anti-beta Catenin (phospho Ser37) antibody ARG51710 and the same antibody preincubated with blocking peptide .



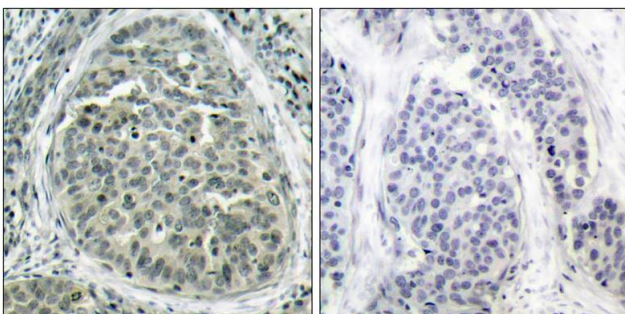
ARG52651 anti-Catenin-beta antibody WB image

Western Blot: A431 stained with Catenin-beta antibody (ARG52651)



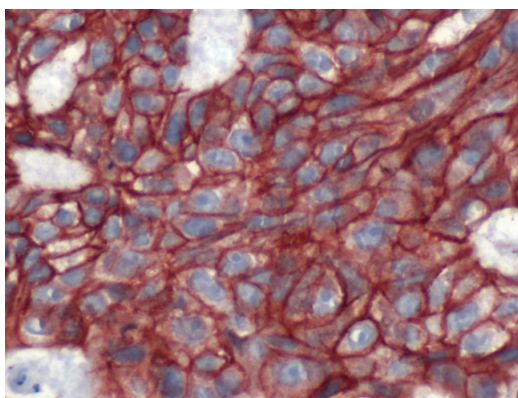
ARG51709 anti-beta Catenin phospho (Ser33) antibody IHC-P image

Immunohistochemistry: paraffin-embedded human breast carcinoma tissue stained with anti-beta Catenin (phospho Ser33) antibody ARG51709 (left) or the same antibody preincubated with blocking peptide (right).



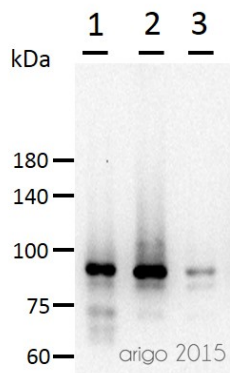
ARG51710 anti-beta Catenin phospho (Ser37) antibody IHC-P image

Immunohistochemistry: paraffin-embedded human breast carcinoma tissue stained with anti-beta Catenin (phospho Ser37) antibody ARG51710 (left) or the same antibody preincubated with blocking peptide (right).



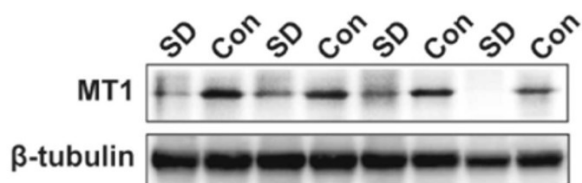
ARG52651 anti-Catenin-beta antibody IHC-P image

Immunohistochemistry: Human Breast Carcinoma stained with Catenin-beta antibody (ARG52651)



ARG52651 anti-beta Catenin antibody WB image

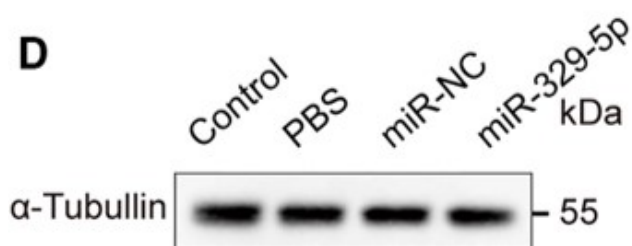
Western blot: 30 µg of 1) 293T, 2) 3T3, and 3) Mouse liver lysate stained with ARG52651 anti-beta Catenin antibody at 1:500 dilution.



ARG65351 Goat anti-Rabbit IgG antibody (HRP) WB image

Western blot: Rat placental stained with [ARG57589 anti-MTNR1A antibody](#) at 1:1000 dilution, ARG65351 Goat anti-Rabbit IgG antibody (HRP) at 1:5000 dilution.

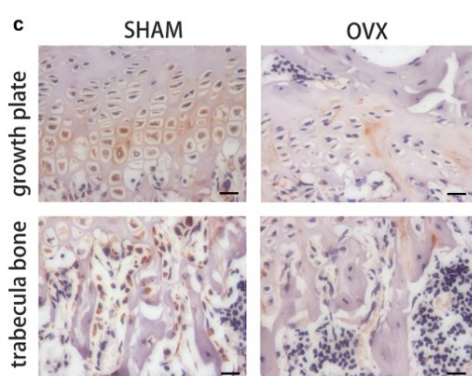
From Jinzhi Li et al. J Reprod Immunol. (2023), [doi: 10.1016/j.jri.2023.104166](#), Fig. 2.B.



ARG65351 Goat anti-Rabbit IgG antibody (HRP) WB image

Western blot: Mouse retina stained with [ARG65693 anti-alpha Tubulin antibody](#) and ARG65351 Goat anti-Rabbit IgG antibody (HRP)

From Xiaoyuan Ye et al. Mol Ther Nucleic Acids. (2024), [doi: 10.1016/j.omtn.2024.102209](#), Fig. 5.D.



ARG65351 Goat anti-Rabbit IgG antibody (HRP) IHC-P image

From Yu-Qian Song et al. J Mol Med (Berl) (2022), [doi: 10.1007/s00109-021-02165-0](#), Fig. 5.c.