

ARG30078 Beta 2 Microglobulin ELISA Antibody Duo

Package: 1 pair
Store at: -20°C

Component

Cat. No.	Component Name	Host clonality	Reactivity	Application	Package
ARG10206	anti-beta 2 Microglobulin antibody [D2E9]	Mouse mAb	Hu	ELISA, FACS, ICC/IF, WB	100 µg
ARG10207	anti-beta 2 Microglobulin antibody [D3A2] (HRP)	Mouse mAb	Hu	ELISA	100 µl

Summary

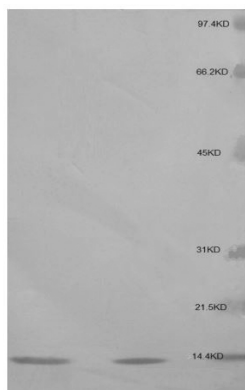
Product Description	Human beta 2 microglobulin (B2MG or B2M) is a component of major histocompatibility complex 1 (MHC1). It is abundant at the surface of lymphocytes and exists at the surface of all cell types except red cells and platelets. B2MG is normally filtered out of blood through glomeruli, but the process is impaired in patients with renal diseases. Elevated B2MG level is implicated with lymphoma, multiple myeloma, renal diseases, viral infections and auto-immune conditions. ARG30078 Beta 2 Microglobulin ELISA Duos, includes a capture antibody, ARG10206 beta 2 Microglobulin antibody [D2E9] and a HRP-conjugated tracer antibody, ARG10207 beta 2 Microglobulin antibody [D3A2] (HRP), for studying Human beta 2 microglobulin (B2MG) protein expression level by ELISA.
Target Name	beta 2 Microglobulin
Alternate Names	Beta 2 Microglobulin ELISA antibody; beta 2 Microglobulin antibody; HRP-conjugated beta 2 Microglobulin antibody

Properties

Storage instruction	For continuous use, store undiluted antibody at 2-8°C for up to a week. For long-term storage, aliquot and store at -20°C or below. Storage in frost free freezers is not recommended. Avoid repeated freeze/thaw cycles. Suggest spin the vial prior to opening. The antibody solution should be gently mixed before use.
Note	For laboratory research only, not for drug, diagnostic or other use.

Bioinformation

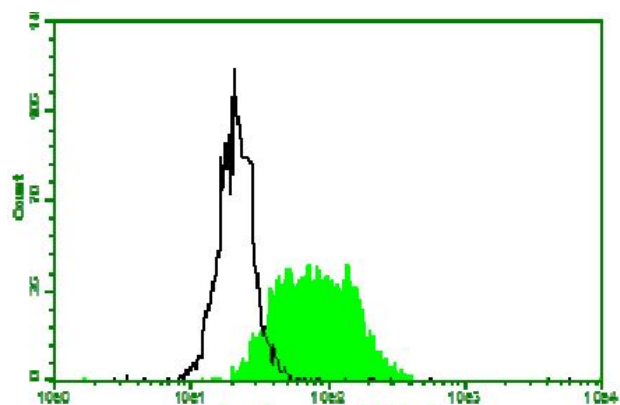
Gene Full Name	ELISA Antibody Duo for beta 2 Microglobulin
Highlight	Related Product: anti-beta 2 Microglobulin antibody
Research Area	Cancer antibody; Cell Biology and Cellular Response antibody



ARG10206 anti-beta 2 Microglobulin antibody [D2E9] WB image

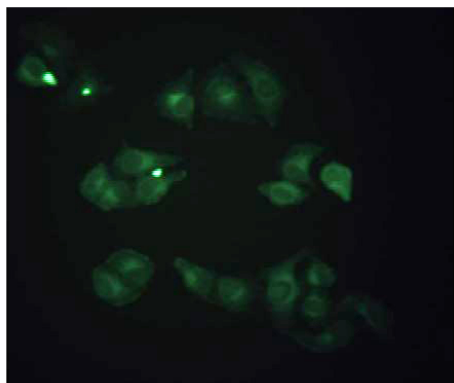
Western Blot: 1. B2MG antigen (100 ng) 2. Jurkat cell lysate stained with anti-beta 2 Microglobulin antibody [D2E9] (ARG10206) at 1µg/mL

The molecular weight of B2MG is about 13-14KD



ARG10206 anti-beta 2 Microglobulin antibody [D2E9] Flow Cytometry image

Flow Cytometry: HeLa cells stained with anti-beta 2 Microglobulin antibody [D2E9] (ARG10206) followed by incubation with fluorescence labelled secondary antibody.



ARG10206 anti-beta 2 Microglobulin antibody [D2E9] ICC/IF image

Immunofluorescence: Methanol-fixed HeLa cells stained with anti-beta 2 Microglobulin antibody [D2E9] (ARG10206) (green)