

ARG30063 Beta amyloid peptide 42 ELISA Antibody Duo

Package: 1 pair
Store at: -20°C

Component

Cat. No.	Component Name	Host clonality	Reactivity	Application	Package
ARG10183	anti-Amyloid Precursor Protein antibody [NT 4A2]	Mouse mAb	Hu	ELISA, IHC-P	100 µg
ARG10184	anti-beta Amyloid (1 - 42) antibody [CA9 10C11] (Biotin)	Mouse mAb	Hu, Ms, Rat, NHuPrm	ELISA	100 µl

Summary

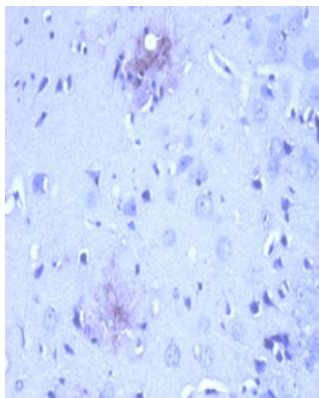
Product Description	Amyloid beta peptides Aβ42 and Aβ40 have been investigated extensively for predicating Alzheimer's disease. A recent study on amyloid beta peptide Aβ43 in brain showed that Aβ43 is more fibrillogenic than other amyloid beta peptides and could be more useful as a biomarker or therapeutic target for Alzheimer's disease. Since Aβ40, Aβ42 and Aβ43 are different only at the few C-end amino acids, antibody to N-terminal sequence can bind with all three amyloid beta peptides. ARG30063 Beta amyloid peptide 42 ELISA Duos, includes a capture antibody, ARG10183 amyloid beta peptide antibody [NT 4A2], N-terminal and a Biotin-conjugated tracer antibody, ARG10184 Amyloid beta Peptide 42 antibody [CA9 10C11] (Biotin), for studying Beta amyloid peptide 42 expression level by ELISA.
Target Name	Beta amyloid peptide 42
Alternate Names	Beta amyloid peptide 42 ELISA antibody; Amyloid Precursor Protein antibody; Biotin-conjugated beta Amyloid (1 - 42) antibody

Properties

Storage instruction	For continuous use, store undiluted antibody at 2-8°C for up to a week. For long-term storage, aliquot and store at -20°C or below. Storage in frost free freezers is not recommended. Avoid repeated freeze/thaw cycles. Suggest spin the vial prior to opening. The antibody solution should be gently mixed before use.
Note	For laboratory research only, not for drug, diagnostic or other use.

Bioinformation

Gene Full Name	ELISA Antibody Duo for Beta amyloid peptide 42
Highlight	Related Product: anti-Amyloid Precursor Protein antibody; anti-beta Amyloid (1 - 42) antibody;
Research Area	Neuroscience antibody



ARG10183 anti-Amyloid Precursor Protein antibody [NT 4A2] IHC-P image

Immunohistochemistry: After heat-induced antigen retrieval, Formalin-fixed and paraffin-embedded brain tissue section from 12 month old APPswe/PSEN1dE9 transgenic Alzheimer's disease mouse model stained with ARG10183 anti-Amyloid Precursor Protein antibody [NT 4A2] at 10 µg/ml, 4°C and overnight.