

ARG30046 Phospho RB Antibody Duo (Total, pS807)

Package: 1 pair
Store at: -20°C

Component

Cat. No.	Component Name	Host clonality	Reactivity	Application	Package
ARG51103	anti-Rb1 / Retinoblastoma protein antibody	Rabbit pAb	Hu, Ms, Rat	IHC-P, WB	50 µl
ARG51632	anti-Rb1 / Retinoblastoma protein phospho (Ser807) antibody	Rabbit pAb	Hu, Ms, Rat	IHC-P, WB	50 µl

Summary

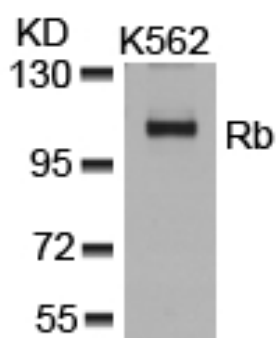
Target Name	RB
Alternate Names	Phospho RB antibody; Phospho Retinoblastoma protein antibody; Rb1 / Retinoblastoma protein antibody; Rb1 / Retinoblastoma protein phospho (Ser807) antibody

Properties

Storage instruction	For continuous use, store undiluted antibody at 2-8°C for up to a week. For long-term storage, aliquot and store at -20°C or below. Storage in frost free freezers is not recommended. Avoid repeated freeze/thaw cycles. Suggest spin the vial prior to opening. The antibody solution should be gently mixed before use.
Note	For laboratory research only, not for drug, diagnostic or other use.

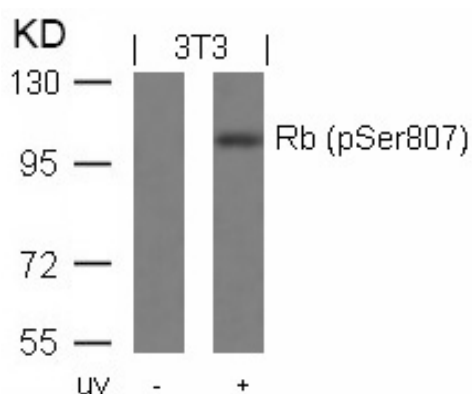
Bioinformation

Gene Full Name	Phospho Retinoblastoma protein (RB) Antibody Duo (Total, pS807)
Highlight	Related Product: anti-Rb1 / Retinoblastoma protein antibody;
Research Area	Cancer antibody; Cell Biology and Cellular Response antibody; Controls and Markers antibody; Gene Regulation antibody



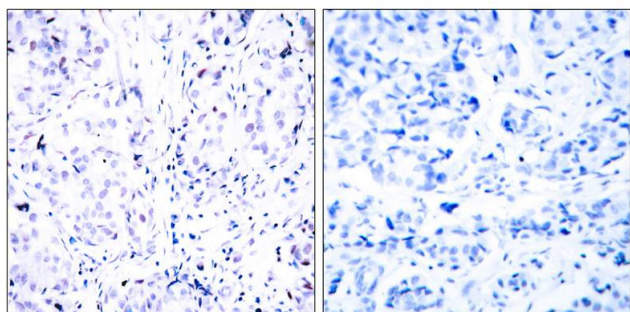
ARG51103 anti-Rb antibody WB image

Western Blot: extracts from K562 cells stained with anti-Rb antibody ARG51103.



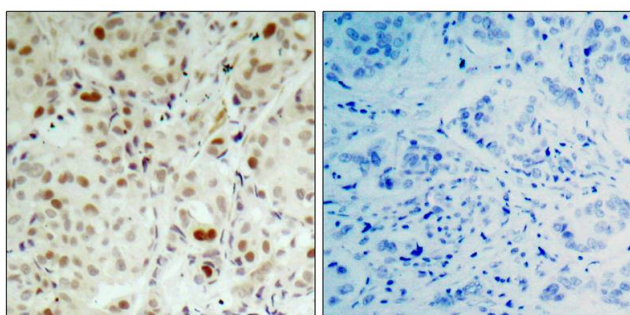
ARG51632 anti-Rb phospho (Ser807) antibody WB image

Western Blot: extracts from 3T3 cells untreated or treated with UV stained with anti-Rb (phospho Ser807) antibody ARG51632.



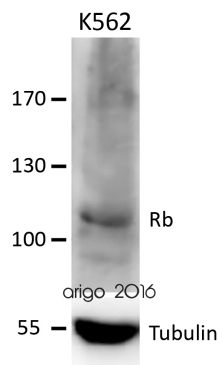
ARG51103 anti-Rb antibody IHC-P image

Immunohistochemistry: paraffin-embedded human breast carcinoma tissue stained with anti-Rb antibody ARG51103 (left) or the same antibody preincubated with blocking peptide (right).



ARG51632 anti-Rb phospho (Ser807) antibody IHC-P image

Immunohistochemistry: paraffin-embedded human breast carcinoma tissue stained with anti-Rb (phospho Ser807) antibody ARG51632 (left) or the same antibody preincubated with blocking peptide (right).



ARG51103 anti-Rb1 / Retinoblastoma protein antibody WB image

Western blot: 20 µg of K562 cell lysate stained with [ARG51103](#) anti-Rb1 / Retinoblastoma protein antibody at 1:500 dilution. Positive control: Tubulins were stained with [ARG62347](#) anti-beta Tubulin antibody [BT7R] at 1:4000 dilution.