

ARG30040 Phospho IRS1 Antibody Duo (pS636, pS307)

Package: 1 pair
Store at: -20°C

Component

Cat. No.	Component Name	Host clonality	Reactivity	Application	Package
ARG51720	anti-IRS1 phospho (Ser636) antibody	Rabbit pAb	Hu, Ms, Rat	IHC-P, WB	50 µl
ARG51725	anti-IRS1 phospho (Ser307) antibody	Rabbit pAb	Hu, Ms, Rat	IHC-P	50 µl

Summary

Product Description Insulin receptor substrate 1 (IRS-1) is a signalling adapter protein that is phosphorylated by insulin receptor tyrosine kinase. Mutations in IRS-1 are associated with type II diabetes and susceptibility to insulin resistance. IRS-1 plays a key role in transmitting signals from the insulin and insulin-like growth factor-1 (IGF-1) receptors to PI3K / Akt and Erk MAP kinase pathways. IRS-1 also plays important biological function for both metabolic and mitogenic pathways. IRS-1 could be phosphorylated by p70S6K, a downstream protein of Akt, at Ser-307, Ser-636, and Ser-1101 to insulin sensitivity. In addition, IRS-1 is also potentially phosphorylated by the PKCθ kinase at Ser307. ARG30040, ARG30041 and ARG30042 IRS-1 phospho-Duos, containing antibodies recognize total IRS-1 and phosphorylated IRS-1 at Ser307 or Ser636, and PKC theta (pS695). These Duos are designed for the IRS-1 related studies; insulin related signaling and IRS-1 regulation study.

Related news:

[Quantifying IR-associated Adipokines with Multiplex ELISA kit;](#)

Target Name IRS1

Alternate Names Phospho IRS1 antibody; Phospho Insulin receptor substrate 1 antibody; IRS1 phospho (Ser636) antibody; IRS1 phospho (Ser307) antibody

Properties

Storage instruction For continuous use, store undiluted antibody at 2-8°C for up to a week. For long-term storage, aliquot and store at -20°C or below. Storage in frost free freezers is not recommended. Avoid repeated freeze/thaw cycles. Suggest spin the vial prior to opening. The antibody solution should be gently mixed before use.

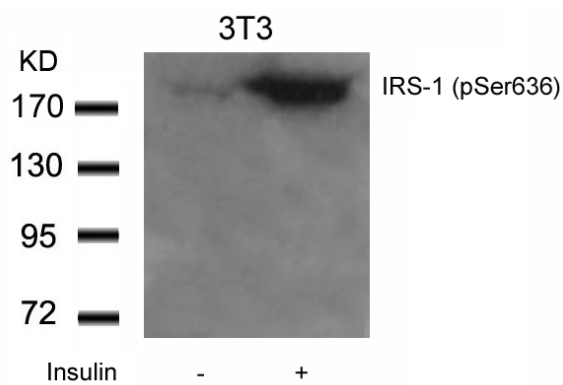
Note For laboratory research only, not for drug, diagnostic or other use.

Bioinformation

Gene Full Name Phospho Insulin receptor substrate 1 (IRS1) Antibody Duo (pS636, pS307)

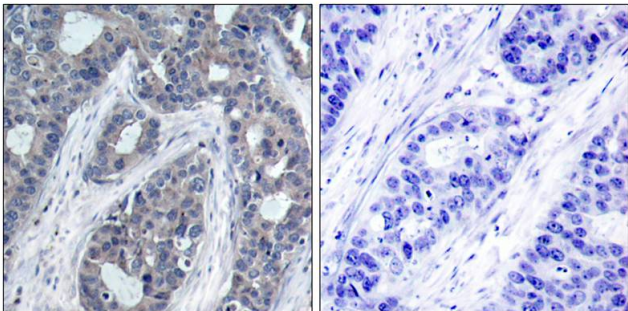
Highlight Related Product:
[anti-IRS1 phospho \(Ser307\) antibody;](#)

Research Area Cancer antibody; Cell Biology and Cellular Response antibody; Controls and Markers antibody; Metabolism antibody; Neuroscience antibody; Signaling Transduction antibody



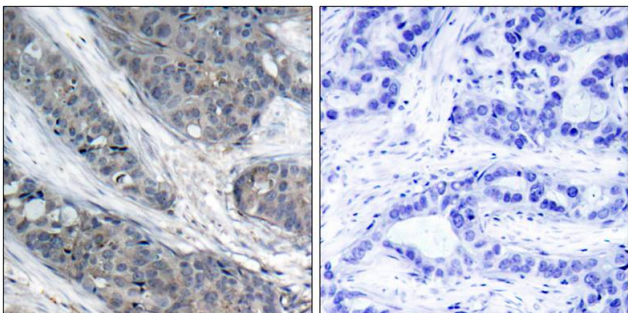
ARG51720 anti-IRS-1 phospho (Ser636) antibody WB image

Western Blot: extracts from 3T3 cells untreated or treated with Insulin stained with anti-IRS-1 (phospho Ser636) antibody ARG51720.



ARG51720 anti-IRS-1 phospho (Ser636) antibody IHC-P image

Immunohistochemistry: paraffin-embedded human breast carcinoma tissue stained with anti-IRS-1 (phospho Ser636) antibody ARG51720 (left) or the same antibody preincubated with blocking peptide (right).



ARG51725 anti-IRS-1 phospho (Ser307) antibody IHC-P image

Immunohistochemistry: paraffin-embedded human breast carcinoma tissue, stained with anti-IRS-1 (phospho Ser307) antibody ARG51725).