

ARG24032 Goat anti-Human IgE antibody (Biotin)

Package: 500 µg
Store at: 4°C

Summary

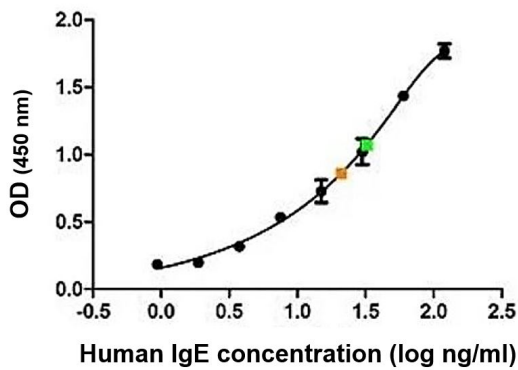
Product Description	Biotin-conjugated Goat Polyclonal antibody recognizes Human IgE
Tested Reactivity	Hu, R. Mk
Tested Application	ELISA, FACS, WB
Host	Goat
Clonality	Polyclonal
Isotype	IgG
Target Name	IgE
Species	Human
Immunogen	Native Human IgE.
Conjugation	Biotin

Application Instructions

Application table	Application	Dilution
	ELISA	1:10000 - 1:100000
	FACS	Assay-dependent
	WB	1:10000 - 1:100000
Application Note	* The dilutions indicate recommended starting dilutions and the optimal dilutions or concentrations should be determined by the scientist.	

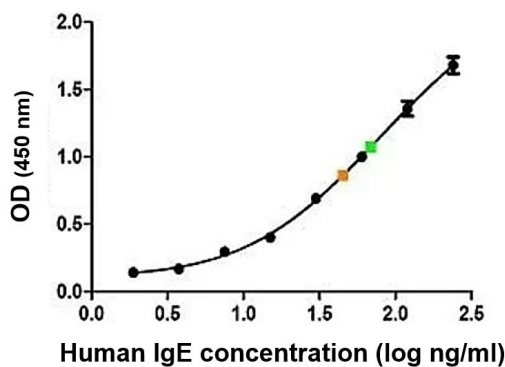
Properties

Form	Liquid
Purification	Purified.
Buffer	PBS, 0.09% Sodium azide and 0.2% BSA.
Preservative	0.09% Sodium azide
Stabilizer	0.2% BSA
Concentration	1 mg/ml
Storage instruction	Aliquot and store in the dark at 2-8°C. Keep protected from prolonged exposure to light. Avoid repeated freeze/thaw cycles. Suggest spin the vial prior to opening. The antibody solution should be gently mixed before use.
Note	For laboratory research only, not for drug, diagnostic or other use.



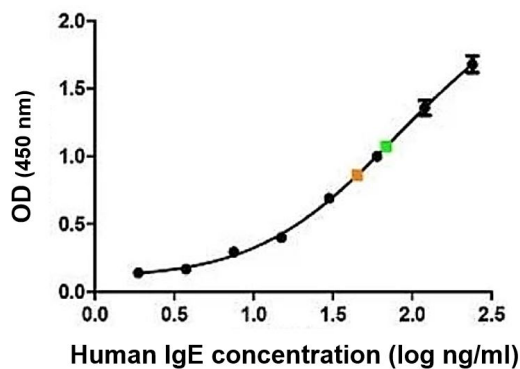
ARG24032 Goat anti-Human IgE antibody (Biotin) standard curve image

ELISA: Mouse anti-Human IgE antibody as a capture antibody at 5 $\mu\text{g/ml}$ dilution and ARG24032 Goat anti-Human IgE antibody (Biotin) as a detection antibody at 2 $\mu\text{g/ml}$ dilution with Purified Human IgE as antigen for generation of the standard curve. Detection is by HRP conjugated streptavidin and substrate. Plasma and serum samples diluted 1:5 are indicated in green and orange respectively.



ARG24032 Goat anti-Human IgE antibody (Biotin) standard curve image

ELISA: Mouse anti-Human IgE antibody as a capture antibody at 5 $\mu\text{g/ml}$ dilution and ARG24032 Goat anti-Human IgE antibody (Biotin) as a detection antibody at 2 $\mu\text{g/ml}$ dilution with Recombinant Human IgE Lambda as antigen for generation of the standard curve. Detection is by HRP conjugated streptavidin and substrate. Plasma and serum samples diluted 1:5 are indicated in green and orange respectively.



ARG24032 Goat anti-Human IgE antibody (Biotin) standard curve image

ELISA: Mouse anti-Human IgE antibody as a capture antibody at 5 $\mu\text{g/ml}$ dilution and ARG24032 Goat anti-Human IgE antibody (Biotin) as a detection antibody at 2 $\mu\text{g/ml}$ dilution with Recombinant Human IgE Kappa as antigen for generation of the standard curve. Detection is by HRP conjugated streptavidin and substrate. Plasma and serum samples diluted 1:5 are indicated in green and orange respectively.