

ARG23909 Rabbit anti-Human IgG (H+L) antibody, pre-adsorbed

Package: 500 µg
Store at: -20°C

Summary

Product Description	Rabbit Polyclonal antibody recognizes Human IgG (H+L)
Tested Reactivity	Hu
Tested Application	ELISA, FLISA, IHC-Fr, IHC-P
Specificity	The antibody reacts with the heavy and light chains of human IgG and the light chains of human IgM and IgA. The antibody is pre-adsorbed with Mouse immunoglobulins and pooled sera, so the antibody may not react with Mouse immunoglobulins, but may react with immunoglobulins from other species.
Host	Rabbit
Clonality	Polyclonal
Isotype	IgG
Target Name	IgG (H+L)
Species	Human
Immunogen	Human IgG
Conjugation	Un-conjugated

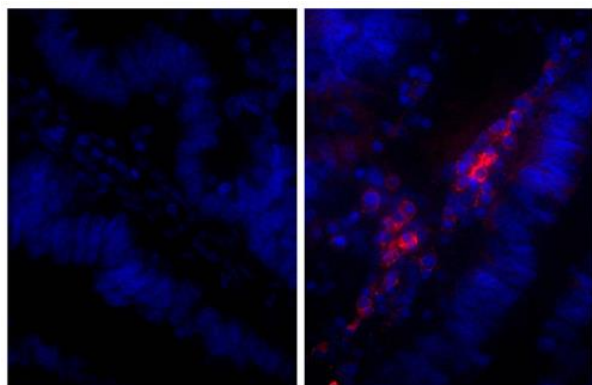
Application Instructions

Pre Adsorbed	Mouse immunoglobulins and pooled sera.										
Application table	<table> <tr> <th>Application</th><th>Dilution</th></tr> <tr> <td>ELISA</td><td>Assay-dependent</td></tr> <tr> <td>FLISA</td><td>Assay-dependent</td></tr> <tr> <td>IHC-Fr</td><td>Assay-dependent</td></tr> <tr> <td>IHC-P</td><td>Assay-dependent</td></tr> </table>	Application	Dilution	ELISA	Assay-dependent	FLISA	Assay-dependent	IHC-Fr	Assay-dependent	IHC-P	Assay-dependent
Application	Dilution										
ELISA	Assay-dependent										
FLISA	Assay-dependent										
IHC-Fr	Assay-dependent										
IHC-P	Assay-dependent										
Application Note	* The dilutions indicate recommended starting dilutions and the optimal dilutions or concentrations should be determined by the scientist.										

Properties

Form	Liquid
Purification	Affinity purification with immunogen.
Buffer	BBS (pH 8.2)
Concentration	1 mg/ml
Storage instruction	For continuous use, store undiluted antibody at 2-8°C for up to a week. For long-term storage, aliquot and store at -20°C or below. Storage in frost free freezers is not recommended. Avoid repeated freeze/thaw cycles. Suggest spin the vial prior to opening. The antibody solution should be gently mixed before use.

Images



ARG23909 Rabbit anti-Human IgG (H+L) antibody (pre-adsorbed) IHC-P image

Immunohistochemistry: Paraffin-embedded Human gastric cancer tissue stained with Rabbit IgG isotype control antibody (left) and ARG23909 Rabbit anti-Human IgG (H+L) antibody (pre-adsorbed) (right), followed by anti-Rabbit IgG (H+L) antibody (Alexa Fluor 555) and DAPI.