

## ARG23794 Goat anti-Mouse IgG (H+L) antibody (FITC), pre-adsorbed

Package: 250 µg  
Store at: 4°C

### Summary

Product Description	FITC-conjugated Goat Polyclonal antibody recognizes Mouse IgG (H+L)
Tested Reactivity	Ms
Tested Application	ELISA, FACS, FLISA, WB
Specificity	Reacts with the heavy and light chains of mouse IgG1, IgG2a, IgG2b and IgG3, and with the light chains of mouse IgM and IgA as demonstrated by ELISA, FLISA, and/or flow cytometry. Minimal cross reactivity with rat immunoglobulins.
Host	Goat
Clonality	Polyclonal
Isotype	IgG
Target Name	IgG (H+L)
Species	Mouse
Conjugation	FITC

### Application Instructions

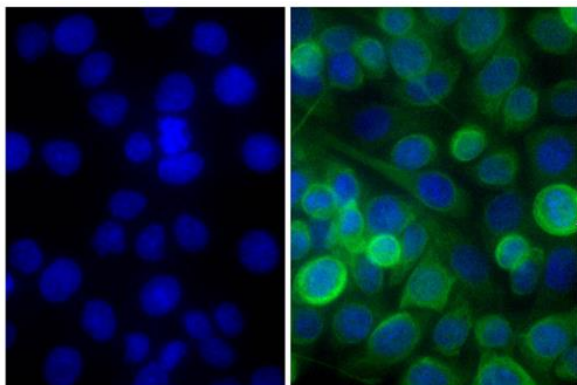
Pre Adsorbed	Rat immunoglobulins and pooled sera.	
Application table	Application	Dilution
	ELISA	Assay-dependent
	FACS	< 1 µg/10 <sup>6</sup> cells
	FLISA	1:100 - 1:400
	WB	Assay-dependent
Application Note	* The dilutions indicate recommended starting dilutions and the optimal dilutions or concentrations should be determined by the scientist.	

### Properties

Form	Liquid
Purification	Affinity purification with immunogen.
Buffer	PBS and 0.1% Sodium azide.
Preservative	0.1% Sodium azide
Concentration	0.5 mg/ml
Storage instruction	Aliquot and store in the dark at 2-8°C. Keep protected from prolonged exposure to light. Avoid repeated freeze/thaw cycles. Suggest spin the vial prior to opening. The antibody solution should be gently mixed before use.

## Images

---



ARG23794 Goat anti-Mouse IgG (H+L) antibody (FITC), pre-adsorbed  
ICC/IF image

Immunofluorescence: Human pancreatic carcinoma cell line MIA  
PaCa-2 was stained with Mouse anti-Cytokeratin 18 (right) followed  
by ARG23794 Goat anti-Mouse IgG (H+L) antibody (FITC), pre-  
adsorbed and DAPI.