

ARG23705 Goat anti-Mouse IgG2a antibody (HRP), pre-adsorbed

Package: 500 µl
Store at: 4°C

Summary

Product Description	HRP-conjugated Goat Polyclonal antibody recognizes Mouse IgG2a
Tested Reactivity	Ms
Species Does Not React With	Hu
Tested Application	ELISA, ELISPOT, FACS, FLISA, ICC/IF, IHC-Fr, IHC-P, Puri, WB
Specificity	Reacts with the heavy chain of mouse IgG2a as demonstrated by ELISA, FLISA, and/or flow cytometry. Minimal cross reactivity with human immunoglobulins. May react with immunoglobulins from other species.
Host	Goat
Clonality	Polyclonal
Isotype	IgG
Target Name	IgG2a
Species	Mouse
Immunogen	IgG2a
Conjugation	HRP

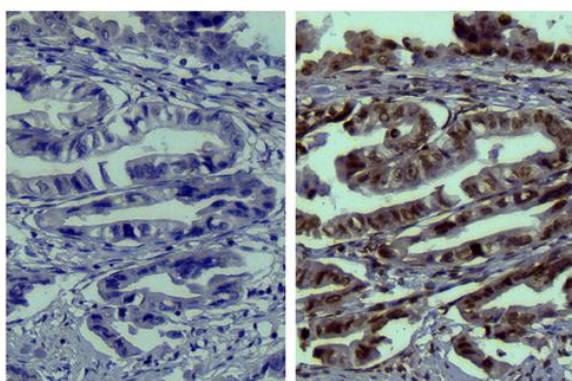
Application Instructions

Pre Adsorbed	Mouse IgM, IgG1, IgG2b, IgG3 and IgA; Pooled human sera; Purified human paraproteins.	
Application table	Application	Dilution
	ELISA	1:4000 - 1:8000
	ELISPOT	Assay-dependent
	FACS	Assay-dependent
	FLISA	Assay-dependent
	ICC/IF	Assay-dependent
	IHC-Fr	Assay-dependent
	IHC-P	Assay-dependent
	Puri	Assay-dependent
	WB	Assay-dependent
Application Note	* The dilutions indicate recommended starting dilutions and the optimal dilutions or concentrations should be determined by the scientist.	

Properties

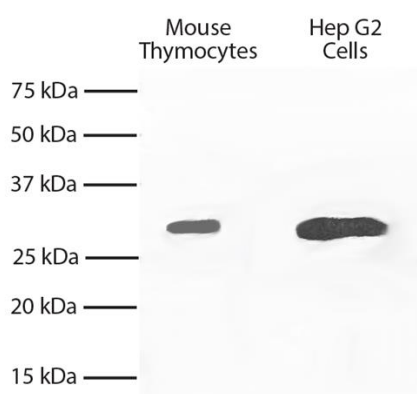
Form	Liquid
Purification	Affinity purification with immunogen.
Buffer	PBS (pH 7.4) and 50% Glycerol.
Stabilizer	50% Glycerol
Storage instruction	Aliquot and store in the dark at 2-8°C. Keep protected from prolonged exposure to light. Avoid repeated freeze/thaw cycles. Suggest spin the vial prior to opening. The antibody solution should be gently mixed before use.
Note	For laboratory research only, not for drug, diagnostic or other use.

Images



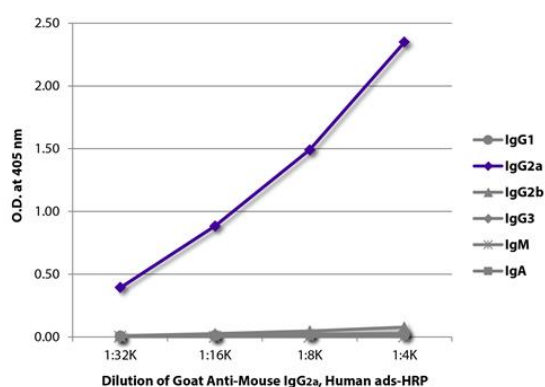
ARG23705 Goat anti-Mouse IgG2a antibody (HRP) (pre-adsorbed)
IHC-P image

Immunohistochemistry: Paraffin-embedded Human gastric cancer tissue stained with [ARG21961](#) Mouse IgG2a Isotype Control antibody [HOPC-1] (left) and [ARG22191](#) anti-MMP9 antibody [SB15c] (right), followed by ARG23705 Goat anti-Mouse IgG2a antibody (HRP) (pre-adsorbed), DAB and hematoxylin.



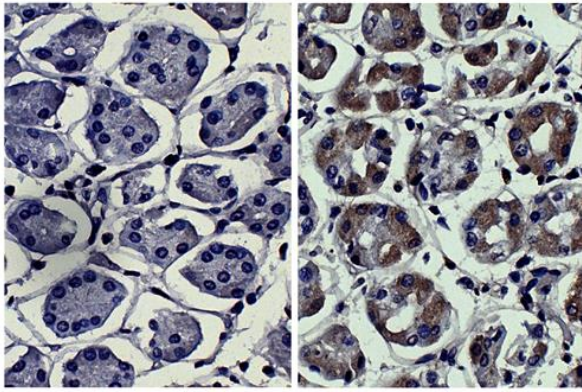
ARG23705 Goat anti-Mouse IgG2a antibody (HRP) (pre-adsorbed)
WB image

Western blot: Mouse thymocytes and HepG2 cell lysates stained with [ARG22305](#) anti-Bcl XL antibody [2H12]. Secondary antibody: ARG23705 Goat anti-Mouse IgG2a antibody (HRP) (pre-adsorbed).



ARG23705 Goat anti-Mouse IgG2a antibody (HRP) (pre-adsorbed)
ELISA image

ELISA: The plate was coated with purified Mouse IgG1, IgG2a, IgG2b, IgG3, IgM, and IgA. Immunoglobulins were detected with serially diluted ARG23705 Goat anti-Mouse IgG2a antibody (HRP) (pre-adsorbed).



ARG23705 Goat anti-Mouse IgG2a antibody (HRP) (pre-adsorbed)
IHC-P image

Immunohistochemistry: Paraffin-embedded Human kidney cancer tissue stained with [ARG21961](#) Mouse IgG2a Isotype Control antibody [HOPC-1] (left) and anti-MMP3 antibody (right) followed by ARG23705 Goat anti-Mouse IgG2a antibody (HRP) (pre-adsorbed), DAB and hematoxylin.