

ARG23597 anti-CD193 / CCR3 antibody

Package: 50 µg
Store at: -20°C

Summary

Product Description	Rabbit Polyclonal antibody recognizes CD193 / CCR3
Tested Reactivity	Hu
Predict Reactivity	Ms, Rat
Tested Application	IHC-P, WB
Specificity	At least three isoforms of CCR3 are known to exist. This antibody will detect all three isoforms.
Host	Rabbit
Clonality	Polyclonal
Isotype	IgG
Target Name	CD193 / CCR3
Species	Human
Immunogen	Synthetic peptide around 14 aa (C-terminus) of Human CD193 / CCR3.
Conjugation	Un-conjugated
Alternate Names	C-C chemokine receptor type 3; CD193; CKR3; CCR-3; Eosinophil eotaxin receptor; CMKBR3; C-C CKR-3; CCR3; CC-CKR-3; CD antigen CD193

Application Instructions

Application table	Application	Dilution
	IHC-P	10 µg/ml
	WB	1 - 2 µg/ml
Application Note	* The dilutions indicate recommended starting dilutions and the optimal dilutions or concentrations should be determined by the scientist.	
Positive Control	Human Spleen	
Observed Size	52 kDa	

Properties

Form	Liquid
Purification	Affinity purification with immunogen.
Buffer	PBS and 0.02% Sodium azide
Preservative	0.02% Sodium azide
Concentration	0.5 mg/ml
Storage instruction	For continuous use, store undiluted antibody at 2-8°C for up to a week. For long-term storage, aliquot and store at -20°C or below. Storage in frost free freezers is not recommended. Avoid repeated

freeze/thaw cycles. Suggest spin the vial prior to opening. The antibody solution should be gently mixed before use.

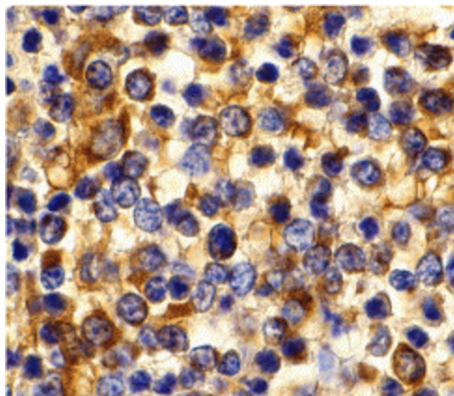
Note

For laboratory research only, not for drug, diagnostic or other use.

Bioinformation

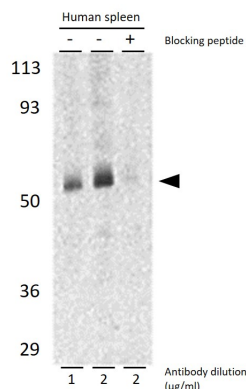
Gene Symbol	CCR3
Gene Full Name	chemokine (C-C motif) receptor 3
Background	The protein encoded by this gene is a receptor for C-C type chemokines. It belongs to family 1 of the G protein-coupled receptors. This receptor binds and responds to a variety of chemokines, including eotaxin (CCL11), eotaxin-3 (CCL26), MCP-3 (CCL7), MCP-4 (CCL13), and RANTES (CCL5). It is highly expressed in eosinophils and basophils, and is also detected in TH1 and TH2 cells, as well as in airway epithelial cells. This receptor may contribute to the accumulation and activation of eosinophils and other inflammatory cells in the allergic airway. It is also known to be an entry co-receptor for HIV-1. This gene and seven other chemokine receptor genes form a chemokine receptor gene cluster on the chromosomal region 3p21. Alternatively spliced transcript variants have been described. [provided by RefSeq, Sep 2009]
Function	Receptor for a C-C type chemokine. Binds to eotaxin, eotaxin-3, MCP-3, MCP-4, RANTES and MIP-1 delta. Subsequently transduces a signal by increasing the intracellular calcium ions level. Alternative coreceptor with CD4 for HIV-1 infection. [UniProt]
Calculated Mw	41 kDa

Images



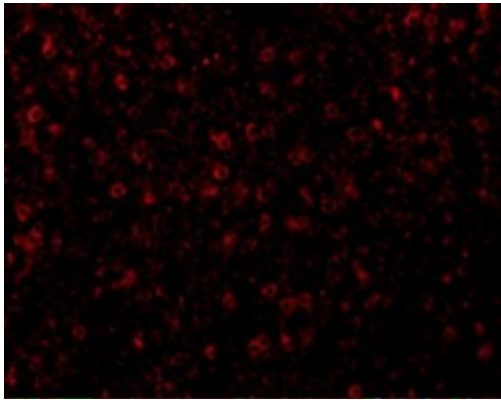
ARG23597 anti-CD193 / CCR3 antibody IHC-P image

Immunohistochemistry: Human spleen tissue stained with ARG23597 anti-CD193 / CCR3 antibody at 10 µg/ml dilution.



ARG23597 anti-CD193 / CCR3 antibody WB image

Western blot: Human spleen tissue lysates stained with ARG23597 anti-CD193 / CCR3 antibody at 1 µg/ml (lane 1) and 2 µg/ml (lane 2), and 2 µg/ml in the presence of blocking peptide (lane 3).



ARG23597 anti-CD193 / CCR3 antibody IHC-P image

Immunohistochemistry: Human Spleen tissue stained with ARG23597 anti-CD193 / CCR3 antibody at 20 µg/ml dilution.