

ARG23549 anti-ABCA1 antibody [5A1-1422] (PE)

Package: 100 tests
Store at: 4°C

Summary

Product Description	PE-conjugated Rat Monoclonal antibody [5A1-1422] recognizes ABCA1. Rat anti Mouse ABCA1 antibody, clone 5A1-1422 recognizes murine adenosine triphosphate (ATP) Binding cassette transporter 1 (ABCA1). The ABC transporters are a large family of conserved proteins that transport a wide variety of molecules across cellular membranes. ABCA1 is a member of the ABC-A sub-family, which acts as a lipid translocator. The molecule was originally identified as a scavenger receptor on macrophages and research shows that ABCA1 also plays a major role in cholesterol metabolism. ABCA1 may play an important role in protecting against cardiovascular disease. Mutations in ABCA1 gene have been associated with Tangiers disease, a genetic disorder of lipid metabolism, and familial high density lipoprotein (HDL) deficiency.
Tested Reactivity	Ms
Tested Application	FACS
Host	Rat
Clonality	Monoclonal
Clone	5A1-1422
Isotype	IgG2a
Target Name	ABCA1
Species	Mouse
Immunogen	ABCA1 transfected HeLa cells.
Conjugation	PE
Alternate Names	TGD; Cholesterol efflux regulatory protein; HDLDT1; ATP-binding cassette sub-family A member 1; ATP-binding cassette 1; ATP-binding cassette transporter 1; ABC-1; ABC1; CERP

Application Instructions

Application table	<table> <tr> <th>Application</th><th>Dilution</th></tr> <tr> <td>FACS</td><td>1:10 - 1:200</td></tr> </table>	Application	Dilution	FACS	1:10 - 1:200
Application	Dilution				
FACS	1:10 - 1:200				
Application Note	<p>FACS: Use 10 µl of the suggested working dilution to label 10⁶ cells in 100 µl.</p> <p>* The dilutions indicate recommended starting dilutions and the optimal dilutions or concentrations should be determined by the scientist.</p>				

Properties

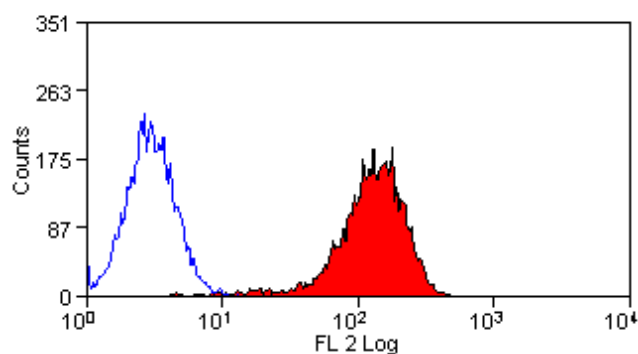
Form	Liquid
Purification	Purification with Protein G.
Buffer	PBS, 0.09% Sodium azide, 1% BSA and 5% Sucrose.
Preservative	0.09% Sodium azide
Stabilizer	1% BSA and 5% Sucrose

Storage instruction	Aliquot and store in the dark at 2-8°C. Keep protected from prolonged exposure to light. Avoid repeated freeze/thaw cycles. Suggest spin the vial prior to opening. The antibody solution should be gently mixed before use.
Note	For laboratory research only, not for drug, diagnostic or other use.

Bioinformation

Gene Symbol	ABCA1
Gene Full Name	ATP-binding cassette, sub-family A (ABC1), member 1
Background	The membrane-associated protein encoded by this gene is a member of the superfamily of ATP-binding cassette (ABC) transporters. ABC proteins transport various molecules across extra- and intracellular membranes. ABC genes are divided into seven distinct subfamilies (ABC1, MDR/TAP, MRP, ALD, OABP, GCN20, White). This protein is a member of the ABC1 subfamily. Members of the ABC1 subfamily comprise the only major ABC subfamily found exclusively in multicellular eukaryotes. With cholesterol as its substrate, this protein functions as a cholesterol efflux pump in the cellular lipid removal pathway. Mutations in this gene have been associated with Tangier's disease and familial high-density lipoprotein deficiency. [provided by RefSeq, Jul 2008]
Function	cAMP-dependent and sulfonyleurea-sensitive anion transporter. Key gatekeeper influencing intracellular cholesterol transport. [UniProt]
Calculated Mw	254 kDa
PTM	Phosphorylation on Ser-2054 regulates phospholipid efflux. Palmitoylation by DHHC8 is essential for membrane localization. [UniProt]

Images



ARG23549 anti-ABCA1 antibody [5A1-1422] (PE) FACS image

Flow Cytometry: pCPT-cAMP stimulated RAW264.7 cells stained with ARG23549 anti-ABCA1 antibody [5A1-1422] (PE).