

ARG23482 anti-CD2 antibody [CC42] (FITC)

Package: 50 tests
Store at: 4°C

Summary

Product Description	FITC-conjugated Mouse Monoclonal antibody [CC42] recognizes CD2 Mouse anti Bovine CD2, clone CC42, recognizes the bovine homologue of human CD2. Clone CC42 inhibits rosetting with SRBC and stains cells in primary and secondary lymphoid organs in patterns consistent with those seen by human CD2 monoclonal antibodies.
Tested Reactivity	Bov, Goat
Tested Application	FACS
Host	Mouse
Clonality	Monoclonal
Clone	CC42
Isotype	IgG1
Target Name	CD2
Species	Bovine
Conjugation	FITC
Alternate Names	T-cell surface antigen T11/Leu-5; LFA-3 receptor; T-cell surface antigen CD2; SRBC; Erythrocyte receptor; CD antigen CD2; T11; Rosette receptor; LFA-2

Application Instructions

Application table	Application	Dilution
	FACS	Neat - 1:10
Application Note	FACS: Use 10 µl of the suggested working dilution to label 10 ⁶ cells in 100 µl. * The dilutions indicate recommended starting dilutions and the optimal dilutions or concentrations should be determined by the scientist.	

Properties

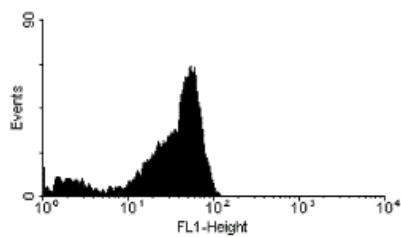
Form	Liquid
Purification	Purification with Protein G.
Buffer	PBS, 0.09% Sodium azide and 1% BSA.
Preservative	0.09% Sodium azide
Stabilizer	1% BSA
Concentration	0.1 mg/ml
Storage instruction	Aliquot and store in the dark at 2-8°C. Keep protected from prolonged exposure to light. Avoid repeated freeze/thaw cycles. Suggest spin the vial prior to opening. The antibody solution should be gently mixed before use.
Note	For laboratory research only, not for drug, diagnostic or other use.

Gene Symbol	CD2
Gene Full Name	CD2 molecule
Background	CD2 is a surface antigen of the human T-lymphocyte lineage that is expressed on all peripheral blood T cells (summarized by Sewell et al., 1986 [PubMed 3490670]). It is one of the earliest T-cell markers, being present on more than 95% of thymocytes; it is also found on some natural killer cells but not on B lymphocytes. Monoclonal antibodies directed against CD2 inhibit the formation of rosettes with sheep erythrocytes, indicating that CD2 is the erythrocyte receptor or is closely associated with it.[supplied by OMIM, Jul 2010]
Function	CD2 interacts with lymphocyte function-associated antigen (LFA-3) and CD48/BCM1 to mediate adhesion between T-cells and other cell types. CD2 is implicated in the triggering of T-cells, the cytoplasmic domain is implicated in the signaling function. [UniProt]
Calculated Mw	39 kDa

Images

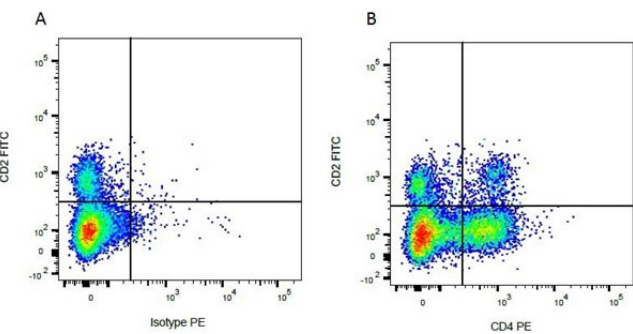
ARG23482 anti-CD2 antibody [CC42] (FITC) FACS image

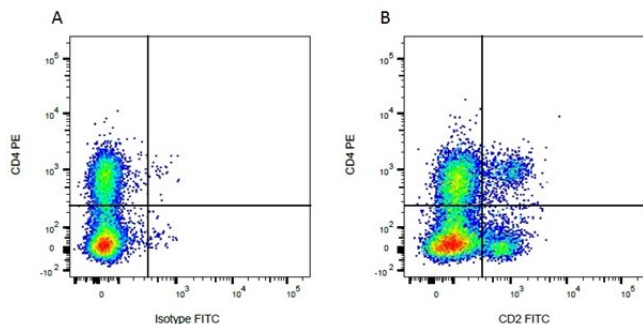
Flow Cytometry: Bovine peripheral blood lymphocytes stained with ARG23482 anti-CD2 antibody [CC42] (FITC).



ARG23482 anti-CD2 antibody [CC42] (FITC) FACS image

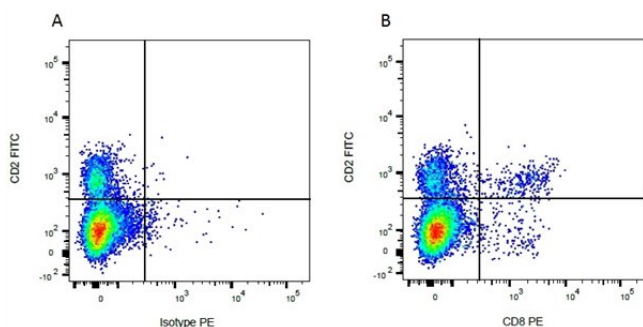
Flow Cytometry: Figure A. ARG23482 anti-CD2 antibody [CC42] (FITC) and RPE conjugated Mouse IgG2a isotype control. Figure B. ARG23482 anti-CD2 antibody [CC42] (FITC) and RPE conjugated Mouse anti Bovine CD4. All experiments performed on red cell lysed Bovine blood gated on mononuclear cells.





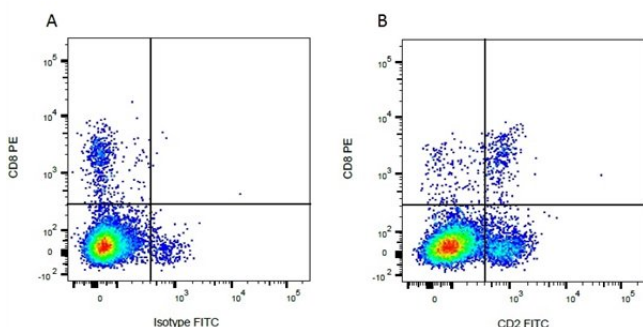
ARG23482 anti-CD2 antibody [CC42] (FITC) FACS image

Flow Cytometry: Figure A. RPE conjugated Mouse anti Bovine CD4 and FITC conjugated Mouse IgG1 isotype control. Figure B. RPE conjugated Mouse anti Bovine CD4 and ARG23482 anti-CD2 antibody [CC42] (FITC). All experiments performed on red cell lysed Bovine blood gated on mononuclear cells.



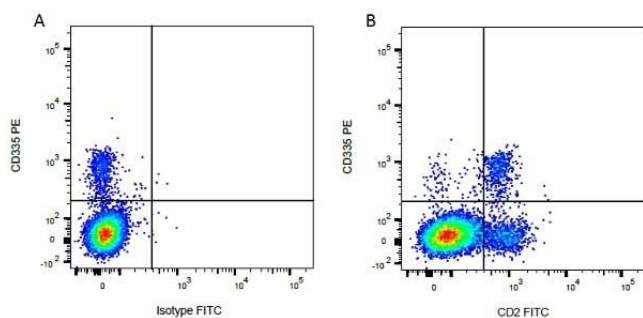
ARG23482 anti-CD2 antibody [CC42] (FITC) FACS image

Flow Cytometry: Figure A. ARG23482 anti-CD2 antibody [CC42] (FITC) and RPE conjugated Mouse IgG2a isotype control. Figure B. ARG23482 anti-CD2 antibody [CC42] (FITC) and RPE conjugated Mouse anti Bovine CD8. All experiments performed on red cell lysed Bovine blood gated on mononuclear cells.



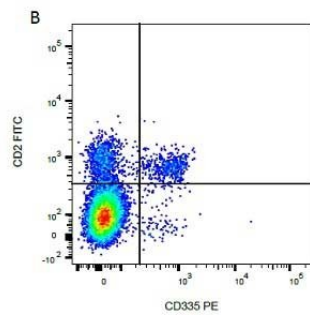
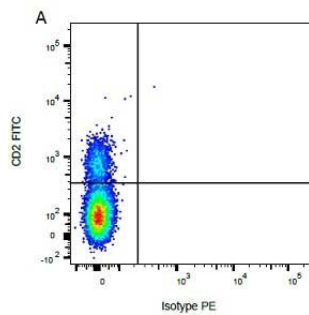
ARG23482 anti-CD2 antibody [CC42] (FITC) FACS image

Flow Cytometry: Figure A. RPE conjugated Mouse anti Bovine CD8 and FITC conjugated Mouse IgG1 isotype control. Figure B. RPE conjugated Mouse anti Bovine CD4 and ARG23482 anti-CD2 antibody [CC42] (FITC). All experiments performed on red cell lysed Bovine blood gated on mononuclear cells.



ARG23482 anti-CD2 antibody [CC42] (FITC) FACS image

Flow Cytometry: Figure A. RPE conjugated Mouse anti Bovine CD335 and FITC conjugated Mouse IgG1 isotype control. Figure B. RPE conjugated Mouse anti Bovine CD335 and ARG23482 anti-CD2 antibody [CC42] (FITC). All experiments performed on red cell lysed Bovine blood gated on mononuclear cells.



ARG23482 anti-CD2 antibody [CC42] (FITC) FACS image

Flow Cytometry: Figure A. ARG23482 anti-CD2 antibody [CC42] (FITC) and RPE conjugated Mouse IgG1 isotype control. Figure B. ARG23482 anti-CD2 antibody [CC42] (FITC) and RPE conjugated Mouse anti Bovine CD335. All experiments performed on red cell lysed Bovine blood gated on mononuclear cells.