

## ARG23415 anti-CD25 antibody [PC61.5.3] (PE)

Package: 250 µl  
Store at: 4°C

### Summary

Product Description	PE-conjugated Rat Monoclonal antibody [PC61.5.3] recognizes CD25 Rat anti Mouse CD25 antibody, clone PC61.5.3 reacts with the low affinity alpha chain of the interleukin-2 receptor present on activated T and B cells in mice. Rat anti Mouse CD25 antibody, clone PC61.5.3 is reported to inhibit IL-2 binding and IL-2 dependent proliferation.
Tested Reactivity	Ms
Tested Application	FACS
Host	Rat
Clonality	Monoclonal
Clone	PC61.5.3
Isotype	IgG1
Target Name	CD25
Species	Mouse
Immunogen	B6.1 CTL cell line.
Conjugation	PE
Alternate Names	IL-2-RA; IL-2 receptor subunit alpha; CD25; TCGFR; TAC antigen; IL2R; CD antigen CD25; Interleukin-2 receptor subunit alpha; IL-2R subunit alpha; p55; IL2-RA; IDDM10

### Application Instructions

Application table	Application	Dilution
	FACS	Assay-dependent

**Application Note** FACS: Use 10 µl of the suggested working dilution to label 10<sup>6</sup> cells in 100 µl.  
\* The dilutions indicate recommended starting dilutions and the optimal dilutions or concentrations should be determined by the scientist.

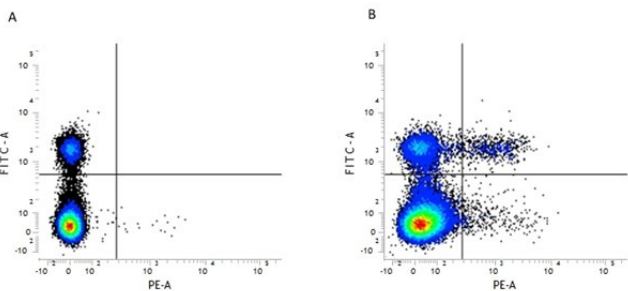
### Properties

Form	Liquid
Purification	Purification with Protein G.
Buffer	PBS, 0.02% Sodium azide and 0.5% BSA.
Preservative	0.02% Sodium azide
Stabilizer	0.5% BSA
Concentration	0.1 mg/ml
Storage instruction	Aliquot and store in the dark at 2-8°C. Keep protected from prolonged exposure to light. Avoid repeated freeze/thaw cycles. Suggest spin the vial prior to opening. The antibody solution should be gently mixed before use.

Bioinformation

Gene Symbol	IL2RA
Gene Full Name	interleukin 2 receptor, alpha
Background	The interleukin 2 (IL2) receptor alpha (IL2RA) and beta (IL2RB) chains, together with the common gamma chain (IL2RG), constitute the high-affinity IL2 receptor. Homodimeric alpha chains (IL2RA) result in low-affinity receptor, while homodimeric beta (IL2RB) chains produce a medium-affinity receptor. Normally an integral-membrane protein, soluble IL2RA has been isolated and determined to result from extracellular proteolysis. Alternately-spliced IL2RA mRNAs have been isolated, but the significance of each is presently unknown. Mutations in this gene are associated with interleukin 2 receptor alpha deficiency.[provided by RefSeq, Nov 2009]
Function	Receptor for interleukin-2. [UniProt]
Research Area	Immune System antibody; Pre-B Cell Marker antibody
Calculated Mw	31 kDa

Images



ARG23415 anti-CD25 antibody [PC61.5.3] (PE) FACS image

Flow Cytometry: Figure A. FITC conjugated Rat anti Mouse CD4 and PE-conjugated Rat IgG1 isotype control. Figure B. FITC conjugated Rat anti Mouse CD4 and ARG23415 anti-CD25 antibody [PC61.5.3] (PE). All experiments performed on Murine splenocytes.