

## ARG23403 anti-CD4 antibody [CVS4] (FITC)

Package: 50 µg  
Store at: 4°C

### Summary

Product Description	FITC-conjugated Mouse Monoclonal antibody [CVS4] recognizes CD4 Mouse anti Horse CD4 antibody, clone CVS4 recognizes Equine CD4, a ~58 kDa cell surface glycoprotein that is primarily expressed on a subpopulation of T lymphocytes. As in humans, equine CD4 expression is mutually exclusive with CD8 expression on mature T-cells. A study undertaken using Mouse anti Horse CD4, clone CVS4 to identify CD4 on several wild african equid species indicates that the CVS4 clone recognizes Somali wild ass ( <i>Equus asinus</i> ) but not Grévy's zebra ( <i>E. grevyi</i> ) or Hartmann's Mountain Zebra ( <i>E. zebra</i> ).
Tested Reactivity	Hrs
Tested Application	FACS
Host	Mouse
Clonality	Monoclonal
Clone	CVS4
Isotype	IgG1
Target Name	CD4
Species	Horse
Immunogen	Equine thymocytes.
Conjugation	FITC
Alternate Names	CD4mut; CD antigen CD4; T-cell surface glycoprotein CD4; T-cell surface antigen T4/Leu-3

### Application Instructions

Application table	<table> <tr> <th>Application</th><th>Dilution</th></tr> <tr> <td>FACS</td><td>1:25 - 1:200</td></tr> </table>	Application	Dilution	FACS	1:25 - 1:200
Application	Dilution				
FACS	1:25 - 1:200				
Application Note	<p>FACS: Use 10 µl of the suggested working dilution to label 10<sup>6</sup> cells in 100 µl.</p> <p>* The dilutions indicate recommended starting dilutions and the optimal dilutions or concentrations should be determined by the scientist.</p>				

### Properties

Form	Liquid
Purification	Purification with Protein A.
Buffer	PBS, 0.09% Sodium azide and 1% BSA.
Preservative	0.09% Sodium azide
Stabilizer	1% BSA
Concentration	0.1 mg/ml
Storage instruction	Aliquot and store in the dark at 2-8°C. Keep protected from prolonged exposure to light. Avoid

repeated freeze/thaw cycles. Suggest spin the vial prior to opening. The antibody solution should be gently mixed before use.

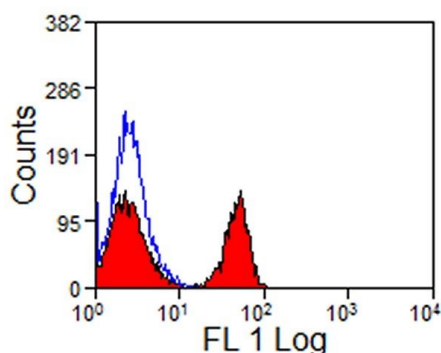
Note

For laboratory research only, not for drug, diagnostic or other use.

## Bioinformation

Gene Symbol	CD4
Gene Full Name	CD4 molecule
Background	CD4 is a membrane glycoprotein of T lymphocytes that interacts with major histocompatibility complex class II antigens and is also a receptor for the human immunodeficiency virus. This gene is expressed not only in T lymphocytes, but also in B cells, macrophages, and granulocytes. It is also expressed in specific regions of the brain. The protein functions to initiate or augment the early phase of T-cell activation, and may function as an important mediator of indirect neuronal damage in infectious and immune-mediated diseases of the central nervous system. Multiple alternatively spliced transcript variants encoding different isoforms have been identified in this gene. [provided by RefSeq, Aug 2010]
Function	CD4 is an integral membrane glycoprotein that plays an essential role in the immune response and serves multiple functions in responses against both external and internal offenses. In T-cells, functions primarily as a coreceptor for MHC class II molecule:peptide complex. The antigens presented by class II peptides are derived from extracellular proteins while class I peptides are derived from cytosolic proteins. Interacts simultaneously with the T-cell receptor (TCR) and the MHC class II presented by antigen presenting cells (APCs). In turn, recruits the Src kinase LCK to the vicinity of the TCR-CD3 complex. LCK then initiates different intracellular signaling pathways by phosphorylating various substrates ultimately leading to lymphokine production, motility, adhesion and activation of T-helper cells. In other cells such as macrophages or NK cells, plays a role in differentiation/activation, cytokine expression and cell migration in a TCR/LCK-independent pathway. Participates in the development of T-helper cells in the thymus and triggers the differentiation of monocytes into functional mature macrophages. [UniProt]
Highlight	Related products: <a href="#">CD4 antibodies</a> ; <a href="#">CD4 ELISA Kits</a> ; <a href="#">CD4 Duos / Panels</a> ; <a href="#">Anti-Mouse IgG secondary antibodies</a> ; Related news: <a href="#">New antibody panels and duos for Tumor immune microenvironment</a> <a href="#">Tumor-Infiltrating Lymphocytes (TILs)</a>
Research Area	Developmental Biology antibody; Immune System antibody; Regulatory T cells Study antibody; T-cell infiltration Study antibody; Tumor-infiltrating Lymphocyte Study antibody
Calculated Mw	51 kDa
PTM	Palmitoylation and association with LCK contribute to the enrichment of CD4 in lipid rafts. [UniProt]

## Images



ARG23403 anti-CD4 antibody [CVS4] (FITC) FACS image

Flow Cytometry: Horse peripheral blood lymphocytes stained with ARG23403 anti-CD4 antibody [CVS4] (FITC).