

ARG23247 anti-Pan B-Cell antibody [CVS36] (FITC)

Package: 50 µg
Store at: 4°C

Summary

Product Description	FITC-conjugated Mouse Monoclonal antibody [CVS36] recognizes Pan B-Cell Mouse anti Horse Pan B-Cells, clone CVS36 is a monoclonal antibody directed against equine Ig light chains. Characterization studies demonstrated that clone CVS36 bound 100% of CD5-ve peripheral blood lymphocytes and recognized all equine B-cells (Lunn et al. 1998) As the antigen recognized by clone CVS36 appears to be present on the surface of all equine B-cells it is therefore is a reagent that can be used as a pan B-cell marker for domestic horses (Breathnach et al. 2005). Specific anti equine reagents have yet to be fully characterized for the typically recognized B-cell makers such as CD19, CD20, CD21, CD22 and CD79. While testing has demonstrated the cross reactivity of some monoclonal B-cell markers raised against other species with equine B cell, such as the Mouse anti Human CD79a antibody, (clone HM57), an overview of which may be found in the report of the second equine leucocyte antigen workshop (Lunn et al. 1998). With specificity for equine Ig light chains, clone CVS36 may be used to detect all equine immunoglobulin classes and subclasses in ELISA applications (Lunn et al. 1998).
Tested Reactivity	Hrs
Tested Application	FACS
Host	Mouse
Clonality	Monoclonal
Clone	CVS36
Isotype	IgG1
Target Name	Pan B-Cell
Species	Horse
Immunogen	Purified Equine Ig.
Conjugation	FITC

Application Instructions

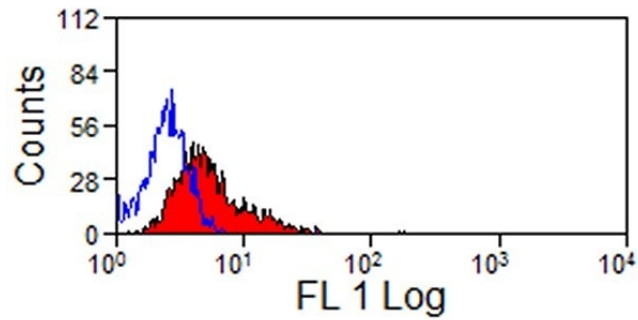
Application table	<table> <tr> <th>Application</th><th>Dilution</th></tr> <tr> <td>FACS</td><td>1:25 - 1:200</td></tr> </table>	Application	Dilution	FACS	1:25 - 1:200
Application	Dilution				
FACS	1:25 - 1:200				
Application Note	<p>FACS: Use 10 µl of the suggested working dilution to label 10⁶ cells in 100 µl.</p> <p>* The dilutions indicate recommended starting dilutions and the optimal dilutions or concentrations should be determined by the scientist.</p>				

Properties

Form	Liquid
Purification	Purification with Protein G.
Buffer	PBS, 0.09% Sodium azide and 1% BSA.
Preservative	0.09% Sodium azide

Stabilizer	1% BSA
Concentration	0.1 mg/ml
Storage instruction	Aliquot and store in the dark at 2-8°C. Keep protected from prolonged exposure to light. Avoid repeated freeze/thaw cycles. Suggest spin the vial prior to opening. The antibody solution should be gently mixed before use.
Note	For laboratory research only, not for drug, diagnostic or other use.

Images



ARG23247 anti-Pan B-Cell antibody [CVS36] (FITC) FACS image

Flow Cytometry: Horse peripheral blood lymphocytes stained with ARG23247 anti-Pan B-Cell antibody [CVS36] (FITC).