

## ARG23041 anti-CD41 antibody [PM6/248] (PE)

Package: 50 tests  
Store at: 4°C

### Summary

Product Description	PE-conjugated Mouse Monoclonal antibody [PM6/248] recognizes CD41 Mouse anti Human CD41 antibody, clone PM6/248 recognizes the human CD41 cell surface antigen, a 140kD glycoprotein expressed by platelets and megakaryocytes. CD41 is also known as platelet glycoprotein IIb, and functions as a receptor for fibrinogen, fibronectin and vWF. It has not been established if clone PM6/248 recognizes free CD41 or CD41 only when complexed with CD61. However, antibody binding is reduced in the presence of EDTA suggesting that the epitope recognized is dependent upon an intact CD41/61 complex.
Tested Reactivity	Hu, Bb
Tested Application	FACS
Host	Mouse
Clonality	Monoclonal
Clone	PM6/248
Isotype	IgG1
Target Name	CD41
Species	Human
Immunogen	Human platelet plasma membranes.
Conjugation	PE
Alternate Names	GTA; GT; GPalpha IIb; PPP1R93; CD41; BDPLT2; BDPLT16; GP2B; Integrin alpha-IIb; GPIIb; Platelet membrane glycoprotein IIb; HPA3; CD antigen CD41; CD41B

### Application Instructions

Application table	<table> <tr> <th>Application</th><th>Dilution</th></tr> <tr> <td>FACS</td><td>Assay-dependent</td></tr> </table>	Application	Dilution	FACS	Assay-dependent
Application	Dilution				
FACS	Assay-dependent				
Application Note	<p>FACS: Use 10 µl of the suggested working dilution to label 10<sup>6</sup> cells or 100 µl whole blood</p> <p>* The dilutions indicate recommended starting dilutions and the optimal dilutions or concentrations should be determined by the scientist.</p>				

### Properties

Form	Liquid
Purification	Purification with Protein A.
Buffer	PBS, 0.09% Sodium azide, 1% BSA and 5% Sucrose
Preservative	0.09% Sodium azide
Stabilizer	1% BSA and 5% Sucrose
Storage instruction	Aliquot and store in the dark at 2-8°C. Keep protected from prolonged exposure to light. Avoid repeated freeze/thaw cycles. Suggest spin the vial prior to opening. The antibody solution should be

gently mixed before use.

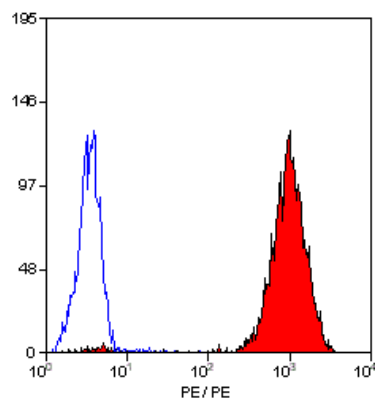
Note

For laboratory research only, not for drug, diagnostic or other use.

## Bioinformation

Gene Symbol	ITGA2B
Gene Full Name	integrin, alpha 2b (platelet glycoprotein IIb of IIb/IIIa complex, antigen CD41)
Background	ITGA2B encodes integrin alpha chain 2b. Integrins are heterodimeric integral membrane proteins composed of an alpha chain and a beta chain. Alpha chain 2b undergoes post-translational cleavage to yield disulfide-linked light and heavy chains that join with beta 3 to form a fibronectin receptor expressed in platelets that plays a crucial role in coagulation. Mutations that interfere with this role result in thrombasthenia. In addition to adhesion, integrins are known to participate in cell-surface mediated signalling. [provided by RefSeq, Jul 2008]
Function	Integrin alpha-IIb/beta-3 is a receptor for fibronectin, fibrinogen, plasminogen, prothrombin, thrombospondin and vitronectin. It recognizes the sequence R-G-D in a wide array of ligands. It recognizes the sequence H-H-L-G-G-A-K-Q-A-G-D-V in fibrinogen gamma chain. Following activation integrin alpha-IIb/beta-3 brings about platelet/platelet interaction through binding of soluble fibrinogen. This step leads to rapid platelet aggregation which physically plugs ruptured endothelial cell surface. [UniProt]
Calculated Mw	113 kDa

## Images



ARG23041 anti-CD41 antibody [PM6/248] (PE) FACS image

Flow Cytometry: Human peripheral blood platelets stained with ARG23041 anti-CD41 antibody [PM6/248] (PE).