

ARG23024 anti-CD25 antibody [OX-39] (PE)

Package: 50 tests
Store at: 4°C

Summary

Product Description	PE-conjugated Mouse Monoclonal antibody [OX-39] recognizes CD25 Mouse anti Rat CD25 antibody, clone OX-39 recognizes the alpha chain of rat CD25, otherwise known as IL-2 receptor alpha, a ~55 kDa type I membrane glycoprotein, expressed by activated T cells but not resting lymphocytes. CD25 is also expressed by dendritic cells found in the thymus medulla. Mouse anti Rat CD25 antibody, clone OX-39 has been described reacting with paraffin-embedded material following PLP fixation (periodate-lysine-paraformaldehyde). Mouse anti Rat CD25 antibody, clone OX-39 has been shown to weakly inhibit the binding of IL-2 to Con-A stimulated spleen blasts (Paterson et al. 1987).
Tested Reactivity	Rat
Tested Application	FACS
Host	Mouse
Clonality	Monoclonal
Clone	OX-39
Isotype	IgG1
Target Name	CD25
Species	Rat
Immunogen	Stimulated Rat T cells
Conjugation	PE
Alternate Names	IL-2-RA; IL-2 receptor subunit alpha; CD25; TCGFR; TAC antigen; IL2R; CD antigen CD25; Interleukin-2 receptor subunit alpha; IL-2R subunit alpha; p55; IL2-RA; IDDM10

Application Instructions

Application table	<table> <tr> <th>Application</th><th>Dilution</th></tr> <tr> <td>FACS</td><td>1:10 - 1:50</td></tr> </table>	Application	Dilution	FACS	1:10 - 1:50
Application	Dilution				
FACS	1:10 - 1:50				
Application Note	<p>FACS: Use 10 µl of the suggested working dilution to label 10⁶ cells in 100 µl.</p> <p>* The dilutions indicate recommended starting dilutions and the optimal dilutions or concentrations should be determined by the scientist.</p>				

Properties

Form	Liquid
Purification	Purification with Protein G.
Buffer	PBS, 0.09% Sodium azide, 1% BSA and 5% Sucrose
Preservative	0.09% Sodium azide
Stabilizer	1% BSA and 5% Sucrose

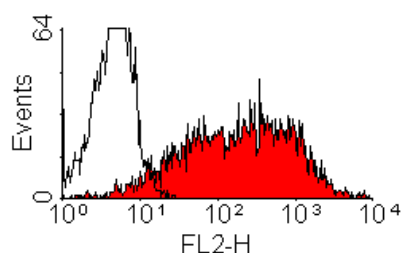
Storage instruction	Aliquot and store in the dark at 2-8°C. Keep protected from prolonged exposure to light. Avoid repeated freeze/thaw cycles. Suggest spin the vial prior to opening. The antibody solution should be gently mixed before use.
Note	For laboratory research only, not for drug, diagnostic or other use.

Bioinformation

Gene Symbol	IL2ra
Gene Full Name	interleukin 2 receptor, alpha
Background	The interleukin 2 (IL2) receptor alpha (IL2RA) and beta (IL2RB) chains, together with the common gamma chain (IL2RG), constitute the high-affinity IL2 receptor. Homodimeric alpha chains (IL2RA) result in low-affinity receptor, while homodimeric beta (IL2RB) chains produce a medium-affinity receptor. Normally an integral-membrane protein, soluble IL2RA has been isolated and determined to result from extracellular proteolysis. Alternately-spliced IL2RA mRNAs have been isolated, but the significance of each is presently unknown. Mutations in this gene are associated with interleukin 2 receptor alpha deficiency.[provided by RefSeq, Nov 2009]
Function	Receptor for interleukin-2. [UniProt]
Research Area	Immune System antibody; Pre-B Cell Marker antibody
Calculated Mw	31 kDa

Images

ARG23024 anti-CD25 antibody [OX-39] (PE) FACS image



Flow Cytometry: ConA activated rat splenic lymphocytes stained with ARG23024 anti-CD25 antibody [OX-39] (PE).