

ARG23023 anti-CD25 antibody [OX-39]

Package: 100 µg
Store at: -20°C

Summary

Product Description	Mouse Monoclonal antibody [OX-39] recognizes CD25 Mouse anti Rat CD25 antibody, clone OX-39 recognizes the alpha chain of rat CD25, otherwise known as IL-2 receptor alpha, a ~55 kDa type I membrane glycoprotein, expressed by activated T cells but not resting lymphocytes. CD25 is also expressed by dendritic cells found in the thymus medulla. Mouse anti Rat CD25 antibody, clone OX-39 has been described reacting with paraffin-embedded material following PLP fixation (periodate-lysine-paraformaldehyde). Mouse anti Rat CD25 antibody, clone OX-39 has been shown to weakly inhibit the binding of IL-2 to Con-A stimulated spleen blasts (Paterson et al. 1987).
Tested Reactivity	Rat
Tested Application	ELISA, FACS, IHC-Fr, IHC-P, IP
Host	Mouse
Clonality	Monoclonal
Clone	OX-39
Isotype	IgG1
Target Name	CD25
Species	Rat
Immunogen	Stimulated Rat T cells
Conjugation	Un-conjugated
Alternate Names	IL-2-RA; IL-2 receptor subunit alpha; CD25; TCGFR; TAC antigen; IL2R; CD antigen CD25; Interleukin-2 receptor subunit alpha; IL-2R subunit alpha; p55; IL2-RA; IDDM10

Application Instructions

Application table	<table> <tr> <th>Application</th><th>Dilution</th></tr> <tr> <td>ELISA</td><td>Assay-dependent</td></tr> <tr> <td>FACS</td><td>1:10 - 1:50</td></tr> <tr> <td>IHC-Fr</td><td>Assay-dependent</td></tr> <tr> <td>IHC-P</td><td>Assay-dependent</td></tr> <tr> <td>IP</td><td>Assay-dependent</td></tr> </table>	Application	Dilution	ELISA	Assay-dependent	FACS	1:10 - 1:50	IHC-Fr	Assay-dependent	IHC-P	Assay-dependent	IP	Assay-dependent
Application	Dilution												
ELISA	Assay-dependent												
FACS	1:10 - 1:50												
IHC-Fr	Assay-dependent												
IHC-P	Assay-dependent												
IP	Assay-dependent												
Application Note	<p>IHC-P: PLP fixation is recommended.</p> <p>FACS: Use 10 µl of the suggested working dilution to label 10⁶ cells in 100 µl.</p> <p>* The dilutions indicate recommended starting dilutions and the optimal dilutions or concentrations should be determined by the scientist.</p>												

Properties

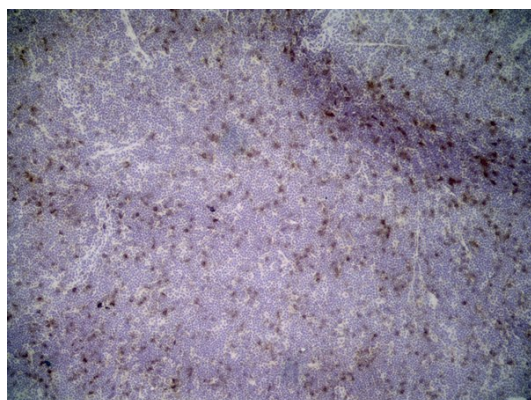
Form	Liquid
------	--------

Purification	Purification with Protein G.
Buffer	PBS and 0.09% Sodium azide
Preservative	0.09% Sodium azide
Concentration	1 mg/ml
Storage instruction	For continuous use, store undiluted antibody at 2-8°C for up to a week. For long-term storage, aliquot and store at -20°C or below. Storage in frost free freezers is not recommended. Avoid repeated freeze/thaw cycles. Suggest spin the vial prior to opening. The antibody solution should be gently mixed before use.
Note	For laboratory research only, not for drug, diagnostic or other use.

Bioinformation

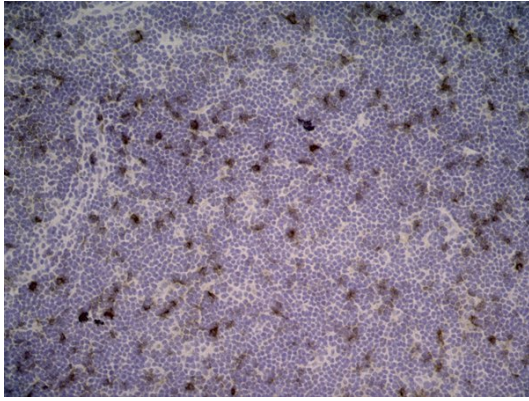
Gene Symbol	IL2ra
Gene Full Name	interleukin 2 receptor, alpha
Background	The interleukin 2 (IL2) receptor alpha (IL2RA) and beta (IL2RB) chains, together with the common gamma chain (IL2RG), constitute the high-affinity IL2 receptor. Homodimeric alpha chains (IL2RA) result in low-affinity receptor, while homodimeric beta (IL2RB) chains produce a medium-affinity receptor. Normally an integral-membrane protein, soluble IL2RA has been isolated and determined to result from extracellular proteolysis. Alternately-spliced IL2RA mRNAs have been isolated, but the significance of each is presently unknown. Mutations in this gene are associated with interleukin 2 receptor alpha deficiency.[provided by RefSeq, Nov 2009]
Function	Receptor for interleukin-2. [UniProt]
Research Area	Immune System antibody; Pre-B Cell Marker antibody
Calculated Mw	31 kDa

Images



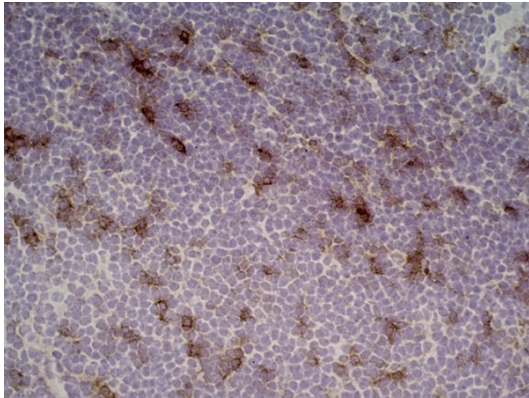
ARG23023 anti-CD25 antibody [OX-39] IHC-Fr image

Immunohistochemistry: Rat lymph node cryosection stained with ARG23023 anti-CD25 antibody [OX-39] followed by HRP-conjugated Goat anti Mouse IgG1 as a detection reagent. (Low power).



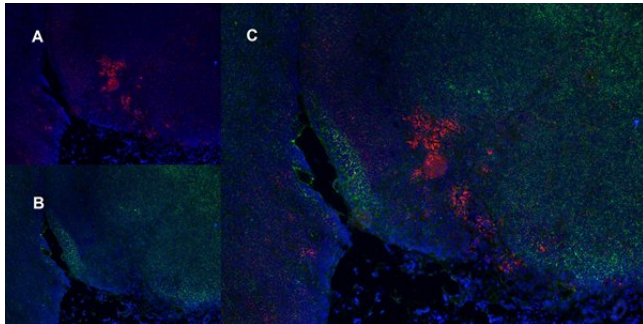
ARG23023 anti-CD25 antibody [OX-39] IHC-Fr image

Immunohistochemistry: Rat lymph node cryosection stained with ARG23023 anti-CD25 antibody [OX-39] followed by HRP-conjugated Goat anti Mouse IgG1 as a detection reagent. (Medium power).



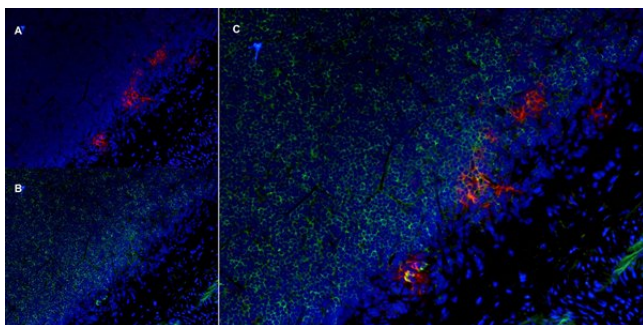
ARG23023 anti-CD25 antibody [OX-39] IHC-Fr image

Immunohistochemistry: Rat lymph node cryosection stained with ARG23023 anti-CD25 antibody [OX-39] followed by HRP-conjugated Goat anti Mouse IgG1 as a detection reagent. (High power).



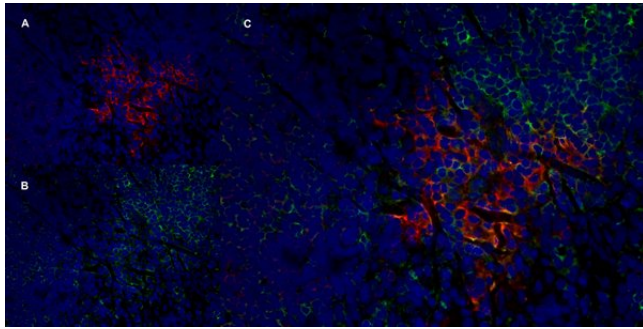
ARG23023 anti-CD25 antibody [OX-39] IHC-Fr image

Immunohistochemistry: Rat lymph node cryosection stained with ARG23023 anti-CD25 antibody [OX-39], red in A and Mouse anti Rat CD8, green in B. C is the merged image with nuclei counterstained blue using DAPI. (Low power).



ARG23023 anti-CD25 antibody [OX-39] IHC-Fr image

Immunohistochemistry: Rat lymph node cryosection stained with ARG23023 anti-CD25 antibody [OX-39], red in A and Mouse anti Rat CD8, green in B. C is the merged image with nuclei counterstained blue using DAPI. (Medium power).



ARG23023 anti-CD25 antibody [OX-39] IHC-Fr image

Immunohistochemistry: Rat lymph node cryosection stained with ARG23023 anti-CD25 antibody [OX-39], red in A and Mouse anti Rat CD8, green in B. C is the merged image with nuclei counterstained blue using DAPI. (High power).