

ARG23009 anti-CD25 antibody [IL-A111] (FITC)

Package: 50 µg
Store at: 4°C

Summary

Product Description	FITC-conjugated Mouse Monoclonal antibody [IL-A111] recognizes CD25 Mouse anti Bovine CD25 antibody, clone IL-A111 recognizes the bovine CD25 cell surface antigen, a ~55 kDa glycoprotein also known as Interleukin-2 receptor alpha chain. Bovine CD25 is expressed by activated T cells. Clone IL-A111 is reported to block the IL-2 driven proliferation of Con A-induced blast cells/ bovine lymphocytes (Naessens et al. 1992).
Tested Reactivity	Bov, Sheep
Tested Application	FACS
Host	Mouse
Clonality	Monoclonal
Clone	IL-A111
Isotype	IgG1
Target Name	CD25
Species	Bovine
Conjugation	FITC
Alternate Names	IL-2-RA; IL-2 receptor subunit alpha; CD25; TCGFR; TAC antigen; IL2R; CD antigen CD25; Interleukin-2 receptor subunit alpha; IL-2R subunit alpha; p55; IL2-RA; IDDM10

Application Instructions

Application table	<table> <tr> <th>Application</th><th>Dilution</th></tr> <tr> <td>FACS</td><td>1:50 - 1:100</td></tr> </table>	Application	Dilution	FACS	1:50 - 1:100
Application	Dilution				
FACS	1:50 - 1:100				
Application Note	<p>FACS: Use 10 µl of the suggested working dilution to label 10⁶ cells in 100 µl</p> <p>* The dilutions indicate recommended starting dilutions and the optimal dilutions or concentrations should be determined by the scientist.</p>				

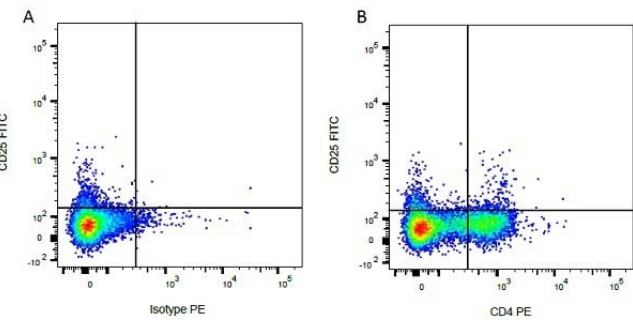
Properties

Form	Liquid
Purification	Purification with Protein A.
Buffer	PBS, 0.09% Sodium azide and 1% BSA
Preservative	0.09% Sodium azide
Stabilizer	1% BSA
Concentration	0.1 mg/ml
Storage instruction	Aliquot and store in the dark at 2-8°C. Keep protected from prolonged exposure to light. Avoid repeated freeze/thaw cycles. Suggest spin the vial prior to opening. The antibody solution should be gently mixed before use.

Bioinformation

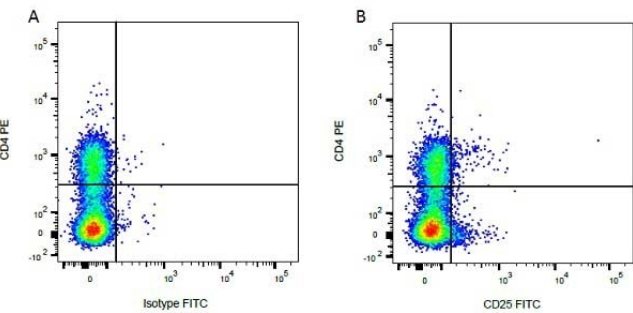
Gene Symbol	IL2RA
Gene Full Name	interleukin 2 receptor, alpha
Background	The interleukin 2 (IL2) receptor alpha (IL2RA) and beta (IL2RB) chains, together with the common gamma chain (IL2RG), constitute the high-affinity IL2 receptor. Homodimeric alpha chains (IL2RA) result in low-affinity receptor, while homodimeric beta (IL2RB) chains produce a medium-affinity receptor. Normally an integral-membrane protein, soluble IL2RA has been isolated and determined to result from extracellular proteolysis. Alternately-spliced IL2RA mRNAs have been isolated, but the significance of each is presently unknown. Mutations in this gene are associated with interleukin 2 receptor alpha deficiency.[provided by RefSeq, Nov 2009]
Function	Receptor for interleukin-2. [UniProt]
Research Area	Immune System antibody; Pre-B Cell Marker antibody
Calculated Mw	31 kDa

Images



ARG23009 anti-CD25 antibody [IL-A111] (FITC) FACS image

Flow Cytometry: Figure A. ARG23009 anti-CD25 antibody [IL-A111] (FITC) and RPE conjugated mouse IgG2a isotype control. Figure B. ARG23009 anti-CD25 antibody [IL-A111] (FITC) and RPE conjugated mouse anti bovine CD4. All experiments performed on red cell lysed bovine blood gated on mononuclear cells.



ARG23009 anti-CD25 antibody [IL-A111] (FITC) FACS image

Flow Cytometry: Figure A. RPE conjugated mouse anti bovine CD4 and FITC conjugated mouse IgG1 isotype control. Figure B. RPE conjugated mouse anti bovine CD4 and ARG23009 anti-CD25 antibody [IL-A111] (FITC). All experiments performed on red cell lysed bovine blood gated on mononuclear cells.