

## ARG22893 anti-CD62L / L-Selectin antibody [FMC46] (FITC)

Package: 50 µg  
Store at: 4°C

### Summary

Product Description	FITC-conjugated Mouse Monoclonal antibody [FMC46] recognizes CD62L / L-Selectin Mouse anti Human CD62L antibody, clone FMC46 recognizes human CD62L, also known as L-selectin, a 74-95 kDa member of the selectin family of adhesion receptors, which acts as a ligand for both CD62P (P-selectin) and CD62E (E-selectin). Human CD62L is constitutively expressed on most leucocytes including monocytes, granulocytes, lymphocytes, NK cells, bone marrow myeloid progenitor cells and on a subset of thymocytes. CD62L plays an important role in leucocyte tethering and rolling on the endothelial cell surface and for the homing of naïve lymphocytes to lymph nodes and Peyer's patches via HEV. Neutrophils require a constant supply of this molecule on the cell surface for migration into peripheral tissues and adhesion to activated endothelium at sites of inflammation, where CD62L is rapidly shed as soluble L-selectin, but surface expression still remains. The expression of CD62L is down regulated on lymphocytes and neutrophils by PMA stimulation.
Tested Reactivity	Hu, Bov, Dog, R. Mk
Tested Application	FACS
Host	Mouse
Clonality	Monoclonal
Clone	FMC46
Isotype	IgG2b
Target Name	CD62L / L-Selectin
Species	Human
Immunogen	PHA stimulated lymphoblasts
Conjugation	FITC
Alternate Names	Leukocyte surface antigen Leu-8; Leukocyte adhesion molecule 1; CD antigen CD62L; PLNHR; LSEL; CD62L; Leukocyte-endothelial cell adhesion molecule 1; L-selectin; LAM1; LNHR; TQ1; CD62 antigen-like family member L; gp90-MEL; Lymph node homing receptor; LYAM1; LECAM1; LEU8; LAM-1

### Application Instructions

Application table	<table> <tr> <th>Application</th><th>Dilution</th></tr> <tr> <td>FACS</td><td>Neat</td></tr> </table>	Application	Dilution	FACS	Neat
Application	Dilution				
FACS	Neat				
Application Note	<p>FACS: Use 10 µl of the suggested working dilution to label 10<sup>6</sup> cells in 100 µl.</p> <p>* The dilutions indicate recommended starting dilutions and the optimal dilutions or concentrations should be determined by the scientist.</p>				

### Properties

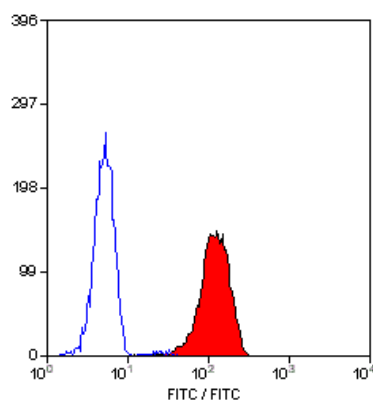
Form	Liquid
Purification	Purification with Protein G.
Buffer	PBS, 0.09% Sodium azide and 1% BSA

Preservative	0.09% Sodium azide
Stabilizer	1% BSA
Concentration	0.1 mg/ml
Storage instruction	Aliquot and store in the dark at 2-8°C. Keep protected from prolonged exposure to light. Avoid repeated freeze/thaw cycles. Suggest spin the vial prior to opening. The antibody solution should be gently mixed before use.
Note	For laboratory research only, not for drug, diagnostic or other use.

## Bioinformation

Gene Symbol	SELL
Gene Full Name	selectin L
Background	This gene encodes a cell surface adhesion molecule that belongs to a family of adhesion/homing receptors. The encoded protein contains a C-type lectin-like domain, a calcium-binding epidermal growth factor-like domain, and two short complement-like repeats. The gene product is required for binding and subsequent rolling of leucocytes on endothelial cells, facilitating their migration into secondary lymphoid organs and inflammation sites. Single-nucleotide polymorphisms in this gene have been associated with various diseases including immunoglobulin A nephropathy. Alternatively spliced transcript variants have been found for this gene. [provided by RefSeq, Oct 2009]
Function	Cell surface adhesion protein. Mediates the adherence of lymphocytes to endothelial cells of high endothelial venules in peripheral lymph nodes. Promotes initial tethering and rolling of leukocytes in endothelia. [UniProt]
Calculated Mw	42 kDa

## Images



ARG22893 anti-CD62L / L-Selectin antibody [FMC46] (FITC) FACS image

Flow Cytometry: Human peripheral blood granulocytes stained with ARG22893 anti-CD62L / L-Selectin antibody [FMC46] (FITC).