

ARG22829 anti-CD25 antibody [K231.3B2]

Package: 50 µg

Store at: -20°C

Summary

Product Description	<p>Mouse Monoclonal antibody [K231.3B2] recognizes CD25</p> <p>Mouse anti Pig CD25, clone K231.3B2 recognizes porcine CD25, the alpha chain of the interleukin 2 receptor (IL-2Rα), also known as the low affinity Interleukin 2 receptor. The IL-2 receptor exists in three forms, the high affinity heterodimer, the intermediate affinity β monomer and the low affinity α monomer configurations. Clone K231.3B2 was clustered as CD25 at the First International Workshop to Define Swine Cluster of Differentiation (CD) Antigens (Lunney et al. 1994). Mouse anti pig CD25, clone K231.3B2 immunoprecipitates a protein of ~65-70 kDa from activated lymphocyte preparations (Bailey et al. 1992). CD25 is a 270 amino acid single pass type I transmembrane glycoprotein containing 2 Sushi domains. Low expression of CD25 is seen on resting peripheral blood mononuclear cells, rapidly up-regulated following stimulation by concanavalin A and phorbol myristate acetate, indicative of its role as an activation antigen (Bullido et al. 1999).</p>
Tested Reactivity	Pig
Tested Application	FACS, IHC-Fr
Host	Mouse
Clonality	Monoclonal
Clone	K231.3B2
Isotype	IgG1
Target Name	CD25
Species	Pig
Immunogen	Con A activated Porcine peripheral blood lymphocytes.
Conjugation	Un-conjugated
Alternate Names	IL-2-RA; IL-2 receptor subunit alpha; CD25; TCGFR; TAC antigen; IL2R; CD antigen CD25; Interleukin-2 receptor subunit alpha; IL-2R subunit alpha; p55; IL2-RA; IDDM10

Application Instructions

Application table	Application	Dilution
	FACS	1:25 - 1:200
	IHC-Fr	Assay-dependent
Application Note	<p>FACS: Use 10 µl of the suggested working dilution to label 10⁶ cells in 100 µl</p> <p>* The dilutions indicate recommended starting dilutions and the optimal dilutions or concentrations should be determined by the scientist.</p>	

Properties

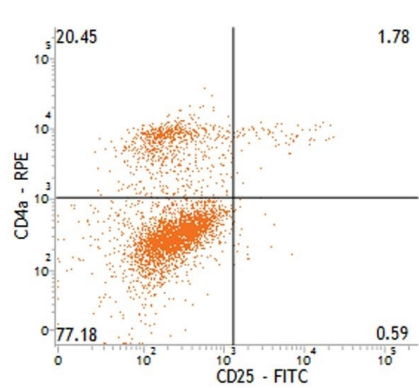
Form	Liquid
Purification	Purification with Protein A.
Buffer	PBS and 0.09% Sodium azide

Preservative	0.09% Sodium azide
Concentration	1 mg/ml
Storage instruction	For continuous use, store undiluted antibody at 2-8°C for up to a week. For long-term storage, aliquot and store at -20°C or below. Storage in frost free freezers is not recommended. Avoid repeated freeze/thaw cycles. Suggest spin the vial prior to opening. The antibody solution should be gently mixed before use.
Note	For laboratory research only, not for drug, diagnostic or other use.

Bioinformation

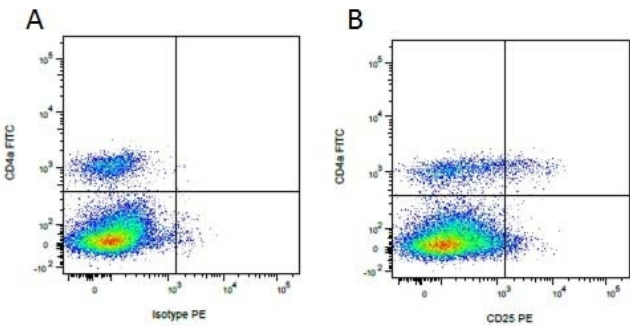
Gene Symbol	IL2RA
Gene Full Name	interleukin 2 receptor, alpha
Background	The interleukin 2 (IL2) receptor alpha (IL2RA) and beta (IL2RB) chains, together with the common gamma chain (IL2RG), constitute the high-affinity IL2 receptor. Homodimeric alpha chains (IL2RA) result in low-affinity receptor, while homodimeric beta (IL2RB) chains produce a medium-affinity receptor. Normally an integral-membrane protein, soluble IL2RA has been isolated and determined to result from extracellular proteolysis. Alternately-spliced IL2RA mRNAs have been isolated, but the significance of each is presently unknown. Mutations in this gene are associated with interleukin 2 receptor alpha deficiency.[provided by RefSeq, Nov 2009]
Function	Receptor for interleukin-2. [UniProt]
Research Area	Immune System antibody; Pre-B Cell Marker antibody
Calculated Mw	31 kDa

Images



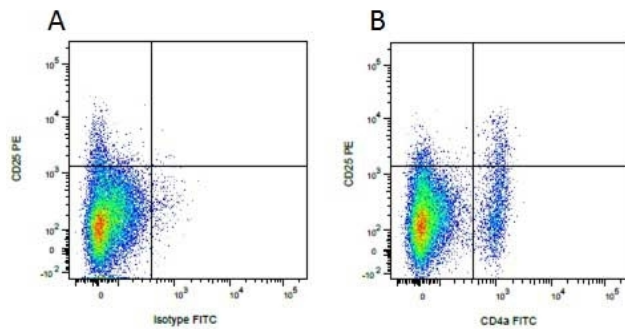
ARG22829 anti-CD25 antibody [K231.3B2] FACS image

Flow Cytometry: Porcine peripheral blood lymphocytes stained with ARG22829 anti-CD25 antibody [K231.3B2] followed by FITC conjugated Goat anti Mouse IgG antibody, dual stained with RPE conjugated Mouse anti Pig CD4a antibody, clone MIL17. Numbers indicate the percent cells in each quadrant.



ARG22829 anti-CD25 antibody [K231.3B2] FACS image

Flow Cytometry: Figure A. FITC conjugated mouse anti porcine CD4a and purified mouse IgG1 isotype control detected with goat anti mouse IgG1PE. Figure B. FITC conjugated mouse anti porcine CD4a and ARG22829 anti-CD25 antibody [K231.3B2] detected with goat anti mouse IgG1 (PE). All experiments performed on red cell lysed porcine blood gated on mononuclear cells.



ARG22829 anti-CD25 antibody [K231.3B2] FACS image

Flow Cytometry: Figure A. ARG22829 anti-CD25 antibody [K231.3B2] detected with goat anti mouse IgG1 (PE) and mouse IgG2b FITC isotype control. Figure B. ARG22829 anti-CD25 antibody [K231.3B2] detected with goat anti mouse IgG1 (PE) and mouse anti porcine CD4a FITC. All experiments performed on red cell lysed porcine blood gated on mononuclear cells.