

## ARG22826 anti-CD52 antibody [YTH34.5] (PE)

Package: 50 tests  
Store at: 4°C

### Summary

Product Description	PE-conjugated Rat Monoclonal antibody [YTH34.5] recognizes CD52 Rat anti Human CD52 antibody, clone YTH34.5 reacts with the human CD52 antigen, also known as CAMPATH-1. The CD52 antigen is a remarkably small but heavily glycosylated peptide attached to the cell surface membrane via a GPI link (Xia et al. 1991). The apparent molecular mass of the native antigen on SDS-PAGE is 25-29kDa, considerably reduced following N-glycanase treatment (Rowan et al. 1998). CD52 is expressed at high density by lymphocytes, monocytes, eosinophils, thymocytes and macrophages. It is expressed by most lymphoid derived malignancies, although expression on myeloma cells is variable. Humanised versions of CAMPATH-1 specific antibodies are currently in clinical trials for the treatment of a range of lymphoid malignancies (Dearden et al. 2002; Pettitt et al. 2012).
Tested Reactivity	Hu, R. Mk
Tested Application	FACS
Host	Rat
Clonality	Monoclonal
Clone	YTH34.5
Isotype	IgG2b
Target Name	CD52
Species	Human
Immunogen	Human lymphocytes.
Conjugation	PE
Alternate Names	He5; CAMPATH-1 antigen; Human epididymis-specific protein 5; Cambridge pathology 1 antigen; CDw52; Epididymal secretory protein E5; CDW52; CD antigen CD52

### Application Instructions

Application table	<table> <tr> <th>Application</th><th>Dilution</th></tr> <tr> <td>FACS</td><td>1:20</td></tr> </table>	Application	Dilution	FACS	1:20
Application	Dilution				
FACS	1:20				
Application Note	<p>FACS: use 10 µl of the suggested working dilution to label 10<sup>6</sup> cells in 100 µl.</p> <p>* The dilutions indicate recommended starting dilutions and the optimal dilutions or concentrations should be determined by the scientist.</p>				

### Properties

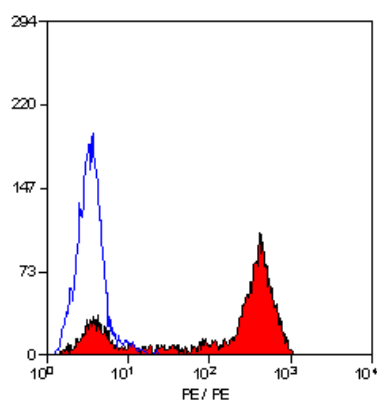
Form	Liquid
Purification	Purification with Protein A.
Buffer	PBS, 0.09% Sodium azide, 1% BSA and 5% Sucrose
Preservative	0.09% Sodium azide
Stabilizer	1% BSA and 5% Sucrose

Storage instruction	Aliquot and store in the dark at 2-8°C. Keep protected from prolonged exposure to light. Avoid repeated freeze/thaw cycles. Suggest spin the vial prior to opening. The antibody solution should be gently mixed before use.
Note	For laboratory research only, not for drug, diagnostic or other use.

## Bioinformation

Gene Symbol	CD52
Gene Full Name	CD52 molecule
Function	May play a role in carrying and orienting carbohydrate, as well as having a more specific role. [UniProt]
Calculated Mw	7 kDa

## Images



ARG22826 anti-CD52 antibody [YTH34.5] (PE) FACS image

Flow Cytometry: Human peripheral blood lymphocytes stained with ARG22826 anti-CD52 antibody [YTH34.5] (PE).