

## ARG22712 anti-MHC Class I (Monomorphic) antibody [CVS22] (FITC)

Package: 50 µg  
Store at: 4°C

### Summary

|                     |   |
|---------------------|---|
| Product Description | FITC-conjugated Mouse Monoclonal antibody [CVS22] recognizes MHC Class I (Monomorphic)<br>This antibody recognizes monomorphic equine MHC Class I and was classified at the International Equine Leucocyte Antigen Workshop. MHC class I is expressed by all nucleated cells.<br>The major histocompatibility complex (MHC) is a cluster of genes that are important in the immune response to infections. In horses, this complex is referred to as the equine leukocyte antigen (ELA) region. |
| Tested Reactivity   | Hrs   |
| Tested Application  | FACS  |
| Host                | Mouse   |
| Clonality           | Monoclonal  |
| Clone               | CVS22   |
| Isotype             | IgG2a   |
| Target Name         | MHC Class I (Monomorphic)   |
| Species             | Horse   |
| Immunogen           | Equine leucocytes   |
| Conjugation         | FITC  |

### Application Instructions

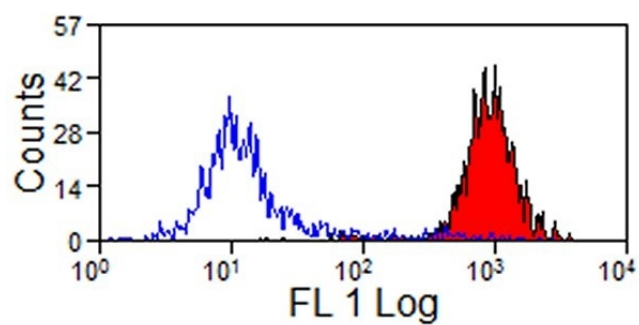
| Application table | <table> <tr> <th>Application</th><th>Dilution</th></tr> <tr> <td>FACS</td><td>Neat - 1:10</td></tr> </table>  | Application | Dilution | FACS | Neat - 1:10 |
|-------------------|---|-------------|----------|------|-------------|
| Application       | Dilution  |             |          |      |             |
| FACS              | Neat - 1:10   |             |          |      |             |
| Application Note  | <p>FACS: Use 10 µl of the suggested working dilution to label 10<sup>6</sup> cells in 100 µl.</p> <p>* The dilutions indicate recommended starting dilutions and the optimal dilutions or concentrations should be determined by the scientist.</p> |             |          |      |             |

### Properties

|                     |  |
|---------------------|--|
| Form                | Liquid   |
| Purification        | Purification with Protein G.   |
| Buffer              | PBS, 0.09% Sodium azide and 1% BSA.  |
| Preservative        | 0.09% Sodium azide   |
| Stabilizer          | 1% BSA   |
| Concentration       | 0.1 mg/ml  |
| Storage instruction | Aliquot and store in the dark at 2-8°C. Keep protected from prolonged exposure to light. Avoid repeated freeze/thaw cycles. Suggest spin the vial prior to opening. The antibody solution should be gently mixed before use. |

## Images

---



ARG22712 anti-MHC Class I (Monomorphic) antibody [CVS22] (FITC)  
FACS image

Flow Cytometry: Equine peripheral blood lymphocytes stained with  
ARG22712 anti-MHC Class I (Monomorphic) antibody [CVS22] (FITC).