

ARG22631 anti-Malondialdehyde antibody [11E3]

Package: 50 µg
Store at: -20°C

Summary

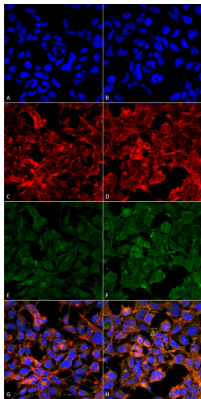
Product Description	Mouse Monoclonal antibody [11E3] recognizes Malondialdehyde
Tested Reactivity	Other
Tested Application	ICC/IF, WB
Specificity	Specific for Malondialdehyde conjugated proteins. Does not detect free Malondialdehyde. Does not cross-react with Acrolein, Crotonaldehyde, Hexanoyl Lysine, 4-Hydroxy-2-hexenal or 4-Hydroxy nonenal.
Host	Mouse
Clonality	Monoclonal
Clone	11E3
Isotype	IgG1
Target Name	Malondialdehyde
Species	Others
Immunogen	Synthetic Malondialdehyde modified KLH.
Conjugation	Un-conjugated

Application Instructions

Application table	Application	Dilution
	ICC/IF	1:50
	WB	1:1000
Application Note	* The dilutions indicate recommended starting dilutions and the optimal dilutions or concentrations should be determined by the scientist.	

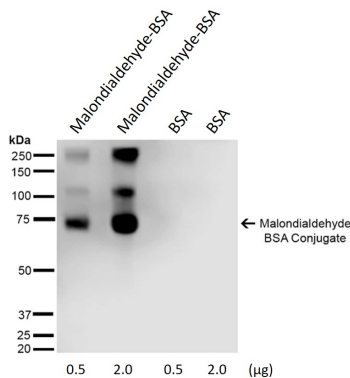
Properties

Form	Liquid
Purification	Purification with Protein G.
Buffer	PBS (pH 7.4), 0.9% Sodium azide and 50% Glycerol.
Preservative	0.9% Sodium azide
Stabilizer	50% Glycerol
Storage instruction	For continuous use, store undiluted antibody at 2-8°C for up to a week. For long-term storage, aliquot and store at -20°C. Storage in frost free freezers is not recommended. Avoid repeated freeze/thaw cycles. Suggest spin the vial prior to opening. The antibody solution should be gently mixed before use.
Note	For laboratory research only, not for drug, diagnostic or other use.



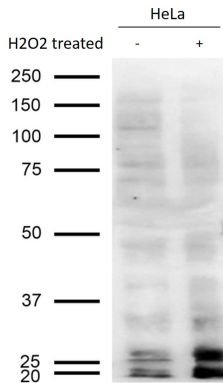
ARG22631 anti-Malondialdehyde antibody [11E3] ICC/IF image

Immunofluorescence: 5% Formaldehyde fixed (5 min) HEK293 cells stained with ARG22631 anti-Malondialdehyde antibody [11E3] at 1:50 for 30 - 60 min at RT. Secondary Antibody: Goat anti-Mouse (Alexa Fluor 488) at 1:1500 for 30 - 60 min at RT. Counterstain: Phalloidin Alexa Fluor 633 F-Actin stain; DAPI (blue) nuclear stain. (A,C,E,G) Untreated. (B,D,F,H) Cells cultured overnight with 50 μM H2O2. (A,B) DAPI (blue) nuclear stain. (C,D) Phalloidin Alex Fluor 633 F-Actin stain. (E,F) Primary antibody. (G,H) Composite. .



ARG22631 anti-Malondialdehyde antibody [11E3] WB image

Western blot: Malondialdehyde-BSA (0.5 μg), Malondialdehyde-BSA (2.0 μg), BSA (0.5 μg) and BSA (2.0 μg) stained with ARG22631 anti-Malondialdehyde antibody [11E3] at 1:1000 for 2 hours at RT.



ARG22631 anti-Malondialdehyde antibody [11E3] WB image

Western blot: 12 μg of HeLa cell lysate and H2O2 treated HeLa cell lysate stained with ARG22631 anti-Malondialdehyde antibody [11E3] at 1:1000 for 2 hours at RT.