

ARG22590 anti-CLEC2 / CLEC1B antibody [17D9] (PE)

Package: 50 tests
Store at: 4°C

Summary

Product Description	PE-conjugated Rat Monoclonal antibody [17D9] recognizes CLEC2 / CLEC1B This antibody recognizes mouse C-type lectin domain family 1 member B, also known as CLEC2 or CLEC1B. CLEC2 acts as a receptor for rhodocytin, a platelet-aggregating protein found in snake venom. CLEC2 expression is not restricted to platelets and also acts as an activation receptor on neutrophils.
Tested Reactivity	Ms
Tested Application	FACS
Host	Rat
Clonality	Monoclonal
Clone	17D9
Isotype	IgG2b
Target Name	CLEC2 / CLEC1B
Species	Mouse
Immunogen	RBL-2H3 cells stably expressing HA-tagged mouse CLEC2.
Conjugation	PE
Alternate Names	CLEC2; C-type lectin domain family 1 member B; CLEC2B; PRO1384; C-type lectin-like receptor 2; CLEC-2; 1810061I13Rik; QDED721

Application Instructions

Application table	Application	Dilution
	FACS	Neat

Application Note
FACS: Use 10ul of the suggested working dilution to label 10⁶ cells in 100ul.
* The dilutions indicate recommended starting dilutions and the optimal dilutions or concentrations should be determined by the scientist.

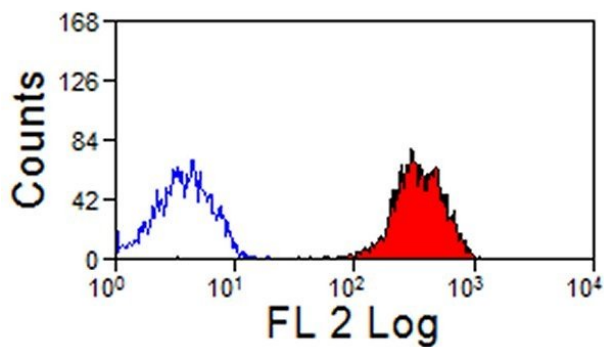
Properties

Form	Liquid
Purification	Purification with Protein G.
Buffer	PBS, 0.09% Sodium azide, 1% BSA and 5% Sucrose.
Preservative	0.09% Sodium azide
Stabilizer	1% BSA and 5% Sucrose
Storage instruction	Aliquot and store in the dark at 2-8°C. Keep protected from prolonged exposure to light. Avoid repeated freeze/thaw cycles. Suggest spin the vial prior to opening. The antibody solution should be gently mixed before use.
Note	For laboratory research only, not for drug, diagnostic or other use.

Bioinformation

Gene Symbol	Clec1b
Gene Full Name	C-type lectin domain family 1, member b
Background	Natural killer (NK) cells express multiple calcium-dependent (C-type) lectin-like receptors, such as CD94 (KLRD1; MIM 602894) and NKG2D (KLRC4; MIM 602893), that interact with major histocompatibility complex class I molecules and either inhibit or activate cytotoxicity and cytokine secretion. CLEC2 is a C-type lectin-like receptor expressed in myeloid cells and NK cells (Colonna et al., 2000 [PubMed 10671229]).[supplied by OMIM, Jan 2011]
Calculated Mw	27 kDa
PTM	Glycosylated. Phosphorylated on tyrosine residue in response to rhodocytin binding.

Images



ARG22590 anti-CLEC2 / CLEC1B antibody [17D9] (PE) FACS image

Flow Cytometry: Mouse peripheral blood platelets stained with ARG22590 anti-CLEC2 / CLEC1B antibody [17D9] (PE).