

## ARG22476 anti-EMR1 F4 / 80 antibody [Cl:A3-1]

Package: 100 µg  
Store at: -20°C

### Summary

Product Description	Rat Monoclonal antibody [Cl:A3-1] recognizes EMR1 F4 / 80
Tested Reactivity	Ms, Rat
Tested Application	EM, FACS, ICC/IF, IHC-Fr, IHC-P, IHC-R, IP, RIA, WB
Specificity	EMR1 F4/80 antibody, clone Cl:A3-1, is the best macrophage and microglial marker. It recognises the murine F4/80 antigen, a 160 kD cell surface glycoprotein, member of the EGF-TM7 family.
Host	Rat
Clonality	Monoclonal
Clone	Cl:A3-1
Isotype	IgG2b
Target Name	EMR1 F4 / 80
Species	Mouse
Immunogen	Thioglycollate stimulated peritoneal macrophages from C57BL/6 mice.
Conjugation	Un-conjugated
Alternate Names	EGF-like module-containing mucin-like hormone receptor-like 1; EMR1 hormone receptor; EMR1; Adhesion G protein-coupled receptor E1; EGF-like module receptor 1; TM7LN3

### Application Instructions

Application table	Application	Dilution
	EM	5 - 10 µg/ml
	FACS	1:50 - 1:100 (Use 10 µl to label 10 <sup>6</sup> cells in 100 µl)
	ICC/IF	5 - 10 µg/ml
	IHC-Fr	5 - 10 µg/ml
	IHC-P	5 - 10 µg/ml
	IHC-R	Assay-dependent
	IP	Assay-dependent
	RIA	Assay-dependent
	WB	1:500 - 1:1000

**Application Note** IHC-P: Antigen Retrieval: Proteinase K is recommended for tissues fixed for less than 24 hours. Citrate buffer pH 6.0 is recommended for tissues fixed for more than 24 hours.

\* The dilutions indicate recommended starting dilutions and the optimal dilutions or concentrations should be determined by the scientist.

## Properties

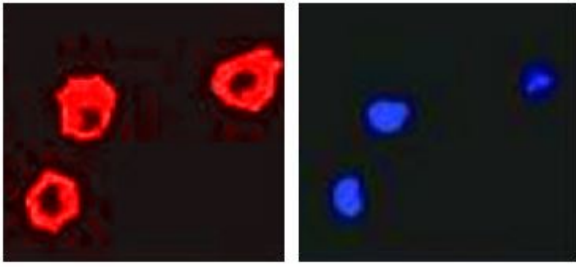
---

Form	Liquid
Purification	Purification with Protein G.
Buffer	PBS and 0.09% Sodium azide.
Preservative	0.09% Sodium azide
Concentration	1 mg/ml
Storage instruction	For continuous use, store undiluted antibody at 2-8°C for up to a week. For long-term storage, aliquot and store at -20°C or below. Storage in frost free freezers is not recommended. Avoid repeated freeze/thaw cycles. Suggest spin the vial prior to opening. The antibody solution should be gently mixed before use.
Note	For laboratory research only, not for drug, diagnostic or other use.

## Bioinformation

---

Gene Symbol	Adgre1
Gene Full Name	adhesion G protein-coupled receptor E1
Background	EMR1 F4/80 has a domain resembling seven transmembrane G protein-coupled hormone receptors (7TM receptors) at its C-terminus. The N-terminus of the encoded protein has six EGF-like modules, separated from the transmembrane segments by a serine/threonine-rich domain, a feature reminiscent of mucin-like, single-span, integral membrane glycoproteins with adhesive properties. Multiple alternatively spliced transcript variants encoding different isoforms have been found for this gene. [provided by RefSeq, Jan 2012]
Function	EMR1 F4/80: Orphan receptor involved in cell adhesion and probably in cell-cell interactions specifically involving cells of the immune system. May play a role in regulatory T-cells (Treg) development. [UniProt]
Highlight	Related Antibody Duos and Panels: <a href="#">ARG30326 Inflammatory Cell Antibody Panel (for mouse)</a> Related products: <a href="#">EMR1 F4/80 antibodies</a> ; <a href="#">EMR1 F4/80 Duos / Panels</a> ; <a href="#">Anti-Rat IgG secondary antibodies</a> ; Related news: <a href="#">Exploring Antiviral Immune Response</a>
Research Area	Mouse Inflammatory Cell Marker antibody; Macrophage Marker antibody
Calculated Mw	98 kDa

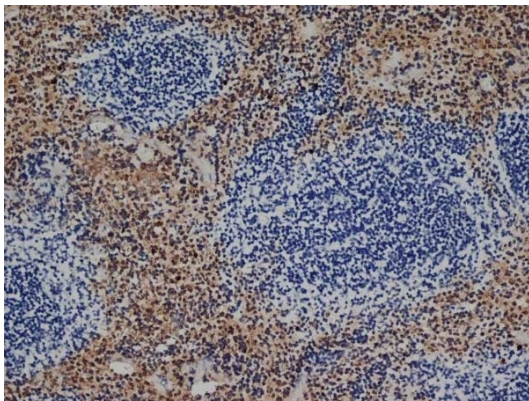


EMR1 F4/80

DAPI

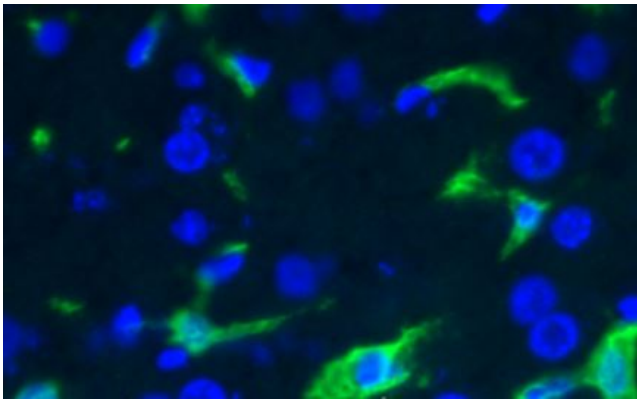
ARG22476 anti-EMR1 F4/80 antibody [Cl:A3-1] ICC/IF image

Immunofluorescence: Rat tumor macrophages stained with ARG22476 anti-EMR1 F4/80 antibody [Cl:A3-1].



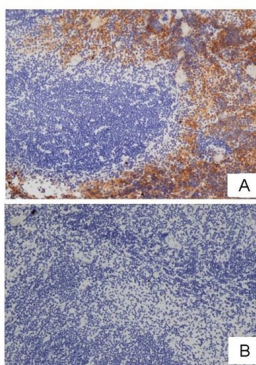
ARG22476 anti-EMR1 F4/80 antibody [Cl:A3-1] IHC-P image

Immunohistochemistry: Mouse spleen cryosection stained with ARG22476 anti-EMR1 F4/80 antibody [Cl:A3-1] at 1:100 dilution.



ARG22476 anti-EMR1 F4/80 antibody [Cl:A3-1] IHC-Fr image

Immunohistochemistry: Frozen section of Mouse liver tissue stained with ARG22476 anti-EMR1 F4/80 antibody [Cl:A3-1] at 1:100 dilution.



ARG22476 anti-EMR1 F4/80 antibody [Cl:A3-1] IHC-P image

Immunohistochemistry: A. Mouse spleen stained with ARG22476 anti-EMR1 F4/80 antibody [Cl:A3-1] at 1:100 dilution. B. Primary antibodies preincubated with 2 molar excess of Human anti Idiotypic.