

## ARG22471 anti-EMR1 F4 / 80 antibody [Cl:A3-1] (APC)

Package: 50 tests

Store at: 4°C

### Summary

Product Description	APC-conjugated Rat Monoclonal antibody [Cl:A3-1] recognizes EMR1 F4 / 80 This antibody recognizes the murine F4 / 80 antigen, a 160 kD cell surface glycoprotein, member of the EGF-TM7 family.
Tested Reactivity	Ms
Tested Application	FACS
Host	Rat
Clonality	Monoclonal
Clone	Cl:A3-1
Isotype	IgG2b
Target Name	EMR1 F4 / 80
Species	Mouse
Immunogen	Thioglycollate stimulated peritoneal macrophages from C57BL/6 mice.
Conjugation	APC
Alternate Names	EGF-like module-containing mucin-like hormone receptor-like 1; EMR1 hormone receptor; EMR1; Adhesion G protein-coupled receptor E1; EGF-like module receptor 1; TM7LN3

### Application Instructions

Application table	Application	Dilution
	FACS	Neat - 1:10
Application Note	FACS: Use 10ul of the suggested working dilution to label 10 <sup>6</sup> cells in 100ul * The dilutions indicate recommended starting dilutions and the optimal dilutions or concentrations should be determined by the scientist.	

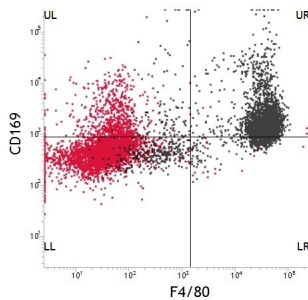
### Properties

Form	Liquid
Purification	Purification with Protein A.
Buffer	PBS, 0.09% Sodium azide, 1% BSA and 5% Sucrose.
Preservative	0.09% Sodium azide
Stabilizer	1% BSA and 5% Sucrose
Storage instruction	Aliquot and store in the dark at 2-8°C. Keep protected from prolonged exposure to light. Avoid repeated freeze/thaw cycles. Suggest spin the vial prior to opening. The antibody solution should be gently mixed before use.
Note	For laboratory research only, not for drug, diagnostic or other use.

## Bioinformation

Gene Symbol	Adgre1
Gene Full Name	adhesion G protein-coupled receptor E1
Background	EMR1 F4/80 has a domain resembling seven transmembrane G protein-coupled hormone receptors (7TM receptors) at its C-terminus. The N-terminus of the encoded protein has six EGF-like modules, separated from the transmembrane segments by a serine/threonine-rich domain, a feature reminiscent of mucin-like, single-span, integral membrane glycoproteins with adhesive properties. Multiple alternatively spliced transcript variants encoding different isoforms have been found for this gene. [provided by RefSeq, Jan 2012]
Function	EMR1 F4/80: Orphan receptor involved in cell adhesion and probably in cell-cell interactions specifically involving cells of the immune system. May play a role in regulatory T-cells (Treg) development. [UniProt]
Highlight	Related products: <a href="#">EMR1 F4/80 antibodies</a> ; <a href="#">EMR1 F4/80 Duos / Panels</a> ; <a href="#">Anti-Rat IgG secondary antibodies</a> ; Related news: <a href="#">Exploring Antiviral Immune Response</a>
Research Area	Mouse Inflammatory Cell Marker antibody; Macrophage Marker antibody
Calculated Mw	98 kDa

## Images



ARG22471 anti-EMR1 F4/80 antibody [Cl:A3-1] (APC) FACS image

Flow Cytometry: FSC/SSC gated Mouse peritoneal macrophages dual stained with ARG22471 anti-EMR1 F4/80 antibody [Cl:A3-1] (APC) at 1:5 dilution and anti-CD169 at a neat dilution. Isotype control pair in red.