

**ARG22372**  
**anti-CD206 / MMR antibody**Package: 50 µg  
Store at: -20°C

### Summary

Product Description	Rabbit Polyclonal antibody recognizes CD206 / MMR
Tested Reactivity	Hu, Ms, Rat, Pig
Tested Application	ICC/IF, IHC-P, WB
Host	Rabbit
Clonality	Polyclonal
Isotype	IgG
Target Name	CD206 / MMR
Species	Human
Immunogen	KLH-conjugated synthetic peptide from Human CD206 / MMR.
Conjugation	Un-conjugated
Alternate Names	CLEC13D; C-type lectin domain family 13 member D; Macrophage mannose receptor 1-like protein 1; C-type lectin domain family 13 member D-like; MMR; CLEC13DL; CD206; Macrophage mannose receptor 1; bA541I19.1; CD antigen CD206; MRC1L1

### Application Instructions

Application table	Application	Dilution
	ICC/IF	1:400
	IHC-P	1:100 - 1:500
	WB	1:300 - 1:1000

**Application Note** \* The dilutions indicate recommended starting dilutions and the optimal dilutions or concentrations should be determined by the scientist.

### Properties

Form	Liquid
Purification	Affinity purification with immunogen.
Buffer	PBS and 0.02% Sodium azide.
Preservative	0.02% Sodium azide
Concentration	0.5 mg/ml
Storage instruction	For continuous use, store undiluted antibody at 2-8°C for up to a week. For long-term storage, aliquot and store at -20°C or below. Storage in frost free freezers is not recommended. Avoid repeated freeze/thaw cycles. Suggest spin the vial prior to opening. The antibody solution should be gently mixed before use.
Note	For laboratory research only, not for drug, diagnostic or other use.

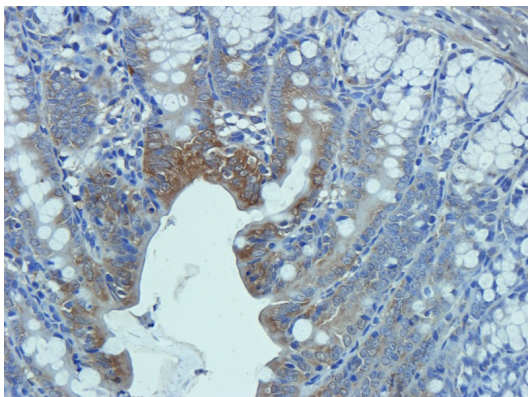
## Bioinformation

---

Database links	<a href="#">GeneID: 17533 Mouse</a> <a href="#">GeneID: 4360 Human</a> <a href="#">Swiss-port # P22897 Human</a> <a href="#">Swiss-port # Q61830 Mouse</a>
Gene Symbol	MRC1
Gene Full Name	mannose receptor, C type 1
Background	The recognition of complex carbohydrate structures on glycoproteins is an important part of several biological processes, including cell-cell recognition, serum glycoprotein turnover, and neutralization of pathogens. CD206 / MMR is a type I membrane receptor that mediates the endocytosis of glycoproteins by macrophages. The protein has been shown to bind high-mannose structures on the surface of potentially pathogenic viruses, bacteria, and fungi so that they can be neutralized by phagocytic engulfment. [provided by RefSeq, Sep 2015]
Function	CD206 / MMR mediates the endocytosis of glycoproteins by macrophages. Binds both sulfated and non-sulfated polysaccharide chains.  (Microbial infection) Acts as phagocytic receptor for bacteria, fungi and other pathogens.  (Microbial infection) Acts as a receptor for Dengue virus envelope protein E.  (Microbial infection) Interacts with Hepatitis B virus envelope protein. [UniProt]
Highlight	Related products: <a href="#">CD206 antibodies</a> ; <a href="#">CD206 ELISA Kits</a> ; <a href="#">CD206 Duos / Panels</a> ; <a href="#">Anti-Rabbit IgG secondary antibodies</a> ; Related news: <a href="#">Tumor-Infiltrating Lymphocytes (TILs)</a> <a href="#">New antibody panels and duos for Tumor immune microenvironment</a> <a href="#">Anti-SerpinB9 therapy, a new strategy for cancer therapy</a> <a href="#">RIP1 activation and pathogenesis of NASH</a>
Research Area	Immune System antibody; M1/M2/TAM Marker antibody; Macrophage Marker antibody; M2 Macrophage Marker antibody
Calculated Mw	166 kDa

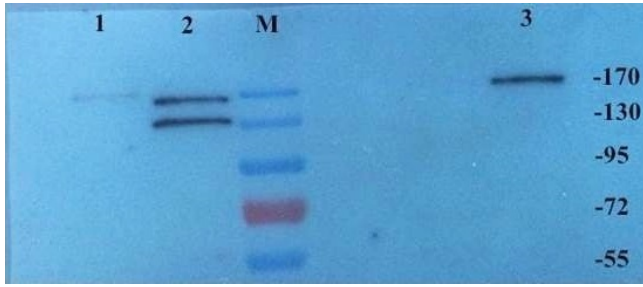
## Images

---



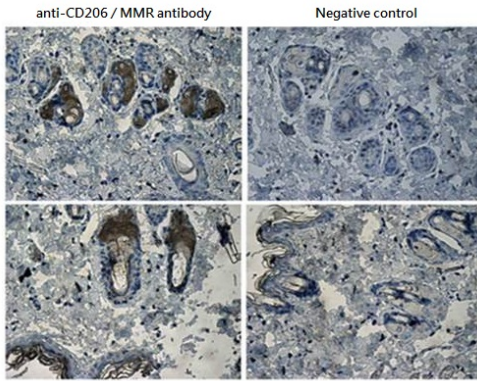
ARG22372 anti-CD206 / MMR antibody IHC-P image

Immunohistochemistry: Paraffin-embedded Rat colon tissue stained with ARG22372 anti-CD206 / MMR antibody at 5 µg/ml dilution.



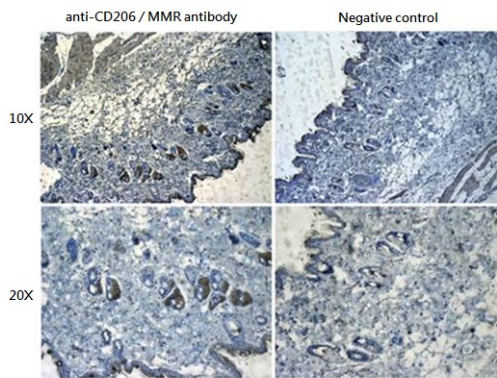
ARG22372 anti-CD206 / MMR antibody WB image

Western blot: 1) Rat brain, 2) Rat kidney, and 3) Mouse brain tissue stained with ARG22372 anti-CD206 / MMR antibody at 1:500 dilution.



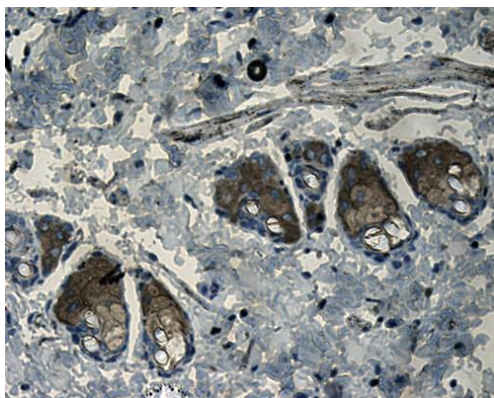
ARG22372 anti-CD206 / MMR antibody IHC-P image

Immunohistochemistry: Paraffin-embedded Rat skin tissue stained with ARG22372 anti-CD206 / MMR antibody at 1:200 dilution.



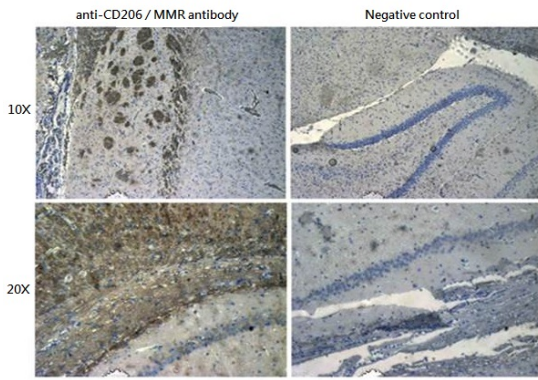
ARG22372 anti-CD206 / MMR antibody IHC-P image

Immunohistochemistry: Paraffin-embedded Rat skin tissue stained with ARG22372 anti-CD206 / MMR antibody at 1:100 dilution.



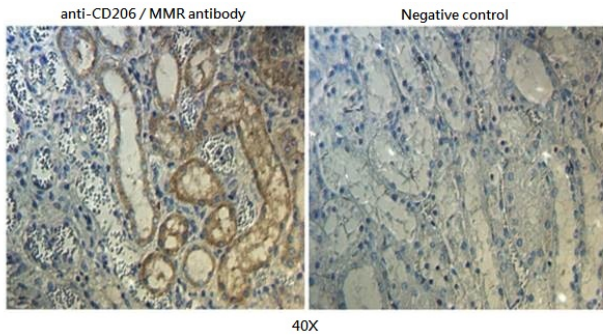
ARG22372 anti-CD206 / MMR antibody IHC-P image

Immunohistochemistry: Paraffin-embedded Rat kidney tissue stained with ARG22372 anti-CD206 / MMR antibody at 1:100 dilution.



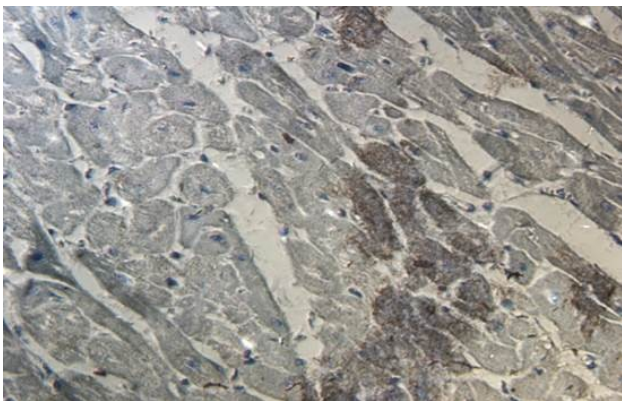
ARG22372 anti-CD206 / MMR antibody IHC-P image

Immunohistochemistry: Paraffin-embedded Rat brain tissue stained with ARG22372 anti-CD206 / MMR antibody at 1:200 dilution.



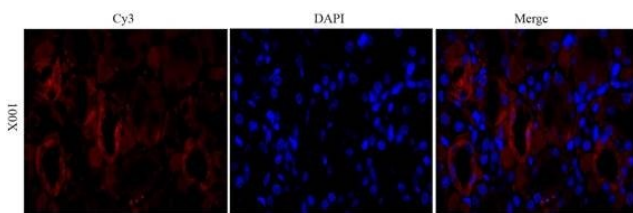
ARG22372 anti-CD206 / MMR antibody IHC-P image

Immunohistochemistry: Formalin-fixed and paraffin-embedded Pig kidney tissue stained with ARG22372 anti-CD206 / MMR antibody at 1:200 dilution.



ARG22372 anti-CD206 / MMR antibody IHC-P image

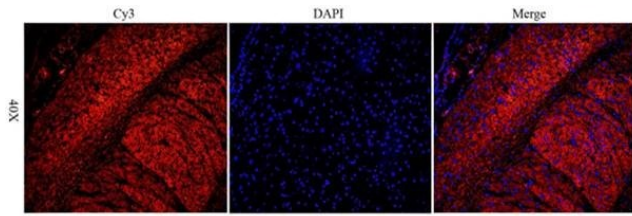
Immunohistochemistry: Paraffin-embedded Pig heart tissue stained with ARG22372 anti-CD206 / MMR antibody at 1:200 dilution.



ARG22372 anti-CD206 / MMR antibody IHC-P image

Immunohistochemistry: Paraffin-embedded Rat kidney tissue stained with ARG22372 anti-CD206 / MMR antibody at 1:200 dilution.





ARG22372 anti-CD206 / MMR antibody IHC-P image

Immunohistochemistry: Paraffin-embedded Rat brain tissue stained with ARG22372 anti-CD206 / MMR antibody at 1:100 dilution.

---