

ARG22351 Mouse anti-Chicken IgM antibody [M-1] (APC)

Package: 50 µg
Store at: 4°C

Summary

Product Description	APC-conjugated Mouse Monoclonal antibody [M-1] recognizes Chicken IgM
Tested Reactivity	Chk
Tested Application	FACS, FLISA, ICC/IF, IHC-Fr
Specificity	Chicken / Turkey IgM
Host	Mouse
Clonality	Monoclonal
Clone	M-1
Isotype	IgG2b, kappa
Target Name	IgM
Species	Chicken
Immunogen	Affinity purified chicken Ig or isolated lymphocytes.
Conjugation	APC

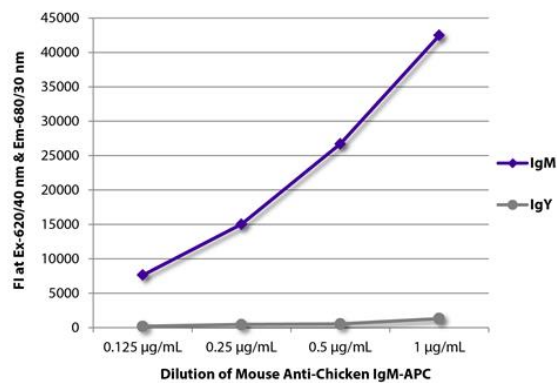
Application Instructions

Application table	Application	Dilution
	FACS	< 0.2 µg/10 ⁶ cells
	FLISA	< 1 µg/ml
	ICC/IF	Assay-dependent
	IHC-Fr	Assay-dependent
Application Note	* The dilutions indicate recommended starting dilutions and the optimal dilutions or concentrations should be determined by the scientist.	

Properties

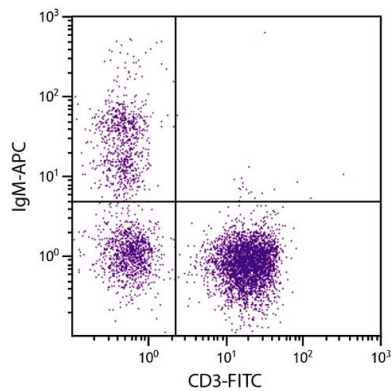
Form	Liquid
Buffer	PBS, 0.1% Sodium azide and Sucrose.
Preservative	0.1% Sodium azide
Stabilizer	Sucrose
Concentration	0.1 mg/ml
Storage instruction	Aliquot and store in the dark at 2-8°C. Keep protected from prolonged exposure to light. Avoid repeated freeze/thaw cycles. Suggest spin the vial prior to opening. The antibody solution should be gently mixed before use.

Images



ARG22351 Mouse anti-Chicken IgM antibody [M-1] (APC) FLISA image

FLISA: The plate was coated with purified chicken IgM and IgY. Immunoglobulins were detected with serially diluted ARG22351 Mouse anti-Chicken IgM antibody [M-1] (APC).



ARG22351 Mouse anti-Chicken IgM antibody [M-1] (APC) FACS image

Flow Cytometry: Chicken peripheral blood lymphocytes stained with ARG22351 Mouse anti-Chicken IgM antibody [M-1] (APC) and [ARG21151](#) anti-CD3 epsilon antibody [CT-3] (FITC).