

ARG22302 Mouse anti-Rabbit Light Chain antibody [SB62a] (HRP)

Package: 500 µl
Store at: 4°C

Summary

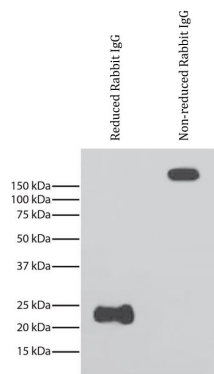
Product Description	HRP-conjugated Mouse Monoclonal antibody [SB62a] recognizes Rabbit Light Chain
Tested Reactivity	Rb
Tested Application	ELISA, WB
Host	Mouse
Clonality	Monoclonal
Clone	SB62a
Isotype	IgG2b
Target Name	Light Chain
Species	Rabbit
Immunogen	Rabbit Light Chain
Conjugation	HRP

Application Instructions

Application table	Application	Dilution
	ELISA	1:4000 - 1:8000
	WB	1:4000 - 1:8000
Application Note	* The dilutions indicate recommended starting dilutions and the optimal dilutions or concentrations should be determined by the scientist.	

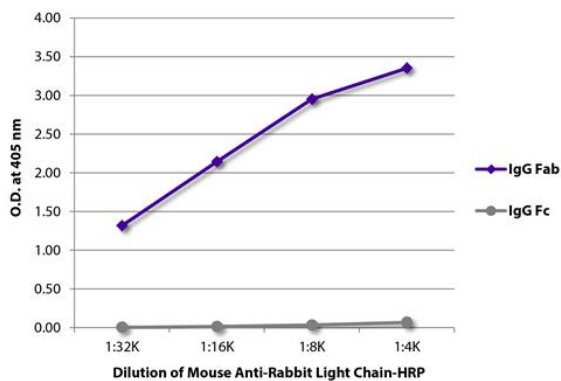
Properties

Form	Liquid
Buffer	50% PBS (pH 7.4) and 50% Glycerol
Stabilizer	50% Glycerol
Storage instruction	Aliquot and store in the dark at 2-8°C. Keep protected from prolonged exposure to light. Avoid repeated freeze/thaw cycles. Suggest spin the vial prior to opening. The antibody solution should be gently mixed before use.
Note	For laboratory research only, not for drug, diagnostic or other use.



ARG22302 Mouse anti-Rabbit Light Chain antibody [SB62a] (HRP)
WB image

Western blot: Reduced and non-reduced Rabbit IgG stained with ARG22302 Mouse anti-Rabbit Light Chain antibody [SB62a] (HRP). Light chains were visualized using chemiluminescent detection.



ARG22302 Mouse anti-Rabbit Light Chain antibody [SB62a] (HRP)
ELISA image

ELISA: The plate was coated with purified rabbit IgG Fab and IgG Fc. Immunoglobulins were detected with serially diluted ARG22302 Mouse anti-Rabbit Light Chain antibody [SB62a] (HRP).