

ARG22297 anti-AHA1 antibody

Package: 50 µl
Store at: -20°C

Summary

Product Description	Rabbit Polyclonal antibody recognizes AHA1
Tested Reactivity	Hu, Ms, Rat
Tested Application	ELISA, ICC/IF, IHC-P, IP, WB
Specificity	Detects ~38kDa.
Host	Rabbit
Clonality	Polyclonal
Target Name	AHA1
Species	Mouse
Immunogen	Mouse Aha1
Conjugation	Un-conjugated
Alternate Names	C14orf3; p38; AHA1; Activator of 90 kDa heat shock protein ATPase homolog 1

Application Instructions

Application table	Application	Dilution
	ELISA	Assay-dependent
	ICC/IF	1:60
	IHC-P	Assay-dependent
	IP	Assay-dependent
	WB	1:1000
	Application Note	* The dilutions indicate recommended starting dilutions and the optimal dilutions or concentrations should be determined by the scientist.

Properties

Form	Liquid
Purification	Purification with Protein A.
Buffer	PBS (pH 7.4), 0.09% Sodium azide and 50% Glycerol
Preservative	0.09% Sodium azide
Stabilizer	50% Glycerol
Concentration	1 mg/ml
Storage instruction	For continuous use, store undiluted antibody at 2-8°C for up to a week. For long-term storage, aliquot and store at -20°C. Storage in frost free freezers is not recommended. Avoid repeated freeze/thaw cycles. Suggest spin the vial prior to opening. The antibody solution should be gently mixed before use.

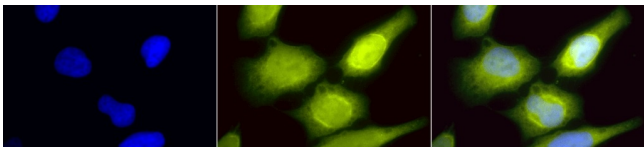
Note

For laboratory research only, not for drug, diagnostic or other use.

Bioinformation

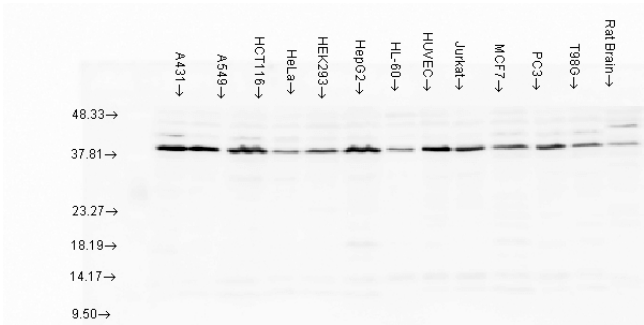
Database links	GeneID: 10598 Human GeneID: 217737 Mouse Swiss-port # O95433 Human Swiss-port # Q8BK64 Mouse
Gene Symbol	Ahsa1
Gene Full Name	AHA1, activator of heat shock protein ATPase 1
Function	Cochaperone that stimulates HSP90 ATPase activity (By similarity). May affect a step in the endoplasmic reticulum to Golgi trafficking. [UniProt]
Calculated Mw	38 kDa
Cellular Localization	Cytoplasm, Endoplasmic Reticulum

Images



ARG22297 anti-AHA1 antibody ICC/IF image

Immunocytochemistry: 2% Formaldehyde (20 min at RT) fixed Heat Shocked HeLa cells stained with ARG22297 anti-AHA1 antibody (yellow) at 1:60 for 12 hours at 4°C. Counterstain: DAPI (blue) nuclear stain at 1:40000 for 120 min at RT. Magnification: 100x. Left: DAPI (blue) nuclear stain, Middle: Primary antibody, Right: Composite.



ARG22297 anti-AHA1 antibody WB image

Western blot: A431, A549, HCT116, HeLa, HEK293, HepG2, HL-60, HUVEC, Jurkat, MCF7, PC3, T98G, and Rat brain lysates stained with ARG22297 anti-AHA1 antibody at 1:1000 dilution.