

ARG22292 anti-PDI antibody

Package: 50 µl
Store at: -20°C

Summary

Product Description	Rabbit Polyclonal antibody recognizes PDI
Tested Reactivity	Hu, Ms, Rat, Bov, Dog, Gpig, Hm, Mk, Pig, Sheep, Xenopus laevis
Tested Application	ICC/IF, IHC-P, IP, WB
Specificity	Detects ~58kDa.
Host	Rabbit
Clonality	Polyclonal
Target Name	PDI
Species	Rat
Immunogen	KLH-conjugated synthetic peptide from Rat PDI
Conjugation	Un-conjugated
Alternate Names	PDA2; Pancreas-specific protein disulfide isomerase; PDIR; PDIP; PDI; Protein disulfide-isomerase A2; PDip; EC 5.3.4.1

Application Instructions

Application table	Application	Dilution
	ICC/IF	1:100
	IHC-P	1:100
	IP	Assay-dependent
	WB	1:1000
Application Note	* The dilutions indicate recommended starting dilutions and the optimal dilutions or concentrations should be determined by the scientist.	

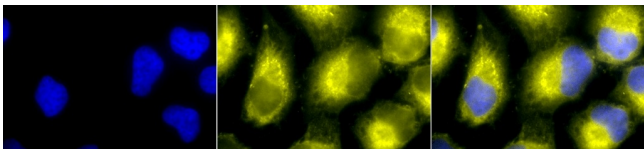
Properties

Form	Liquid
Purification	Affinity purification with immunogen.
Buffer	PBS (pH 7.4), 0.09% Sodium azide and 50% Glycerol
Preservative	0.09% Sodium azide
Stabilizer	50% Glycerol
Concentration	1 mg/ml
Storage instruction	For continuous use, store undiluted antibody at 2-8°C for up to a week. For long-term storage, aliquot and store at -20°C. Storage in frost free freezers is not recommended. Avoid repeated freeze/thaw cycles. Suggest spin the vial prior to opening. The antibody solution should be gently mixed before use.

Bioinformation

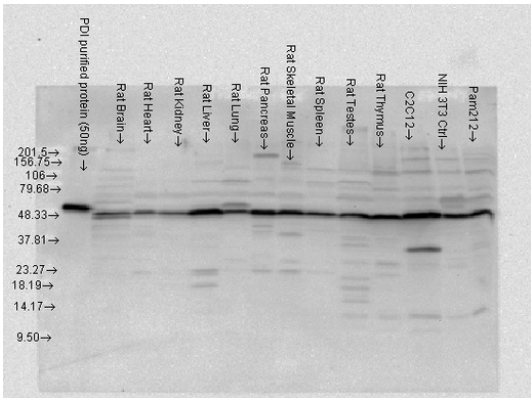
Database links	GeneID: 64714 Human GeneID: 69191 Mouse Swiss-port # D3Z6P0 Mouse Swiss-port # Q13087 Human
Gene Symbol	Pdia2
Gene Full Name	protein disulfide isomerase family A, member 2
Background	Protein disulfide isomerases (EC 5.3.4.1), such as PDIP, are endoplasmic reticulum (ER) resident proteins that catalyze protein folding and thiol-disulfide interchange reactions (Desilva et al., 1996 [PubMed 8561901]).[supplied by OMIM, Mar 2008]
Function	Acts as an intracellular estrogen-binding protein. May be involved in modulating cellular levels and biological functions of estrogens in the pancreas. May act as a chaperone that inhibits aggregation of misfolded proteins. [UniProt]
Calculated Mw	58 kDa
PTM	The disulfide-linked homodimer exhibits an enhanced chaperone activity. Glycosylated.
Cellular Localization	Endoplasmic Reticulum, Endoplasmic reticulum lumen

Images



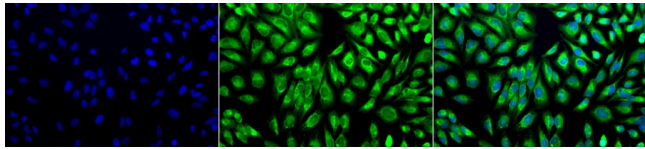
ARG22292 anti-PDI antibody ICC/IF image

Immunocytochemistry: 2% Formaldehyde (20 min at RT) fixed HeLa cells stained with ARG22292 anti-PDI antibody (yellow) at 1:100 dilution (12 hours at 4°C). Counterstain: DAPI (blue) nuclear stain at 1:40000 for 120 min at RT. Magnification: 100x. Left: DAPI (blue) nuclear stain, Middle: Primary antibody, Right: Composite.



ARG22292 anti-PDI antibody WB image

Western blot: 50 ng of PDI purified protein and 15 µg of Rat tissue/cell lysates stained with ARG22292 anti-PDI antibody at 1:4000 dilution.



ARG22292 anti-PDI antibody ICC/IF image

Immunocytochemistry: 2% Formaldehyde (20 min at RT) fixed HeLa cells stained with ARG22292 anti-PDI antibody (green) at 1:100 dilution (12 hours at 4°C). Counterstain: DAPI (blue) nuclear stain at 1:40000 for 120 min at RT. Magnification: 20x. Left: DAPI (blue) nuclear stain, Middle: Primary antibody, Right: Composite.