

ARG22265 anti-CD107b / LAMP2 antibody [GL2A7]

Package: 50 µg
Store at: -20°C

Summary

Product Description	Rat Monoclonal antibody [GL2A7] recognizes CD107b / LAMP2
Tested Reactivity	Hu, Ms, Rb
Tested Application	FACS, ICC/IF, IHC-FoFr, IHC-Fr, IHC-P, IP, WB
Specificity	Detects ~100-110kDa.
Host	Rat
Clonality	Monoclonal
Clone	GL2A7
Isotype	IgG1
Target Name	CD107b / LAMP2
Species	Mouse
Immunogen	Purified preparation of Mouse liver lysosomal membranes
Conjugation	Un-conjugated
Alternate Names	CD antigen CD107b; LAMPB; CD107b; LGP110; Lysosome-associated membrane glycoprotein 2; LAMP-2; CD107 antigen-like family member B; Lysosome-associated membrane protein 2

Application Instructions

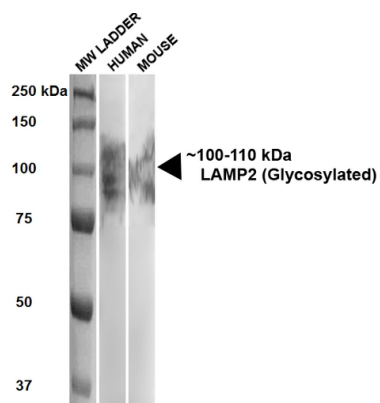
Application table	Application	Dilution
	FACS	1µg for 10 ⁶ cells
	ICC/IF	1:500
	IHC-FoFr	Assay-dependent
	IHC-Fr	Assay-dependent
	IHC-P	1:100 - 1:500
	IP	Assay-dependent
	WB	1:1000
	Application Note	For best ICC/IF results, fix cells with methanol or with (para)formaldehyde-lysine-periodate formulation; for the latter, permeabilize with saponin, not with Triton X-100 or NP-40. Unfixed cells that have been permeabilized with saponin can also be stained. For immunoprecipitation, the antigen solubilized with Triton X-100 will bind to GL2A7 coupled to a matrix. * The dilutions indicate recommended starting dilutions and the optimal dilutions or concentrations should be determined by the scientist.
Observed Size	~ 100-110 kDa	

Properties

Form	Liquid
Purification	Purification with Protein G.
Buffer	PBS (pH 7.4), 0.09% Sodium azide and 50% Glycerol
Preservative	0.09% Sodium azide
Stabilizer	50% Glycerol
Concentration	1 mg/ml
Storage instruction	For continuous use, store undiluted antibody at 2-8°C for up to a week. For long-term storage, aliquot and store at -20°C. Storage in frost free freezers is not recommended. Avoid repeated freeze/thaw cycles. Suggest spin the vial prior to opening. The antibody solution should be gently mixed before use.
Note	For laboratory research only, not for drug, diagnostic or other use.

Bioinformation

Database links	GeneID: 16784 Mouse GeneID: 3920 Human Swiss-port # P13473 Human Swiss-port # P17047 Mouse
Gene Symbol	Lamp2
Gene Full Name	lysosomal-associated membrane protein 2
Background	The protein encoded by this gene is a member of a family of membrane glycoproteins. This glycoprotein provides selectins with carbohydrate ligands. It may play a role in tumor cell metastasis. It may also function in the protection, maintenance, and adhesion of the lysosome. Alternative splicing of this gene results in multiple transcript variants encoding distinct proteins. [provided by RefSeq, Jul 2008]
Function	Implicated in tumor cell metastasis. May function in protection of the lysosomal membrane from autodigestion, maintenance of the acidic environment of the lysosome, adhesion when expressed on the cell surface (plasma membrane), and inter- and intracellular signal transduction. Protects cells from the toxic effects of methylating mutagens. [UniProt]
Calculated Mw	45 kDa
PTM	O- and N-glycosylated; some of the 16 N-linked glycans are polylactosaminoglycans.
Cellular Localization	Cell membrane, Endosome, Endosome membrane, Lysosome, Lysosome membrane



ARG22265 anti-CD107b / LAMP2 antibody [GL2A7] WB image

Western blot: 1) MW ladder, 2) 20 µg of HEK293, and 3) 10 µg of NIH3T3 lysates stained with ARG22265 anti-CD107b / LAMP2 antibody [GL2A7] at 1:500 dilution (60 min at RT). Block: 5% milk + TBST 1hr at RT.