

## ARG22247 anti-GluR1 antibody [S355-1]

Package: 50 µg  
Store at: -20°C

### Summary

Product Description	Mouse Monoclonal antibody [S355-1] recognizes GluR1
Tested Reactivity	Hu, Ms, Rat
Tested Application	ICC/IF, IHC-P, WB
Specificity	Detects ~100kDa. Does not cross-react with GluR2.
Host	Mouse
Clonality	Monoclonal
Clone	S355-1
Isotype	IgG1
Target Name	GluR1
Species	Rat
Immunogen	Fusion protein around aa. 1-389 (extracellular N-terminus) of Rat GluR1
Conjugation	Un-conjugated
Alternate Names	GLUH1; GluA1; GluR-1; Glutamate receptor ionotropic, AMPA 1; GluR-K1; GLUR1; HBGR1; AMPA-selective glutamate receptor 1; GluR-A; GLURA; Glutamate receptor 1

### Application Instructions

Application table	Application	Dilution
	ICC/IF	1:100
	IHC-P	1:100
	WB	1:1000
Application Note	* The dilutions indicate recommended starting dilutions and the optimal dilutions or concentrations should be determined by the scientist.	

### Properties

Form	Liquid
Purification	Purification with Protein G.
Buffer	PBS (pH 7.4), 0.1% Sodium azide and 50% Glycerol
Preservative	0.1% Sodium azide
Stabilizer	50% Glycerol
Concentration	1 mg/ml
Storage instruction	For continuous use, store undiluted antibody at 2-8°C for up to a week. For long-term storage, aliquot and store at -20°C. Storage in frost free freezers is not recommended. Avoid repeated freeze/thaw

cycles. Suggest spin the vial prior to opening. The antibody solution should be gently mixed before use.

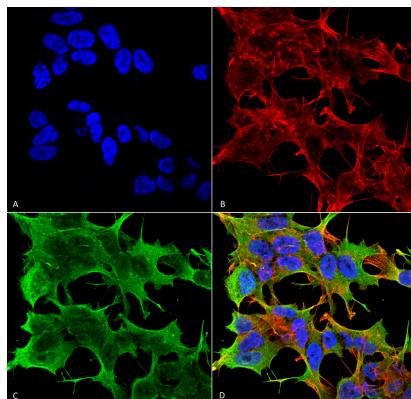
#### Note

For laboratory research only, not for drug, diagnostic or other use.

## Bioinformation

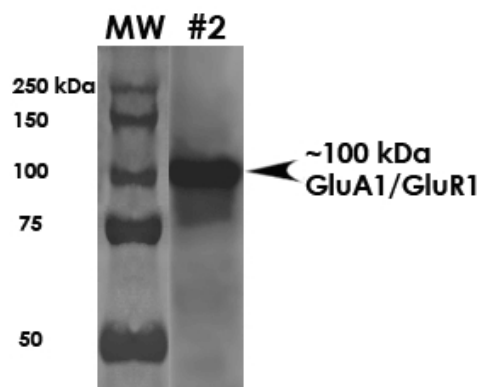
Gene Symbol	Gria1
Gene Full Name	glutamate receptor, ionotropic, AMPA 1
Background	Glutamate receptors are the predominant excitatory neurotransmitter receptors in the mammalian brain and are activated in a variety of normal neurophysiologic processes. These receptors are heteromeric protein complexes with multiple subunits, each possessing transmembrane regions, and all arranged to form a ligand-gated ion channel. The classification of glutamate receptors is based on their activation by different pharmacologic agonists. This gene belongs to a family of alpha-amino-3-hydroxy-5-methyl-4-isoxazole propionate (AMPA) receptors. Alternatively spliced transcript variants encoding different isoforms have been found for this gene. [provided by RefSeq, Jul 2008]
Function	Ionotropic glutamate receptor. L-glutamate acts as an excitatory neurotransmitter at many synapses in the central nervous system. Binding of the excitatory neurotransmitter L-glutamate induces a conformation change, leading to the opening of the cation channel, and thereby converts the chemical signal to an electrical impulse. The receptor then desensitizes rapidly and enters a transient inactive state, characterized by the presence of bound agonist. In the presence of CACNG4 or CACNG7 or CACNG8, shows resensitization which is characterized by a delayed accumulation of current flux upon continued application of glutamate. [UniProt]
Highlight	Related products: <a href="#">GluR1 antibodies</a> ; <a href="#">GluR1 Duos / Panels</a> ; <a href="#">Anti-Mouse IgG secondary antibodies</a> ; Related news: <a href="#">Viral-like capsids, new trans-synaptic mRNA transport mechanism</a>
Research Area	Neuroscience antibody; Postsynaptic Receptor antibody
Calculated Mw	102 kDa
PTM	Palmitoylated. Depalmitoylated upon glutamate stimulation. Cys-603 palmitoylation leads to Golgi retention and decreased cell surface expression. In contrast, Cys-829 palmitoylation does not affect cell surface expression but regulates stimulation-dependent endocytosis (By similarity). Phosphorylated at Ser-645. Phosphorylated at Ser-710 by PKC. Phosphorylated at Ser-849 by PKC, PKA and CAMK2. Phosphorylated at Ser-863 by PKC, PKA and PRKG2.
Cellular Localization	Cell Junction, Cell membrane, Endoplasmic Reticulum

## Images



ARG22247 anti-GluR1 antibody [S355-1] ICC/IF image

Immunofluorescence: Human Neuroblastoma cell line SK-N-BE. Fixation: 4% Formaldehyde for 15 min at RT. Primary Antibody: ARG22247 anti-GluR1 antibody [S355-1] at 1:100 for 60 min at RT. Secondary Antibody: Goat anti-Mouse ATTO 488 at 1:100 for 60 min at RT. Counterstain: Phalloidin Texas Red F-Actin stain; DAPI (blue) nuclear stain. Magnification: 60X. (A) DAPI (blue) nuclear stain (B) Phalloidin Texas Red F-Actin stain (C) ARG22247 anti-GluR1 antibody [S355-1] (D) Composite.



ARG22247 anti-GluR1 antibody [S355-1] WB image

Western blot: 1) MW ladder, 2) 10 µg of Rat brain membrane lysates stained with ARG22247 anti-GluR1 antibody [S355-1] at 1:2000 dilution (60 min at RT). Block: 5% milk + TBST O/N at 4°C.