

ARG22186 anti-Bcl 2 antibody [10C4]

Package: 50 µg
Store at: -20°C

Summary

Product Description	Mouse Monoclonal antibody [10C4] recognizes Bcl 2
Tested Reactivity	Ms, Rat
Tested Application	FACS, ICC/IF, IHC-Fr, IHC-P, IP, WB
Specificity	Mouse/Rat Bcl-2
Host	Mouse
Clonality	Monoclonal
Clone	10C4
Isotype	IgG1, kappa
Target Name	Bcl 2
Species	Mouse
Immunogen	Synthetic peptide around aa. 61-76 of Murine Bcl-2 protein.
Conjugation	Un-conjugated
Alternate Names	BCL2; BCL2 Apoptosis Regulator; PPP1R50; Bcl-2; Protein Phosphatase 1, Regulatory Subunit 50; Apoptosis Regulator Bcl-2; B-Cell CLL/Lymphoma 2; BCL2, Apoptosis Regulator

Application Instructions

Application table	Application	Dilution
	FACS	Assay-dependent
	ICC/IF	Assay-dependent
	IHC-Fr	Assay-dependent
	IHC-P	Assay-dependent
	IP	Assay-dependent
	WB	< 2 µg/ml
	Application Note	* The dilutions indicate recommended starting dilutions and the optimal dilutions or concentrations should be determined by the scientist.

Properties

Form	Liquid
Buffer	BBS (pH 8.2)
Concentration	0.1 mg/ml
Storage instruction	For continuous use, store undiluted antibody at 2-8°C for up to a week. For long-term storage, aliquot and store at -20°C. Storage in frost free freezers is not recommended. Avoid repeated freeze/thaw

cycles. Suggest spin the vial prior to opening. The antibody solution should be gently mixed before use.

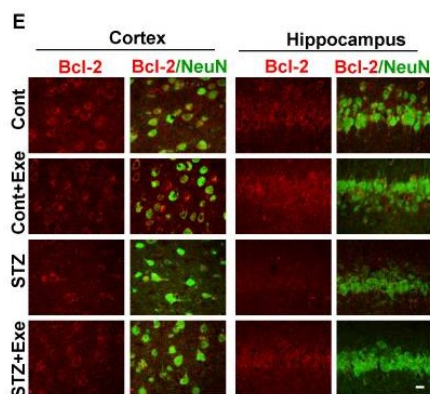
Note

For laboratory research only, not for drug, diagnostic or other use.

Bioinformation

Database links	GeneID: 12043 Mouse GeneID: 24224 Rat Swiss-port # P10417 Mouse Swiss-port # P49950 Rat
Gene Symbol	BCL2
Gene Full Name	B cell leukemia/lymphoma 2
Background	This gene encodes an integral outer mitochondrial membrane protein that blocks the apoptotic death of some cells such as lymphocytes. Constitutive expression of BCL2, such as in the case of translocation of BCL2 to Ig heavy chain locus, is thought to be the cause of follicular lymphoma. Alternative splicing results in multiple transcript variants. [provided by RefSeq, Feb 2016]
Function	Suppresses apoptosis in a variety of cell systems including factor-dependent lymphohematopoietic and neural cells. [UniProt]
Highlight	Related Antibody Duos and Panels: ARG30268 Apoptosis Marker Antibody Duo (Bcl2, Bax) ARG30269 Apoptosis Marker Antibody Duo (Bcl2, Bid) Related products: Bcl-2 antibodies: Bcl-2 Duos / Panels: Anti-Rabbit IgG secondary antibodies: Related news: Lymphoma
Research Area	Cancer antibody; Cell Biology and Cellular Response antibody; Cell Death antibody; Metabolism antibody; Signaling Transduction antibody; Apoptosis Marker antibody
Calculated Mw	26 kDa
PTM	Phosphoprotein, Ubl conjugation. [UniProt]
Cellular Localization	Cytoplasm, Endoplasmic reticulum, Membrane, Mitochondrion, Mitochondrion outer membrane, Nucleus. [UniProt]

Images



ARG22186 anti-Bcl 2 antibody [10C4] IHC-Fr image

Immunohistochemistry: Rat Brain stained with ARG22186 anti-Bcl 2 antibody [10C4].

Shu Feng et al. Theranostics ., (2023) [doi: 10.7150/thno.81951](#), Fig. 3E.