

ARG22185 anti-CD107b / LAMP2 antibody [H4B4] (PE-Cyanine 5)

Package: 50 tests
Store at: 4°C

Summary

Product Description	PE-Cyanine 5-conjugated Mouse Monoclonal antibody [H4B4] recognizes CD107b / LAMP2
Tested Reactivity	Hu, AGMK, R. Mk
Tested Application	EM, FACS, ICC/IF, IHC-Fr, IHC-P, WB
Specificity	Human/Rhesus/African Green Monkey CD107b
Host	Mouse
Clonality	Monoclonal
Clone	H4B4
Isotype	IgG1, kappa
Target Name	CD107b / LAMP2
Species	Human
Immunogen	Human adherent peripheral blood cells
Conjugation	PE-Cyanine 5
Alternate Names	CD antigen CD107b; LAMPB; CD107b; LGP110; Lysosome-associated membrane glycoprotein 2; LAMP-2; CD107 antigen-like family member B; Lysosome-associated membrane protein 2

Application Instructions

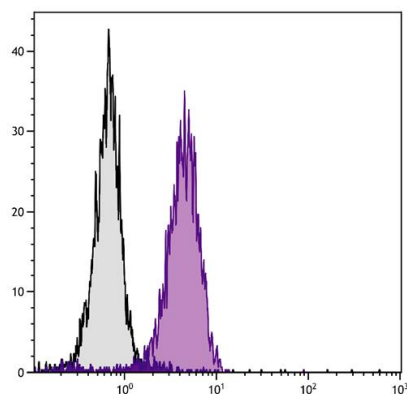
Application table	Application	Dilution
	EM	Assay-dependent
	FACS	10 µl/10 ⁶ cells
	ICC/IF	Assay-dependent
	IHC-Fr	Assay-dependent
	IHC-P	Assay-dependent
	WB	Assay-dependent
	Application Note	* The dilutions indicate recommended starting dilutions and the optimal dilutions or concentrations should be determined by the scientist.

Properties

Form	Liquid
Buffer	PBS, 0.1% Sodium azide and Sucrose.
Preservative	0.1% Sodium azide
Stabilizer	Sucrose

Storage instruction	Aliquot and store in the dark at 2-8°C. Keep protected from prolonged exposure to light. Avoid repeated freeze/thaw cycles. Suggest spin the vial prior to opening. The antibody solution should be gently mixed before use.
Note	For laboratory research only, not for drug, diagnostic or other use.
Bioinformation	
Database links	GeneID: 3920 Human Swiss-port # P13473 Human
Gene Symbol	LAMP2
Gene Full Name	lysosomal-associated membrane protein 2
Background	The protein encoded by this gene is a member of a family of membrane glycoproteins. This glycoprotein provides selectins with carbohydrate ligands. It may play a role in tumor cell metastasis. It may also function in the protection, maintenance, and adhesion of the lysosome. Alternative splicing of this gene results in multiple transcript variants encoding distinct proteins. [provided by RefSeq, Jul 2008]
Function	Implicated in tumor cell metastasis. May function in protection of the lysosomal membrane from autodigestion, maintenance of the acidic environment of the lysosome, adhesion when expressed on the cell surface (plasma membrane), and inter- and intracellular signal transduction. Protects cells from the toxic effects of methylating mutagens. [UniProt]
Calculated Mw	45 kDa
PTM	O- and N-glycosylated; some of the 16 N-linked glycans are polylactosaminoglycans.

Images



ARG22185 anti-CD107b / LAMP2 antibody [H4B4] (PE-Cyanine 5)
FACS image

Flow Cytometry: Human T cell leukemia cell line Jurkat was intracellularly stained with ARG22185 anti-CD107b / LAMP2 antibody [H4B4] (PE-Cyanine 5).