

ARG22104 anti-Ly6G + Ly6C antibody [RB6-8C5]

Package: 100 µg
Store at: -20°C

Summary

Product Description	Rat Monoclonal antibody [RB6-8C5] recognizes Ly6G + Ly6C
Tested Reactivity	Ms
Tested Application	Depletion, FACS, IHC-Fr, IHC-P, IP
Specificity	This antibody recognizes the mouse Gr-1 antigen, a ~21 - 25 kDa GPI anchored cell surface protein bearing a single uPAR/Ly6 domain that belongs to the Ly-6 family of proteins (Lee et al. 2013). Clone RB6-8C5 reacts predominantly with the Ly-6G protein but weaker reactivity with the Ly-6C protein has been reported (Fleming et al. 1993). However, other observations dispute the cross-reactivity of clone RB6-8C5 with the Ly-6C protein with the alternative explanation that certain sub-populations of bone marrow cells simultaneously express both Ly-6C and Ly-6G (Nagendra et al. 2007).
Host	Rat
Clonality	Monoclonal
Clone	RB6-8C5
Isotype	IgG2b, kappa
Target Name	Ly6G + Ly6C
Species	Mouse
Conjugation	Un-conjugated
Alternate Names	Gr1; Gr-1; Ly-6G

Application Instructions

Application table	Application	Dilution
	Depletion	Assay-dependent
	FACS	1:50 - 1:100 (Use 10 µl to label 10 ⁶ cells in 100 µl)
	IHC-Fr	Assay-dependent
	IHC-P	Assay-dependent
	IP	Assay-dependent

Application Note * The dilutions indicate recommended starting dilutions and the optimal dilutions or concentrations should be determined by the scientist.

Properties

Form	Liquid
Buffer	BBS (pH 8.2)
Concentration	0.5 mg/ml
Storage instruction	For continuous use, store undiluted antibody at 2-8°C for up to a week. For long-term storage, aliquot

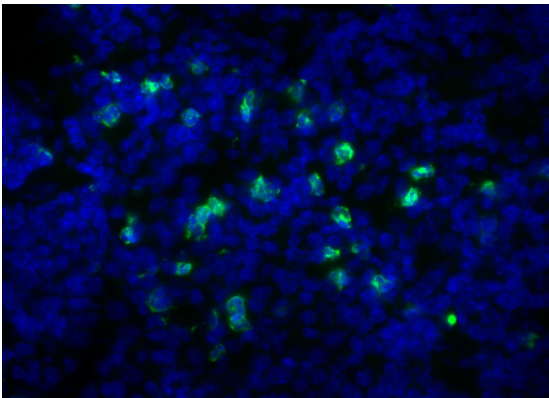
and store at -20°C. Storage in frost free freezers is not recommended. Avoid repeated freeze/thaw cycles. Suggest spin the vial prior to opening. The antibody solution should be gently mixed before use.

Note For laboratory research only, not for drug, diagnostic or other use.

Bioinformation

Database links	GeneID: 546644 Mouse
Gene Symbol	Ly6g
Gene Full Name	lymphocyte antigen 6 complex, locus G
Background	Ly6G is a component of the myeloid differentiation antigen Gr-1, together with Ly6C. Ly6G is a good marker for detection of peripheral neutrophils. Expression of Gr-1 in bone marrow correlates with granulocyte differentiation and maturation. Physiological role of Ly6G remains still unclear. Its treatment with antibodies in vivo leads to neutropenia and has inhibitory effect on local immune responses. _x000D_
Highlight	Related Antibody Duos and Panels: ARG30326 Inflammatory Cell Antibody Panel (for mouse) ARG30335 Mouse MDSC Marker Antibody Duo Related products: Ly6 antibodies; Ly6 ELISA Kits; Ly6 Duos / Panels; Anti-Rat IgG secondary antibodies; Related news: New antibody panels and duos for Tumor immune microenvironment Exploring Antiviral Immune Response Anti-SerpinB9 therapy, a new strategy for cancer therapy
Research Area	Mouse Inflammatory Cell Marker antibody; Neutrophil Marker antibody; Mouse MDSC Marker antibody; Myeloid-derived suppressor cell antibody
Calculated Mw	12 kDa

Images



ARG22104 anti-Ly6G + Ly6C antibody [RB6-8C5] IHC-Fr image

Immunohistochemistry: Mouse spleen section stained with [ARG22104](#) anti-Ly6G + Ly6C antibody [RB6-8C5] followed by [ARG21706](#) Mouse anti-Rat IgG2b antibody [2B10A8] (FITC).