

ARG21963 anti-VGluT1 antibody [S28-9]

Package: 50 µg
Store at: -20°C

Summary

Product Description	Mouse Monoclonal antibody [S28-9] recognizes VGluT1
Tested Reactivity	Hu, Ms, Rat
Tested Application	IHC-P, WB
Host	Mouse
Clonality	Monoclonal
Clone	S28-9
Target Name	VGluT1
Species	Rat
Immunogen	Fusion protein around aa. 493-560 (cytoplasmic C-terminus) of Rat VGluT1.
Conjugation	Un-conjugated
Alternate Names	Brain-specific Na ⁺ ; Vesicular glutamate transporter 1; Solute carrier family 17 member 7; VGLUT1; BNPI; VGluT1

Application Instructions

Application table	Application	Dilution
	IHC-P	Assay-dependent
	WB	1:1000
Application Note	* The dilutions indicate recommended starting dilutions and the optimal dilutions or concentrations should be determined by the scientist.	

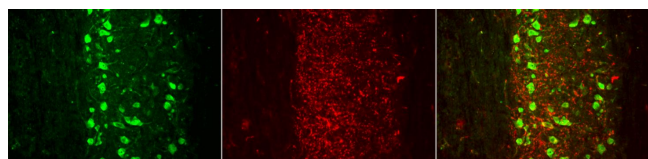
Properties

Form	Liquid
Purification	Purification with Protein G.
Buffer	PBS (pH 7.4), 0.09% Sodium azide and 50% Glycerol.
Preservative	0.09% Sodium azide
Stabilizer	50% Glycerol
Concentration	1 mg/ml
Storage instruction	For continuous use, store undiluted antibody at 2-8°C for up to a week. For long-term storage, aliquot and store at -20°C. Storage in frost free freezers is not recommended. Avoid repeated freeze/thaw cycles. Suggest spin the vial prior to opening. The antibody solution should be gently mixed before use.
Note	For laboratory research only, not for drug, diagnostic or other use.

Bioinformation

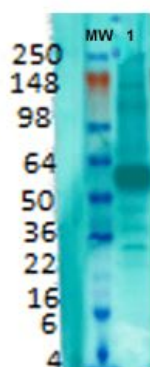
Gene Symbol	SLC17A7
Gene Full Name	solute carrier family 17 (vesicular glutamate transporter), member 7
Background	The protein encoded by this gene is a vesicle-bound, sodium-dependent phosphate transporter that is specifically expressed in the neuron-rich regions of the brain. It is preferentially associated with the membranes of synaptic vesicles and functions in glutamate transport. The protein shares 82% identity with the differentiation-associated Na-dependent inorganic phosphate cotransporter and they appear to form a distinct class within the Na ⁺ /Pi cotransporter family. [provided by RefSeq, Jul 2008]
Function	Mediates the uptake of glutamate into synaptic vesicles at presynaptic nerve terminals of excitatory neural cells. May also mediate the transport of inorganic phosphate. [UniProt]
Highlight	Related news: Neuronal Development Marker
Calculated Mw	62 kDa

Images



ARG21963 anti-VGLUT1 antibody [S28-9] IHC image

Immunohistochemistry: 4% PFA fixed Mouse spinal cord tissue stained with ARG21963 anti-VGLUT1 antibody [S28-9] (red) at 1:500 dilution, overnight at RT. Counterstain: NeuN neuronal stain (green).



ARG21963 anti-VGLUT1 antibody [S28-9] WB image

Western blot: Rat brain membrane lysate stained with ARG21963 anti-VGLUT1 antibody [S28-9] at 1:1000 dilution.