

ARG21918 Goat anti-Rabbit IgG antibody (Biotin), pre-adsorbed

Package: 500 µg
Store at: 4°C

Summary

Product Description	Biotin-conjugated Goat Polyclonal antibody recognizes Rabbit IgG
Tested Reactivity	Rb
Tested Application	ELISA, FACS, FLISA, ICC/IF, IHC-Fr, IHC-P, WB
Specificity	The antibody reacts with the heavy chain of Rabbit IgG. The antibody is pre-adsorbed with Rabbit IgM, so the antibody may not react with Rabbit IgM, but may react with immunoglobulins from other species.
Host	Goat
Clonality	Polyclonal
Isotype	IgG
Target Name	IgG
Species	Rabbit
Conjugation	Biotin

Application Instructions

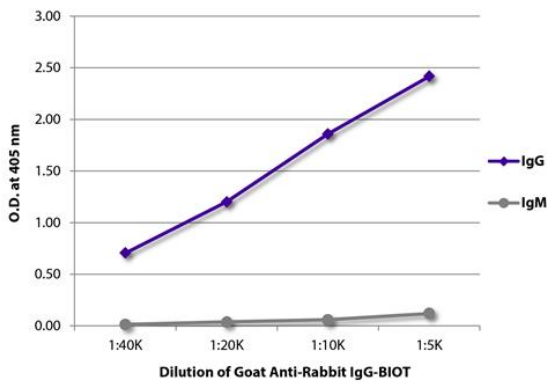
Pre Adsorbed	Rabbit IgM.	
Application table	Application	Dilution
	ELISA	1:5000 - 1:20000
	FACS	Assay-dependent
	FLISA	Assay-dependent
	ICC/IF	Assay-dependent
	IHC-Fr	Assay-dependent
	IHC-P	Assay-dependent
	WB	Assay-dependent
Application Note	* The dilutions indicate recommended starting dilutions and the optimal dilutions or concentrations should be determined by the scientist.	

Properties

Form	Liquid
Purification	Affinity purification with immunogen.
Buffer	PBS and 0.1% Sodium azide.
Preservative	0.1% Sodium azide

Concentration	0.5 mg/ml
Storage instruction	Aliquot and store in the dark at 2-8°C. Keep protected from prolonged exposure to light. Avoid repeated freeze/thaw cycles. Suggest spin the vial prior to opening. The antibody solution should be gently mixed before use.
Note	For laboratory research only, not for drug, diagnostic or other use.

Images



ARG21918 Goat anti-Rabbit IgG antibody (Biotin) (pre-adsorbed)
ELISA image

ELISA: The plate was coated with purified rabbit IgG and IgM. Immunoglobulins were detected with serially diluted ARG21918 Goat anti-Rabbit IgG antibody (Biotin) (pre-adsorbed) followed by [ARG23912](#) Streptavidin (HRP).