

ARG21898

Goat anti-Mouse IgG2b antibody, F(ab')₂ fragment (Biotin), pre-adsorbed

Package: 250 µg

Store at: 4°C

Summary

| | |
|---------------------|---|
| Product Description | Biotin-conjugated F(ab') ₂ fragment of Goat Polyclonal antibody recognizes Mouse IgG2b |
| Tested Reactivity | Ms |
| Tested Application | ELISA, FACS, FLISA, ICC/IF |
| Specificity | Reacts with the heavy chain of mouse IgG2b |
| Host | Goat |
| Clonality | Polyclonal |
| Isotype | F(ab') ₂ IgG |
| Target Name | IgG2b |
| Species | Mouse |
| Conjugation | Biotin |

Application Instructions

Pre Adsorbed Mouse IgG1, IgG2a, IgG3, IgM, and IgA; Human immunoglobulins and pooled sera.

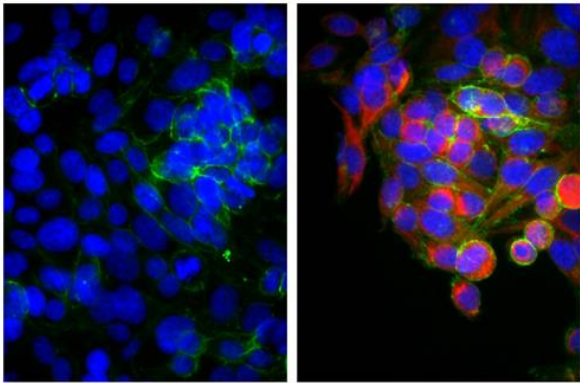
Application table

| Application | Dilution |
|-------------|------------------------------|
| ELISA | 1:5000 - 1:10000 |
| FACS | < 1 µg/10 ⁶ cells |
| FLISA | Assay-dependent |
| ICC/IF | Assay-dependent |

Application Note * The dilutions indicate recommended starting dilutions and the optimal dilutions or concentrations should be determined by the scientist.

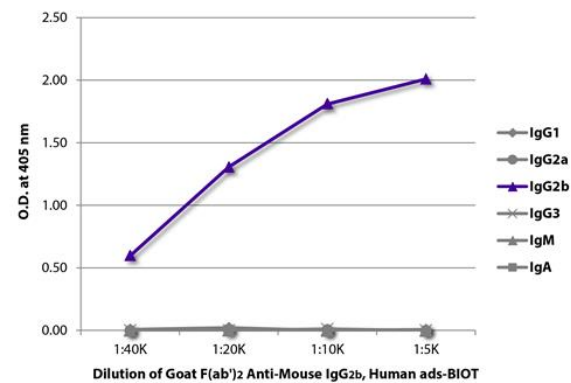
Properties

| | |
|---------------------|--|
| Form | Liquid |
| Buffer | PBS and 0.1% Sodium azide. |
| Preservative | 0.1% Sodium azide |
| Concentration | 0.5 mg/ml |
| Storage instruction | Aliquot and store in the dark at 2-8°C. Keep protected from prolonged exposure to light. Avoid repeated freeze/thaw cycles. Suggest spin the vial prior to opening. The antibody solution should be gently mixed before use. |
| Note | For laboratory research only, not for drug, diagnostic or other use. |



ARG21898 Goat anti-Mouse IgG2b antibody, F(ab')₂ fragment (Biotin) (pre-adsorbed) ICC/IF image

Immunofluorescence: Human epithelial carcinoma cell line HEp-2 stained with anti-Cytokeratin 18 antibody (right) and [ARG22146](#) anti-CD44 antibody [F10-44-2] (FITC) followed by ARG21898 Goat anti-Mouse IgG2b antibody, F(ab')₂ fragment (Biotin) (pre-adsorbed), Streptavidin (Cy3) and DAPI.



ARG21898 Goat anti-Mouse IgG2b antibody, F(ab')₂ fragment (Biotin) (pre-adsorbed) ELISA image

ELISA: The plate was coated with purified Mouse IgG1, IgG2a, IgG2b, IgG3, IgM, and IgA. Immunoglobulins were detected with serially diluted ARG21898 Goat anti-Mouse IgG2b antibody, F(ab')₂ fragment (Biotin) (pre-adsorbed) followed by [ARG23912](#) Streptavidin (HRP).