

ARG21811 Mouse anti-Human IgD antibody [IADB6] (Biotin)

Package: 250 µg
Store at: 4°C

Summary

Product Description	Biotin-conjugated Mouse Monoclonal antibody [IADB6] recognizes Human IgD
Tested Reactivity	Hu
Tested Application	ELISA, FACS, FLISA, IHC-Fr, IHC-P, IP
Host	Mouse
Clonality	Monoclonal
Clone	IADB6
Isotype	IgG2a, kappa
Target Name	IgD
Species	Human
Immunogen	Human IgD myeloma protein
Conjugation	Biotin

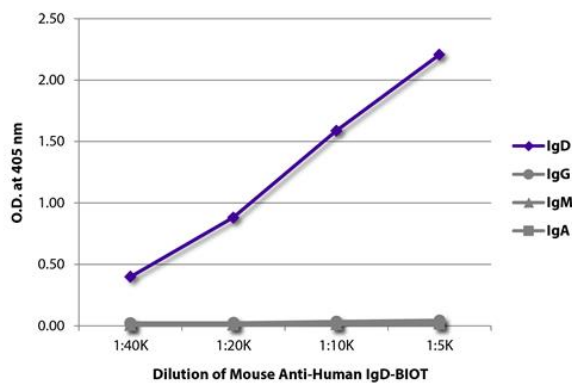
Application Instructions

Application table	Application	Dilution
	ELISA	1:5000 - 1:20000
	FACS	< 1 µg/10 ⁶ cells
	FLISA	Assay-dependent
	IHC-Fr	Assay-dependent
	IHC-P	Assay-dependent
	IP	Assay-dependent
	Application Note <p>* The dilutions indicate recommended starting dilutions and the optimal dilutions or concentrations should be determined by the scientist.</p>	

Properties

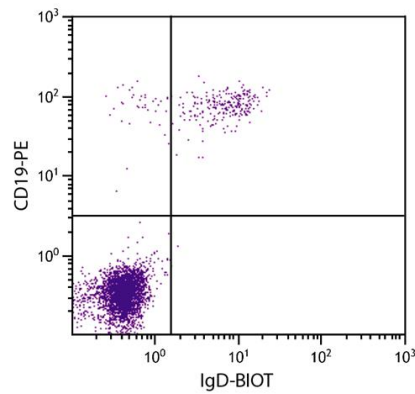
Form	Liquid
Buffer	PBS and 0.1% Sodium azide.
Preservative	0.1% Sodium azide
Concentration	0.5 mg/ml
Storage instruction	Aliquot and store in the dark at 2-8°C. Keep protected from prolonged exposure to light. Avoid repeated freeze/thaw cycles. Suggest spin the vial prior to opening. The antibody solution should be gently mixed before use.

Images



ARG21811 Mouse anti-Human IgD antibody [IADB6] (Biotin) ELISA image

ELISA: The plate was coated with purified Human IgD, IgG, IgM, and IgA. Immunoglobulins were detected with serially diluted ARG21811 Mouse anti-Human IgD antibody [IADB6] (Biotin) followed by [ARG23912](#) Streptavidin (HRP).



ARG21811 Mouse anti-Human IgD antibody [IADB6] (Biotin) FACS image

Flow Cytometry: Human peripheral blood lymphocytes stained with ARG21811 Mouse anti-Human IgD antibody [IADB6] (Biotin) and [ARG21260](#) anti-CD19 antibody [SJ25-C1] (PE) followed by Streptavidin (FITC).